

WORK ORDER No. 21 FOR PROFESSIONAL SERVICES

TO: Marlin Engineering Inc.
1700 NW 66 Avenue, Suite 106
Plantation, Florida 33313
(305) 477-7575

DATE: May 13, 2020

The City of Doral authorizes the firm of Marlin Engineering, Inc. to provide professional engineering services for the design of the Citywide Sidewalk Improvements Phase 2. Where Marlin Engineering, Inc. is a prequalified provider of professional engineering services selected in accordance with Consultant Competitive Negotiation Act (CCNA) requirements and approved by the City Council in November 2017 through Resolution 17-202. The work should be performed in accordance with the contract provisions contained in the Continuing Professional Services Agreement between Marlin Engineering, Inc. and the City of Doral dated February 2, 2018, and the attached Proposal dated March 10, 2020 submitted by your firm for the above referenced project.

SCOPE OF SERVICES AND SCHEDULE:

The scope of the project will be as described in the attached proposal from Marlin dated May 1, 2020. The scope includes the design of Phase 2 for the Citywide Sidewalk Improvement Project. The schedule requires the work to be performed within 7 months from NTP. All limitations of time set forth in this Work Order are of the essence. The performance of services associated with this Work Order will be executed on a time and materials basis with a not to exceed amount of \$122,071.00.

You are required by the Continuing Service Agreement to begin work subsequent to the execution of this Work Order, or as directed otherwise. If you fail to begin work subsequent to the execution of this Work Order, the City of Doral will be entitled to disqualify the Proposal and revoke the award.

Work Order incorporates the terms and conditions set forth in the Continuing Services Agreement dated February 2, 2018 between the parties as though fully set forth herein. In the event that any terms or conditions of this Work Order conflict with the Continuing Services Agreement, the provisions of this specific Work Order shall prevail and apply.

Work Order is not binding until the City of Doral agrees and approves this Work Order.

IN WITNESS WHEREOF, the parties hereto have executed this Agreement on the day and date first above written, in three (3) counterparts, each of which shall, without proof or accounting for the other counterpart be deemed an original Contract.

CONSULTANT: Marlin Engineering, Inc.

BY: [Signature]
NAME: Betsy Jeffers
TITLE: Vice President

WITNESSES:

1. [Signature]
2. [Signature]



OWNER: City of Doral
BY: [Signature]
NAME: Albert P. Childress
TITLE: City Manager

AUTHENTICATION:

BY: [Signature]
NAME: Connie Diaz
TITLE: City Clerk

APPROVED AS TO FORM AND LEGAL SUFFICIENCY FOR THE SOLE USE OF THE CITY OF DORAL:

BY: [Signature]
NAME: Luis Figueredo, ESQ.
TITLE: City Attorney

RESOLUTION No. 20-82

A RESOLUTION OF THE MAYOR AND THE CITY COUNCIL OF THE CITY OF DORAL, FLORIDA, APPROVING A WORK ORDER BETWEEN THE CITY OF DORAL AND MARLIN ENGINEERING, INC. FOR THE PROVISION OF DESIGN SERVICES AND THE DEVELOPMENT OF CONSTRUCTION PLANS FOR CITYWIDE SIDEWALK IMPROVEMENTS PHASE 2 IN AN AMOUNT NOT TO EXCEED \$122,071.00; RECOGNIZING THAT MARLIN ENGINEERING, INC. IS A CITY OF DORAL PRE-QUALIFIED VENDOR; AUTHORIZING THE CITY MANAGER TO EXECUTE THE WORK ORDER AND EXPEND BUDGETED FUNDS ON BEHALF OF THE CITY; AND PROVIDING FOR AN EFFECTIVE DATE

WHEREAS, in 2016, the City of Doral Public Works Department (PWD) submitted and presented an application for a Transportation Alternatives Program (TAP) Grant for a Citywide Sidewalk, Curb Ramp, and Crosswalks Improvements Phase 1 project; and

WHEREAS, The City of Doral was awarded a \$1 Million TAP Grant in Fiscal Year 2019 by the Florida Department of Transportation (FDOT) for the Citywide Sidewalk Improvement Phase 1 project; and

WHEREAS, construction of Phase 1 was completed in April 2020; and

WHEREAS, in 2018, the City of Doral Public Works Department (PWD) submitted and presented an application for a Transportation Alternatives Program (TAP) Grant for a Citywide Sidewalk, Curb Ramp, and Crosswalks Improvements Phase 2 project; and

WHEREAS, The City of Doral was awarded a \$1 Million TAP Grant in Fiscal Year 2020-21 by the Florida Department of Transportation (FDOT) for the Citywide Sidewalk Improvement Phase 2 project; and

WHEREAS, the City of Doral Public Works Department (PWD) recommends securing a firm for the provision of design services and the development of construction plans for the Citywide Sidewalk Improvements Phase 2; and

WHEREAS, Marlin Engineering, Inc. is a prequalified provider of professional engineering services selected in accordance with Consultant Competitive Negotiation Act (CCNA) requirements and approved by the City Council in December 2014; and

WHEREAS, the PWD requested a proposal from Marlin Engineering, Inc. for the provision of design services and the development of construction plans for the Citywide Sidewalk Improvements Phase 2; and

WHEREAS, Marlin Engineering submitted a proposal in an amount not to exceed \$122,071.00; and

WHEREAS, Staff respectfully requests that the Mayor and the City Council Members approve the Work Order with Marlin Engineering, Inc.; and

WHEREAS, the PWD respectfully requests authorization from the Mayor and the City Council Members to authorize the City Manager to expend available funds in the Public Works Transportation Fund, Account No. 101.80005.500650.

NOW, THEREFORE, BE IT RESOLVED BY THE CITY COUNCIL OF THE CITY OF DORAL AS FOLLOWS:

Section 1. Recitals. The above recitals are confirmed, adopted, and incorporated herein and made part hereof by this reference.

Section 2. Approval. The Work Order between the City of Doral and Marlin Engineering, Inc. for the provision of design services and the development of construction plans for the Citywide Sidewalk Improvements Phase 2; in an amount not to exceed \$122,071.00, a copy which is attached hereto as Exhibit "A", is hereby approved.

Section 3. Authorization. The City Manager is authorized to execute the Work Order and expend budgeted funds on behalf of the City in furtherance hereof.

Section 4. Implementation. The City Manager and the City Attorney are hereby authorized to take such further action as may be necessary to implement the purpose and the provisions of this Resolution.

Section 5. Effective Date. This Resolution shall take effect immediately upon adoption.

The foregoing Resolution was offered by Councilmember Mariaca who moved its adoption. The motion was seconded by Councilmember Cabral and upon being put to a vote, the vote was as follows:

Mayor Juan Carlos Bermudez	Yes
Vice Mayor Christi Fraga	Yes
Councilwoman Digna Cabral	Yes
Councilman Pete Cabrera	Yes
Councilwoman Claudia Mariaca	Yes

PASSED AND ADOPTED this 13 day of May, 2020.



JUAN CARLOS BERMUDEZ, MAYOR

ATTEST:



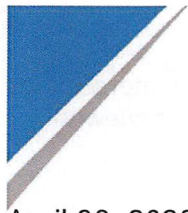
CONNIE DIAZ, MMC
CITY CLERK

APPROVED AS TO FORM AND LEGAL SUFFICIENCY
FOR THE USE AND RELIANCE OF THE CITY OF DORAL ONLY:



LUIS FIGUEREDO, ESQ.
CITY ATTORNEY

EXHIBIT "A"



April 30, 2020

Eugene Collings Bonfill, P.E., P.S.M., PMP
Public Works Department
City of Doral
8401 Northwest 53rd Terrace, 2nd Floor
Doral, FL 33166
eugene.collings@cityofdoral.com

Re: Professional Consulting Services for the Citywide Sidewalk Improvements Project

Dear Mr. Collings:

Per your request, we respectfully submit this proposal letter in accordance with the Local Agency Program requirements for the project of reference. Marlin Engineering, Inc. proposes to provide the services identified below pursuant to the Professional Services Agreement provided by the City of Doral (The City) for Engineering and Architectural services, dated Feb 2, 2015.

I. General

The project will consist of the new construction of sidewalk at the locations and limits specified below;

- NW 27th Street – From NW 107 Ave. to NW 109Ave. (North side only-the south side has sidewalk)
- NW 87 CT/NW 26 Street between NW 27 Street and NW 89 Ct.
- NW 89 Ct from NW 27 Street to NW 25 St
- NW 102 Ave: from NW 15 Terr – NW 25 St
- NW 84 Ave: from Train Tracks to NW 13 St

The sidewalk improvements shall be in accordance with the American with Disabilities Act (ADA).

The preparation of design drawings shall be in accordance with FDOT standards, preparation of specifications and bid quantities for the competitive bidding process and post design services.

II. Scope of Work

Task 1 – Pre-Design Services, Survey and Testing
a) Geotechnical Services

- (1) Double Ring Infiltrometer Testing for swale drainage
 - (2) Field Exfiltration Test for French Drains
-

(3) (Pavement Corings including a Milling and Resurfacing Recommendation at intersections with proposed crosswalks. The Milling and Resurfacing Recommendation to be reviewed and approved by the City)

- i. Field Investigation
- ii. Engineering, Technical Services and Report Preparation
- iii. Signed and Sealed Report to be Provided to the City of Miami Doral.

Geotechnical services shall be provided on an optional services basis.

- b) Survey
See attached scope.

Task 2 – Local Agency Program Documentation

To be done by the City of Doral

Task 3, and 4 – 60% and 100% Plans which will include the following activities;

- a) **(60% Submittal)** - Horizontal/Vertical Geometry Design – Establish the master design file for the horizontal and vertical geometry, drainage structure features, utilities (including conflict location identification and adjustments).
- b) **(60% Submittal)** - Drainage Analysis – Perform calculations and analysis to ensure that water quality and quantity requirements as stipulated by DERM and SFWMD are satisfied due to the additional impervious area.
- c) **(60, 100% Submittals)** - Traffic Control Analysis- Develop general notes for Maintenance of Traffic.
- d) **(60, 100% Submittals)** - Signing and Pavement Markings – Establish the master design file for signing and pavement markings.
- e) **(60, 100% Submittals)** - Calculation of quantities – Calculate quantities of construction items and tabulate.
- f) **(60, 100% Submittals)** - Construction cost estimate – Prepare a construction cost estimate for task 3 & 4 to be included in 60% and 100% percent submittal documents.
- g) **(60, 100% Submittals)** - Quality Control and Peer Review – Perform quality control and peer review of contract documents. If requested by the City of Doral, a copy of the marked up set of plans and/or specifications will be provided showing the consultant's QC review on each scheduled deliverable. The submittals shall include the name of the consultant staff that performed the QC review for each component.
- h) **(60, 100% Submittals)** - Prepare a complete contract set of plans including
 1. Key Sheet
 2. Tabulation of Quantities
 3. General Notes
 4. Plan Sheets/Sidewalk Details
 5. Traffic Control Notes
 6. Signing and Pavement Marking Sheets
 7. Special Detail Sheets – Drainage and ADA Ramps
- i) **(100% Submittal)** - Specification Package Preparation – Prepare specifications and bid documents for the project as required by the FDOT
- j) **(60, 100% Submittals)** - Utility Coordination – Coordinate with utility owners for facilities within project limits and certify clearance for construction.
- k) **(60, 100% Submittals)** – Coordinate tree removal/relocation with arborist contracted by the City.



- l) **(60, 100% Submittals)** - Marlin to provide interagency and permitting coordination between the City of Doral, Miami Dade County and the Florida Department of Transportation.
- m) The following two segments which are already significantly Design Complete will be completed and repackaged to be included in this Phase 2 construction.
 - a. NW 102 Ave: from NW 15 Terr – NW 25 St
 - b. NW 84 Ave: from Train Tracks to NW 13 St

III. Subconsultants

The below listed subconsultants will assist in the performance of the Work as an optional service.

Subconsultant Name	Specialty or Expertise
American Materials Testing Eng. LLC- Optional Services	Geotechnical Engineering
Smart-Sciences	Environmental Services

-Deliverable: Signed and Sealed Geotechnical Report.
Tree impact report.

IV. Schedule of Work

The anticipated length of service shall be twenty nine (29) weeks commencing after the Notice to Proceed. Consultant shall submit the Deliverables and perform the Work as depicted in the table below.

SCHEDULE OF DELIVERABLES			
Task or Activity ID#	Major Task, Sub-Task, Activity, or Deliverables	Duration	Delivery Date
	Survey to Designer (No S&S plans)	8 weeks	+8
	Final Submittal (60% Plans)	8 weeks	+16
	Review by the City, FDOT and Miami Dade	4 weeks	+20
	100% Plans and Specs	5 weeks	+25
	Review by FDOT-Production Complete	4 weeks	+29

V. Compensation

Consultant shall perform the work detailed in this Proposal for a Total fee of **\$122,071** The City shall not be liable for any fee, cost, expense or reimbursable expense or other compensation beyond this amount unless approved in a supplemental work order.



SUMMARY OF COMPENSATION			
Task or Activity ID #	Task Name and/or Activity Description	Fee Amount	Fee Basis
	Roadway, S&PM, Drainage, Utility Coord.	\$71,390.00	Time & Materials
	Surveying	\$25,656	Time & Materials
	SUE	\$9,000	Optional Services - Time & Materials
	Tree Impacts (Arborist Services)	\$15,025.00	Optional Services Time & Materials
	Geotechnical Investigation	\$1,000.00	Optional Services Time & Materials

VI. Additional Services

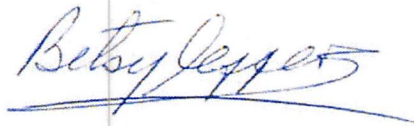
Additional services and unforeseen circumstances beyond established scope shall be negotiated in good faith and at the sole discretion of The City.

VII. Data Provided by the City

The following information or documents are to be provided by The City, if available: As-built information including survey and geotechnical information.

VIII. Project Manager

Consultant's Project Manager for this Project will be Aysel Freda, PE.



Submitted by:

Betsy Jeffers P.E., Vice President
Marlin Engineering, Inc

Reviewed and approval in concept recommended by:

Department Director

City Manager



Consultant Fee Proposal Worksheet

Consultant Name: Marlin Engineering, Inc.

Contract No.:

Date: 4/30/2020

Work Order No:

Project: City of Doral - LAP Citywide Sidewalk Improvements Project Phase 2

Project No.: Description:

STAFF CLASSIFICATION

Job Classification Assigned Staff Approved Rate	Project Manager Aysel Freda Rate: \$187.48		Senior Engineer Rafael Lagos Rate: \$160.00		Project Engineer R.Matamoros/Y.Anton Rate: \$146.16		CADD Technician Ricardo Angulo Rate: \$87.20		Clerical Chloe Kemble Rate: \$60.00		Rate:		Title Name Rate:		Staff Hours By Task	Salary Cost By Task	Average Rate Per Task
	Man hours	Cost/ Task	Man hours	Cost/ Task	Man hours	Cost/ Task	Man hours	Cost/ Task	Man hours	Cost/ Task	Man hours	Cost/ Task	Man hours	Cost/ Task			
1																	
2																	
3 Complete NW 102nd Ave and NW 84th Ave Plans	3	\$562			12	\$1,754	15	\$1,308							30	\$3,624	\$120.81
4																	
5 Horizontal/Vertical Master Design Files	7	\$1,312	18	\$2,880	85	\$12,424	80	\$6,976							190	\$23,592	\$124.17
6 Quantities/Cost Estimate	2	\$375	6	\$960	30	\$4,385	20	\$1,744							58	\$7,464	\$128.69
7 Field Reviews	4	\$750	4	\$640	8	\$1,169									16	\$2,559	\$159.95
9 Meetings/Coordination with Arborist	3	\$562	3	\$480	10	\$1,462									16	\$2,504	\$156.50
10 Key Sheet			1	\$160	5	\$731	3	\$262							9	\$1,152	\$128.04
11 Tabulation of Quantities			2	\$320	12	\$1,754	7	\$610							21	\$2,684	\$127.82
12 General Notes					6	\$877	2	\$174							8	\$1,051	\$131.42
13 Plan Sheets/Sidewalk Details	2	\$375	5	\$800	30	\$4,385	30	\$2,616							67	\$8,176	\$122.03
14 Traffic Control Analysis/Notes	1	\$187	4	\$640	8	\$1,169	8	\$698							21	\$2,694	\$128.30
15 Signing and Pavement Markings Analysis/Plan Sheet	2	\$375	1	\$160	16	\$2,339	24	\$2,093							43	\$4,966	\$115.50
16 Special Detail Sheets-Drainage and ADA Ramps			1	\$160	5	\$731	2	\$174							8	\$1,065	\$133.15
17 Specifications					20	\$2,923									20	\$2,923	\$146.16
18 Design of Swales	N/A																
19 Design of Swales	N/A																
20 Design of Storm Drains	N/A																
21 Optional Culvert Material	N/A																
22 French Drain Systems	N/A																
23 Drainage Technical Memo and Calcs - DERM Perm	N/A																
24 Structural Detail - Retaining Walls																	
25 Utility Coordination			8	\$1,280	16	\$2,339	16	\$1,395							40	\$5,014	\$125.34
26 Quality Assurance/Quality Control			12	\$1,920											12	\$1,920	\$160.00
27 Post Design Hours	N/A																
Total Staff Hours	24		65		263		207								559		
Total Staff Cost		\$4,499.52		\$10,400.00		\$38,440.08		\$18,050.40								\$71,390.00	\$127.71

Total % of Work by Position

4.3%

11.6%

47.0%

37.0%

Note: Fee for the Principal(s) of the firm are not to be included above as the multiplier is not applicable to their hours. The fee is to be shown below and entered as a separate

Estimate of Principal's Fee
 Total hours \$400.00 / hour = \$ -

Notes:

- This sheet is to be used by Prime Consultant to calculate the Grand Total Fee and one is to be used for each Subconsultant
- Manually enter fee from each subconsultant. Unused subconsultant rows may be hidden
- Where applicable the basis for work activity descriptions shall be the FICE/FDOT Standard Scope and Staff Hour Estimation Handbook.
- Enter the multiplier value in the field after the word "multiplier" Maximum of 2 decimal points.

1 - SUBTOTAL ESTIMATED FEE:	multiplier 1.00	\$71,390.00
additional Services (Allo Marlin - Survey		\$25,656.00
Subconsultant: AMT - Geotechnical - Optional Services		\$1,000.00
Subconsultant: Smart Sciences		\$15,025.00
Subconsultant: Marlin - SUE (Optional Services		\$9,000.00
Principal's Fee Ramon Soria		\$ -
2 - SUBTOTAL ESTIMATED FEE:		\$122,071.00
Geotechnical Field/Lab Testing:		
Survey Fee (or Survey Crew Fee):		
Other Misc. Fee: Enter Fee Description		
3 - SUBTOTAL ESTIMATED FEE:		\$122,071.00
Additional Services (Allowance)		
Reimbursables (Allowance)		
GRAND TOTAL ESTIMATED FEE:		\$122,071.00

April 29th, 2020

City of Doral
8401 N.W. 53 Terr.
Doral, FL. 33166

**Re: Doral Sidewalk Survey
Along N.W. 26th Street
From: NW 89 Court To: NW 27 Street**

PROPOSED SCOPE OF SERVICES:

As per your request, Marlin Engineering Inc. will provide the following Surveying Services, linked to the above captioned project:

Survey Services:

- Provide Topographic Survey & Digital Terrain Model (DTM) Along N.W. 26th Street along N.W. 87th Ct to 5 feet past of the Right of Way lines on both side of the street. Limits of Survey is from NW 89 Ct to NW 27 Street, see site limits on Sheet 3 of 3 (+/- 2,000 LF).
- Provide cross Sections at 100 feet intervals.
- Set a Minimum of Two (2) Site Benchmarks onsite.
- Locate all above ground utilities within site limits.
- Calculate Right of Way lines, adjacent lot/parcel line and represent on the survey.

Subsurface Utility Engineering (S.U.E.):

- Provide Ten (10) Soft Digs in order to locate existing Utilities. Location of soft Digs will be provided by the client.

Not included within our scope:

- Layout of Right of way lines.
- Drainage As-Builts.
- Sewer As-Builts.
- Locate any underground Utilities.
- Tree Identification, Canopy & Size.

SPECIFICATIONS:

All field data with the exception of electronic data will be recorded in field books.

Additions or modifications to the scope, as well as resulting CAD and Project Management time, will be invoiced per hourly fees listed below.

QUALIFICATIONS:

- 1- All Procedures in connection with this project will be performed in strict accordance with the with the most current "Standards of Practice" set forth by the Florida Board of Professional Surveyors and Mappers in Chapter 5J-17, Florida Administrative Code, pursuant to Section 472.027, Florida Statutes.
- 2- This estimate is based on information provided by City of Doral.
- 3- This estimate is a **Lump Sum Amount** price payment.

ESTIMATED FEE:

Our estimated fee to perform the services as requested by the City of Doral shall be a Lump Sum Amount of **\$16,080.00**. As always, Marlin Engineering Inc. is prepared to commence upon receipt of your written Task Work Order.

Field:

2 Man Survey Crew	\$1016.00/day	Estimated 5 days	\$ 5,080.00
-------------------	---------------	------------------	-------------

S.U.E.

4 Man S.U.E. Crew	\$450/Hole	Estimated 10 holes	\$ 4,500.00
-------------------	------------	--------------------	-------------

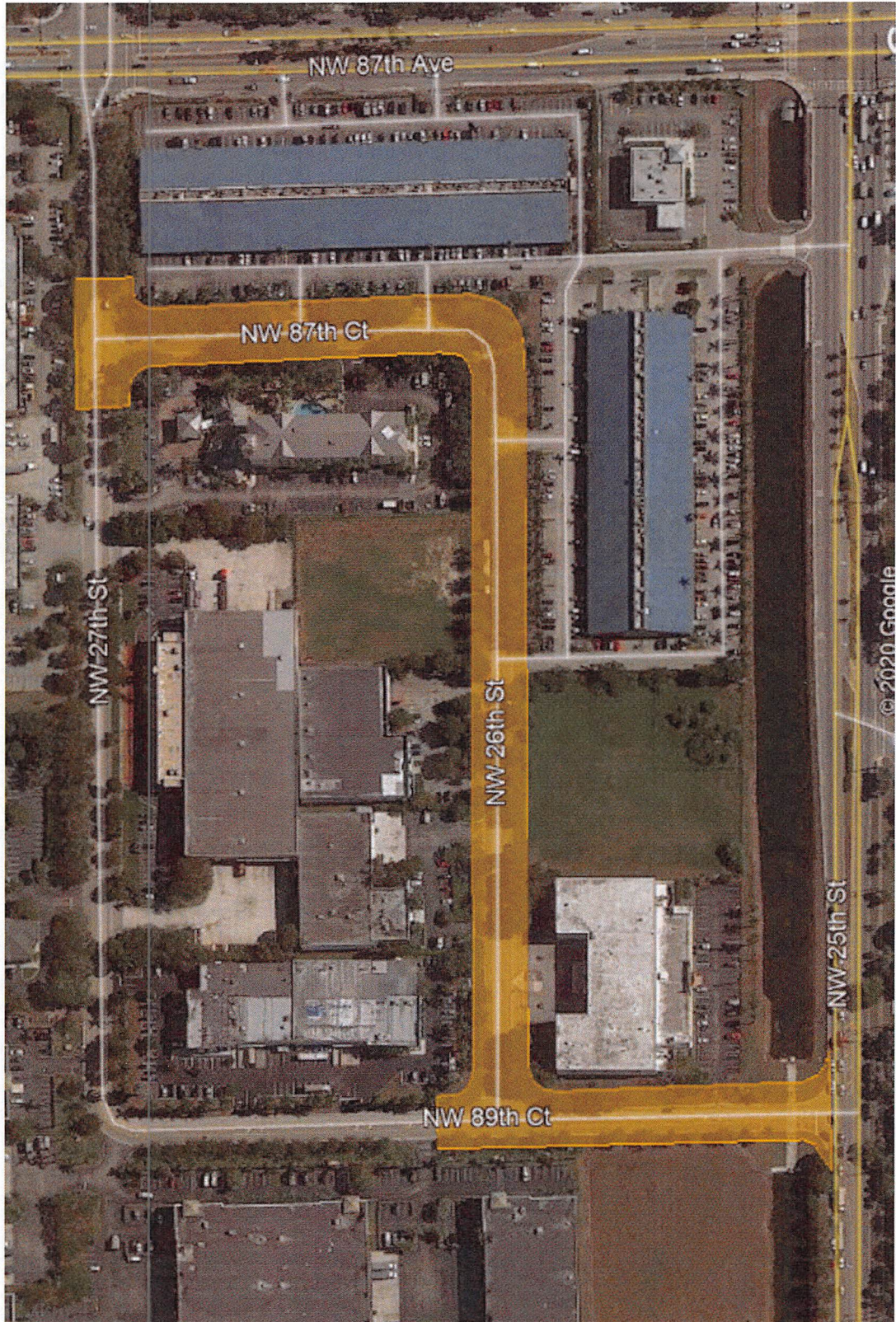
Office:

Project Surveyor	\$175.00/hr.	Estimated 4 hours	\$ 700.00
CADD Technician	\$100.00/hr.	Estimated 24 hours	\$ 2,400.00
Survey Technician	\$85.00/hr.	Estimated 40 hours	\$ 3,400.00

Total:			<u>\$16,080.00</u>
--------	--	--	--------------------

Note: Depending of the location of the Ten (10) required S.U.E., MOT & PERMIT charges are not included within this proposal. If an MOT/Permit is required, a change orders will be issued to cover the cost.

Sincerely,
Marlin Engineering, Inc.
Omar S. Carcamo
Survey Manager



April 29th, 2020

City of Doral
8401 N.W. 53 Terr.
Doral, FL. 33166

**Re: Doral Sidewalk Survey
Along N.W. 27th Street
From: NW 107 Avenue To: NW 109 Avenue**

PROPOSED SCOPE OF SERVICES:

As per your request, Marlin Engineering Inc. will provide the following Surveying Services, linked to the above captioned project:

Survey Services:

- Provide Topographic Survey & Digital Terrain Model (DTM) Along the Center line of N.W. 27th Street to 5 feet North of the North Right of Way line. Limits of Survey is from NW 107 Avenue to NW 109 Avenue, see site limits on Sheet 3 of 3 (+/- 1,600 LF).
- Provide cross Sections at 100 feet intervals.
- Set a Minimum of Two (2) Site Benchmarks onsite.
- Locate all above ground utilities within site limits.
- Calculate Right of Way lines, adjacent lot/parcel line and represent on the survey.

Subsurface Utility Engineering (S.U.E.):

- Provide Ten (10) Soft Digs in order to locate existing Utilities. Location of soft Digs will be provided by the client.

Not included within our scope:

- Layout of Right of way lines.
- Drainage As-Builts.
- Sewer As-Builts.
- Locate any underground Utilities.
- Tree Identification, Canopy & Size.

SPECIFICATIONS:

All field data with the exception of electronic data will be recorded in field books.

Additions or modifications to the scope, as well as resulting CAD and Project Management time, will be invoiced per hourly fees listed below.

QUALIFICATIONS:

- 1- All Procedures in connection with this project will be performed in strict accordance with the with the most current "Standards of Practice" set forth by the Florida Board of Professional Surveyors and Mappers in Chapter 5J-17, Florida Administrative Code, pursuant to Section 472.027, Florida Statutes.
- 2- This estimate is based on information provided by City of Doral.
- 3- This estimate is a **Lump Sum Amount** price payment.

ESTIMATED FEE:

Our estimated fee to perform the services as requested by the City of Doral shall be a Lump Sum Amount of **\$18,576.00**. As always, Marlin Engineering Inc. is prepared to commence upon receipt of your written Task Work Order.

Field:

2 Man Survey Crew	\$1016.00/day	Estimated 6 days	\$ 6,096.00
-------------------	---------------	------------------	-------------

S.U.E.

4 Man S.U.E. Crew	\$450/Hole	Estimated 10 holes	\$ 4,500.00
-------------------	------------	--------------------	-------------

Office:

Project Surveyor	\$175.00/hr.	Estimated 4 hours	\$ 700.00
CADD Technician	\$100.00/hr.	Estimated 32 hours	\$ 3,200.00
Survey Technician	\$85.00/hr.	Estimated 48 hours	\$ 4,080.00

Total:			<u>\$18,576.00</u>
--------	--	--	--------------------

Note: Depending of the location of the Ten (10) required S.U.E., MOT & PERMIT charges are not included within this proposal. If an MOT/Permit is required, a change orders will be issued to cover the cost.

ACCEPTANCE:

The return of an executed copy of this proposal constitutes authorization to proceed. Marlin Engineering Inc. appreciates the opportunity to submit this proposal and we look forward to being of service. If you have any questions with respect to this proposal, do not hesitate to contact us. On behalf of MARLIN ENGINEERING Inc, I thank you again, for the opportunity to work with you on this important project.

APPROVED BY:

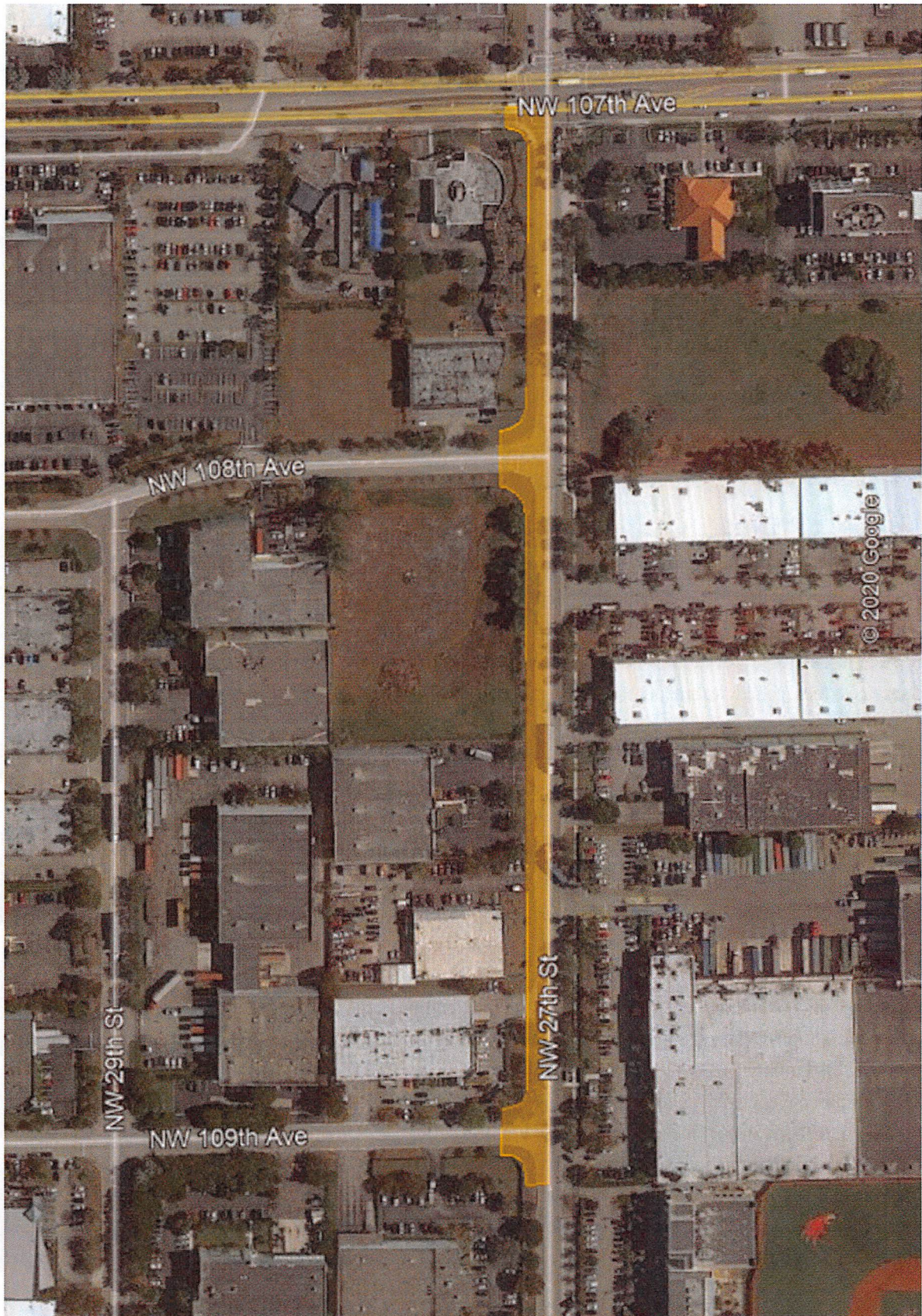
The above agreement is hereby acknowledged and Marlin Engineering, Inc. is authorized to proceed with the above requested services.

DATE: _____
CLIENT

4 / 29 / 2020

DATE: _____
MARLIN ENGINEERING INC.

Sincerely,
Marlin Engineering, Inc.
Omar S. Carcamo
Survey Manager





April 29, 2020

Jose Santiago
Marlin Engineering
15600 SW 288th Street, Suite 208
Miami, Florida 33033

**Subject: Tree Consulting Services and Florida Bonneted Bat Roost Survey
City of Doral - Citywide Sidewalk Improvements Phase 2
Four Roadway Segments (± 12,000 linear feet, includes both sides)
City of Doral, Miami-Dade County, Florida
Smart-Sciences Proposal No. 154-005-P**

Dear Mr. Santiago:

Smart-Sciences, Inc. (Smart-Sciences) is pleased to submit this proposal to Marlin Engineering (Client) for a combined Tree Consulting Services and Roost survey for the Florida bonneted bat (*Eumops floridanus*, FBB), a species listed under the Endangered Species Act (ESA, 1973), for the four roadway segments totaling approximately 12,001 linear feet (Site) in the City of Doral, Miami-Dade County, Florida. Included in the proposal is a summary of germane project information as understood by Smart-Sciences, the proposed scope of services, fees, schedule, and authorization procedures.

Background Information

The Site consists of four roadway segments within the City of Doral located at (1) NW 102 Ave. from NW 15th Terrace to NW 25th Street; (2) NW 84 Ave. from NW 13th Terrace to railroad crossing; (3) NW 27th Street from NW 107 Ave. to NW 112 Ave; and (4) NW 87 CT/NW 26 Street between NW 27 Street and NW 89 Ct. These roadway segments total approximately 12,001 linear feet, including both sides of road where applicable.

It is our understanding the Client is providing engineering services for the proposed sidewalk construction/improvements along these roadway segments and needs to have a tree removal permit completed on behalf of the City of Doral through Miami-Dade County (MDC) Regulatory and Economic Resources (RER). Smart-Sciences has yet to receive full site plans with trees marked for removal, however we have prepared our Scope of Services and costs based on trees found on Google Earth aerial imagery. Along with the tree permitting process, a roost survey for the FBB will be conducted simultaneously in accordance with U.S. Fish and Wildlife Service (USFWS) Florida Bonneted Bat Consultation Guidelines (October 2019). This federal listing is recognized by State of Florida Fish and Wildlife Conservation Commission (FWC) and Miami-Dade County (MDC) Comprehensive Development Master Plan (Chapter IV CON-9A, B, C). The

Site is located within the U.S. Fish and Wildlife Service (USFWS) South Florida Urban Bat Area.

Scope of Services

It is our understanding that we will conduct a tree inventory and FBB roost survey for the trees along each proposed sidewalk improvements segment on all four roadway segments. Smart-Sciences has yet to receive full site plans with trees marked for removal, therefore the number of trees to be inventoried and inspected is based off of Google Earth aerial imagery. We will also prepare and submit the Miami-Dade County Tree Removal Permitting application, conduct field verification visits with MDC staff, provide tree mitigation calculations, and submit a technical memo discussing our roost survey findings. If site plans with trees marked for removal are acquired, Smart-Sciences can provide an updated proposal accordingly. Based on our current understanding of the project, Smart-Sciences is proposing the following scope of services:

Task 1 – Tree Inventory

Smart-Sciences will evaluate the trees within proximity of the proposed sidewalk improvements, documenting species, height, diameter at breast height, canopy coverage and ranked health condition (1 - 10). Smart-Sciences will number the trees, leaving a numbered marker on each tree, where needed. We will apply International Society of Arboriculture standards of practice to all measurements. A tree inventory table presenting relevant information on trees will be prepared. If specimen trees are identified photographs will be collected, with a focus on any visible sign demonstrating compromised condition of the tree if present.

Based on Google Earth we estimate the following number of trees per corridor:

1. NW 102 Ave. from NW 15th Terrace to NW 25th Street – Approximately 100 trees
2. NW 84 Ave. from NW 13th Terrace to railroad crossing – Approximately 50 trees
3. NW 27th Street from NW 107 Ave. to NW 112 Ave. – Approximately 60 trees
4. NW 87 CT/NW 26 Street between NW 27 Street and NW 89 Ct. – Approximately 50 trees

Task 2 – FBB Roost Survey and Technical Memo

An FBB roost survey will be conducted in accordance the USFWS Florida Bonneted Bat Consultation Guidelines (October 2019). This survey will be conducted concurrently with the tree inventory (Task 1) and will evaluate roosting potential by conducting a roost survey of the trees along proposed sidewalk improvements. This effort will include reviewing tree cavities for use by FBB as roosting or resting areas. Smart-Sciences' biologists will inspect cavities or crevices for claw marks, hair, guano, or other signs of use. As appropriate, cavities will be inspected visually with a micro video camera mounted on an extendable rod or by direct sight inspection using binoculars. Cavities above 25 feet of elevation are out of reach of the surveying equipment, and if observed cavities above this height cannot be inspected in its entirety (binoculars may not be sufficient), a supplemental acoustic survey may become necessary to assess if FBB are roosting in this tree.

Task 2 includes the preparation of a technical memo for submittal to the Client. The memo will discuss our findings from the roost survey activities, including dimensions and color photographs of the trees inspected, and provide a discussion of FBB roosting potential within and directly adjacent to the Site. Please note that this Technical Memo will not meet the USFWS requirements for a Biological Assessment. If FBB are identified to be roosting within or directly adjacent to the Site, ESA Section 7(a)(2) Consultation would be required. If observed cavities/crevices could not be inspected in its entirety due to height and/or location, a supplemental acoustic survey may be needed to determine if FBB are roosting in trees proposed for removal. Additionally, ESA Section 7(a)(2) Consultation may be required. Such consultation efforts are beyond the scope of this proposal; but can be provided, as we routinely coordinate with USFWS on issues of FBB.

Task 3 – Preparation and Submittal of MDC Tree Removal Permit

Smart-Sciences will prepare and submit the MDC Tree Removal Permit. We will need to be provided landscape plans prepared by others. It is our understanding all trees are proposed for removal. Removal of existing trees will require mitigation. The specifics of canopy replacement and tree replacement depend upon a tree's size, species, native classification, and other considerations. Smart-Sciences will provide tree mitigation calculations for those trees proposed to be removed. *If relocating of trees is proposed, this would require a Tree Relocation Plan which is not included in this proposal. Additionally, if there are specimen trees that MDC wishes to remain, an Avoidance and Minimization Plan may become required which is not included in this proposal. Smart-Sciences can provide a proposal for these services upon request, if deemed necessary.*

Task 4 – Field Visits with MDC Staff

Miami-Dade County staff will perform a field visit to verify tree measurements and conditions as part of the tree permitting process. Smart-Sciences can accompany MDC staff in the field should the Client want us to do so. We have included up to 12 hours for conducting site visits with MDC staff.

Cost of Services

Smart-Sciences proposes performing Tasks 1 and 2 for a lump sum fee of **\$11,700.00**. The lump sum fee for Task 3 is **\$2,125.00**. Should the Client request us to perform Task 4, the time and material fee will be **\$1,200.00**. *If site plans with trees marked for removal are acquired and effort required increases or decreases significantly, Smart-Sciences will provide an updated proposal.*

If unforeseen conditions should require services beyond the scope of services described herein, Smart-Sciences will notify you immediately of additional costs necessary to complete the project, prior to proceeding. Services beyond those described herein will be invoiced in accordance with the City of Doral, Continuing Professional Services fee schedule. Please note that payment of invoices is due upon receipt.

Deliverables will be provided electronically. If hard copy reports are required, production will be billed at cost times 1.15.

Authorization

If the above scope of services and fees are acceptable, please issue a Work Order for execution.

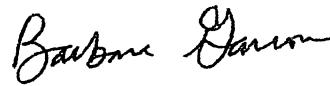
We appreciate the opportunity to offer our professional services on this project. If you have any questions concerning this proposal, please contact us at the office 786-313-3977.

Sincerely,

SMART-SCIENCES, INC.



Gisele L. Colbert, M.S.
Principal Scientist



Barbara Garrow
Staff Scientist