

RESOLUTION No. 21-188

A RESOLUTION OF THE MAYOR AND THE CITY COUNCIL OF THE CITY OF DORAL, FLORIDA, SITTING AS THE LOCAL PLANNING AGENCY, RECOMMENDING GOING FORWARD WITHOUT A RECOMMENDATION TO THE LOCAL GOVERNING BODY THE ADOPTION OF THE ANNUAL UPDATE TO THE CAPITAL IMPROVEMENTS ELEMENT (CIE) OF THE CITY'S COMPREHENSIVE PLAN FOR 2021 AND THE FIVE-YEAR SCHEDULE OF CAPITAL IMPROVEMENTS FOR FISCAL YEARS 2021/2022 – 2025/2026, PURSUANT TO SECTION 163.3177(3)(B), FLORIDA STATUTES; AND PROVIDING FOR AN EFFECTIVE DATE

WHEREAS, pursuant to Section 163.3177(3)(b), Florida Statutes, local governments are required to undertake an annual review of the Capital Improvements Element of the City's Comprehensive Plan to update the Five-Year Schedule of Capital Improvements; and

WHEREAS, the Five-Year Schedule of Capital Improvements must be reviewed annually by the City to reflect the timing, location and funding of capital projects to achieve and maintain adopted level of service standards for public facilities that are necessary to implement the comprehensive plan; and

WHEREAS, the Planning and Zoning Department is submitting the annual update to the Capital Improvements Element (CIE) of the City's Comprehensive Plan for 2021 and the Five-Year Schedule of Capital Improvements for Fiscal Years 2021/2022 – 2025/2026 which identifies the City's capital projects necessary to implement the Comprehensive Plan and to ensure that the adopted level of service standards for public facilities are being achieved and maintained for the subsequent five-year planning period; and

WHEREAS, on August 25, 2021, the City Council of the City of Doral sitting as the Local Planning Agency (LPA) at a properly advertised hearing received testimony and

evidence related to the proposed text amendment to the City's Land Development Code as required by state law and local ordinances.

NOW THEREFORE, BE IT RESOLVED BY THE MAYOR AND THE CITY COUNCIL OF THE CITY OF DORAL, FLORIDA SITTING AS THE LOCAL PLANNING AGENCY THAT:

Section 1. Recitals. The foregoing recitals are confirmed, adopted, and incorporated herein and made as part hereof by this reference.

Section 2. Adoption of the Capital Improvements Element Update. The LPA hereby recommends going forward without a recommendation to the local governing body (City Council) to consider the adoption of the annual update to the Capital Improvements Element (CIE) of the City's Comprehensive Plan for 2021 and the Five-Year Schedule of Capital Improvements for Fiscal Years 2021/2022 – 2025/2026, pursuant to section 163.3177(3)(b), Florida Statutes. A copy of the 2021 Capital Improvements Element update and the Five-Year Schedule of Capital Improvements for Fiscal Years 2021/2022 – 2025/2026 is provided in "Exhibit A."

Section 3. Effective Date. This Resolution shall become effective immediately upon its adoption by the Local Planning Agency.

The foregoing Resolution was offered by Vice Mayor Cabrera who moved its adoption. The motion was seconded by Councilmember Mariaca and upon being put to a vote, the vote was as follows:

Mayor Juan Carlos Bermudez	Yes
Vice Mayor Pete Cabrera	Yes
Councilwoman Digna Cabral	Yes
Councilwoman Claudia Mariaca	Yes
Councilman Oscar Puig-Corve	Absent/Excused

TRANSMITTED WITHOUT A RECOMMENDATION TO THE LOCAL GOVERNING BODY (CITY COUNCIL) THIS 25 DAY OF AUGUST, 2021.



JUAN CARLOS BERMUDEZ, MAYOR

ATTEST:



CONNIE DIAZ, MMC
CITY CLERK

APPROVED AS TO FORM AND LEGAL SUFFICIENCY
FOR THE USE AND RELIANCE OF THE CITY OF DORAL ONLY:



LUIS FIGUEREDO, ESQ.
CITY ATTORNEY

EXHIBIT “A”



CITY OF DORAL COMPREHENSIVE PLAN



2021 CAPITAL IMPROVEMENTS ELEMENT UPDATE

AUGUST 12, 2021

DORAL COMPREHENSIVE PLAN CAPITAL IMPROVEMENTS ELEMENT UPDATE

August 12, 2021

Table of Contents

INTRODUCTION.....	3
I. Population Estimates and Projections	4
II. Level-of-Service Analysis	5
A. Transportation	5
1. Roadways.....	5
2. Intersections	9
3. Transit.....	11
4. Bicycle/Pedestrian Facilities	12
5. De Minimus Impact Report	14
6. 5-Year Level-of-Service Transportation Projects	14
B. Potable Water Service.....	16
1. 5-Year Level-of-Service Water Projects.....	20
C. Sanitary Sewer Facilities	21
1. 5-Year Level-of-Service Wastewater Projects	21
D. Stormwater Management	21
1. 5-Year Level-of-Service Stormwater Projects.....	26
E. Solid Waste	26
1. 5-Year Level-of-Service Solid Waste Projects.....	27
F. Parks and Recreation	27
1. 5-Year Level-of-Service Projects	28
2. Long Term Planning.....	30
G. Education Facilities	31
1. 5-Year Capacity Projects in Doral	32
2. Charter and Private Schools	31
III. CAPITAL IMPROVEMENTS	34

Figures

Figure 1: 2018 Level-of-Service Roadway Conditions.....	7
Figure 2: 2025 Projected Roadway Level-of-Service.....	8
Figure 3: Transit Routes in Doral.....	12
Figure 4: Doral’s Existing and Planned Bikeway Network.....	13
Figure 5: Existing WASD Water Treatment Plants.....	17
Figure 6: Doral Canal System.....	23
Figure 7: Prioritized Drainage Sub-Basins	24
Figure 8: Doral’s Park System (2021)	29

Tables

Table 1: Population Estimates and Projections	4
Table 2: Existing Intersection Conditions LOS Summary	9
Table 3: Existing Intersection Traffic with Mitigation LOS Summary.....	10
Table 4: City Transportation Projects FY 2022-2026.....	14
Table 5: Planned State and County Transportation Projects in Doral Area FY 2022-2026.....	15
Table 6: City of Doral Water Usage Projections	Error! Bookmark not defined. 18
Table 7: City Stormwater Projects and Estimated Costs FY 2022-2026.....	26
Table 8: Solid Waste Generation 2015-2030	27
Table 9: Projected Parks Level-of-Service Acreage Needs.....	28
Table 10: Planned Parks Projects FY 2022-2026	30
Table 11: Public School Capacity and Enrollment.....	31
Table 12: Enrollment and Capacity for Charter Schools in Doral.....	32
Table 13: Projected Revenues for Capacity-Related Projects by Funding Source	33
Table 14: Projected 5-Year Expenditures for Capital Improvements by Type.....	33
Table 15: Doral’s Schedule of Capital Improvements 2021/22 - 2025/26.....	34

INTRODUCTION

This document annually updates the Capital Improvements Element (CIE) of the City of Doral Comprehensive Plan. Pursuant to Subsection 163.3177(3)(b)1, Florida Statutes, local governments are required to review and update the CIE on an annual basis and modify as necessary to maintain a financially feasible 5-Year Schedule of Capital Improvements (SCI).

The 2022 CIE Update includes all capital projects for which the City has fiscal responsibility, including parks and recreation, stormwater management and transportation. The Update also includes capital improvement projects which are the responsibility of other government agencies and entities, including water supply, sanitary sewer, solid waste, public school facilities and transportation facilities. These “non-Doral” projects are funded through Miami-Dade County, Miami-Dade Public School Board, Miami-Dade Transportation Planning Organization (TPO).

This Update also provides Level of Service (LOS) analyses for all public facilities within the City based on population projections and related data. Projects included in the updated 5-Year SCI are necessary to address projected public facility needs in order to meet future LOS demand. The CIE coordinates infrastructure to be consistent throughout the elements of the Comprehensive Plan. This document is approved and adopted annually by the City Council. Once adopted, this document replaces, amends and updates the City of Doral CIE Element of the City’s adopted Comprehensive Plan. The 2021/22 - 2025/26 SCI herein will replace the 2020/21 SCI and updated data, inventory and analysis (DIA) will replace the 2020/21 DIA.

Space Left Blank Intentionally

I. Population Estimates and Projections

Population projections are the foundation upon which to forecast future demand on public facilities and services. In developing Doral’s population projections for this CIE update, various demographic sources including population estimates derived from the University of Florida Bureau of Economic and Business Research (BEBR), the U.S. Census, other county and regional planning documents, and city approved unbuilt units are reviewed and analyzed.

Table 1 below shows the historical, current and future estimates projections of Doral’s population through the year 2040.

Table 1: Population Estimates and Projections

YEAR	POPULATION
Historic Population	
2000	20,438
2010	45,709
2020	71,746
Current and Projected Population	
2021	79,702
2022	82,342
2023	84,047
2024	85,753
2025	91,775
2026	93,152
2030	98,868
2035	112,115
2040	120,779

Sources: U.S. Census and University of Florida BEBR 2020; City Staff 2021.

The population levels in Table 1 above are utilized as the City’s current population projections for this CIE update to determine the City’s public facility needs during the 5-year planning period from 2021/22 to 2025/26. City staff has calculated there are 6,389 dwelling units approved in site plans by the City but unbuilt as of July 2021 which provides an estimated future population capacity of 21,083 using the average Doral household size from the U.S. Census (3.3 persons/household). Combining these unbuilt dwelling units with other historical data shows that Doral can sufficiently accommodate future growth through 2026 and thru the projected time period of 2040.

Space Left Blank Intentionally

II. Level-of-Service Analysis

A. Transportation

There are approximately 259 lane miles of roads within Doral maintained by three (3) separate government jurisdictions: City of Doral, Miami-Dade County and the State of Florida. Each jurisdiction provides routine maintenance of their roadways. However, all roadway traffic control such as speed limit signs, stop signs and traffic signals fall under the jurisdiction of, and are maintained by, Miami-Dade County. Doral maintains approximately 75 miles of roadway. Over the years, the city has taken over maintenance jurisdiction for many public roads and streets in Doral through inter-local agreements with Miami-Dade County. The expressways surrounding Doral on three (3) sides are: State Road 826/Palmetto Expressway along the eastern border (Florida Department of Transportation), State Road 836/Dolphin Expressway along the southern border (Greater Miami Expressway Authority), and State Road 821/Homestead Extension of the Florida Turnpike (HEFT) along the western border (Florida Turnpike Enterprise).

The City completed the most recent update of its Transportation Master Plan (TMP) in 2017. The TMP is a long-range 20-year plan that guides Doral's mobility improvements within the City and with regional destinations. The 2017 TMP inventoried and analyzed Level of Service (LOS) for existing roadways and projected future roadway LOS in the years 2025 and 2040. The plan addresses transit, bikeway and pedestrian facilities and their traffic relief. The Plan identifies and prioritizes projects needed to address current and future transportation deficiencies, and methods for financing transportation improvements and mitigation necessary to maintain adopted LOS standards.

1. Roadways

Adopted Level of Service (LOS) standards for roadway facilities are contained in Policies 2.2.1, 2.2.2 and 2.2.3 of the Transportation Element of the City's Comprehensive Plan. Local roadways have an adopted LOS standard of "D" except where specialized transit service exists, the LOS threshold is increased to "D + 120%". State roadways have an adopted LOS standard of "E". The LOS analysis contained in this CIE update is based on 2018 traffic counts from the *City of Doral Biennial Traffic Monitoring Report* (dated October 16, 2018).

This section of the report addresses the performance of Doral's roadway system. Roadway vehicular counts were undertaken at various locations within the City. Using this data, LOS were calculated for each associated roadway segment on an Annual Average Daily Traffic (AADT), Peak Hour, Peak Directional and Peak Hour Bi-directional basis. Traffic conditions were projected to 2025 using a combination of TPO and local growth factors, derived from an understanding of existing and planned future developments. This provides an assessment of future conditions to determine project priorities. Existing LOS conditions have been analyzed and the results are displayed in Table 2. This serves as a handbook to detail the condition of each facility in the City. Categories of data include:

- * Specific Link
- * Number of Lanes

- * Existence of a Median
- * Road Jurisdiction
- * Functional Classification
- * Number of Traffic Signals
- * Segment Length
- * Signals per Mile
- * Speed Limit
- * Roadway Class
- * Existing Level of Service Standard
- * Service Volume at LOS C, D, E
- * Average Annual Daily Traffic (AADT)
- * Peak Hour Volume
- * Remaining Capacity
- * Transit Service
- * Sidewalks
- * Bike Lanes

Figure 1 shows the Level-of-Service (LOS) on the primary Doral roads in 2018. Roadways with average daily traffic flows exhibiting LOS “F” in 2018 were:

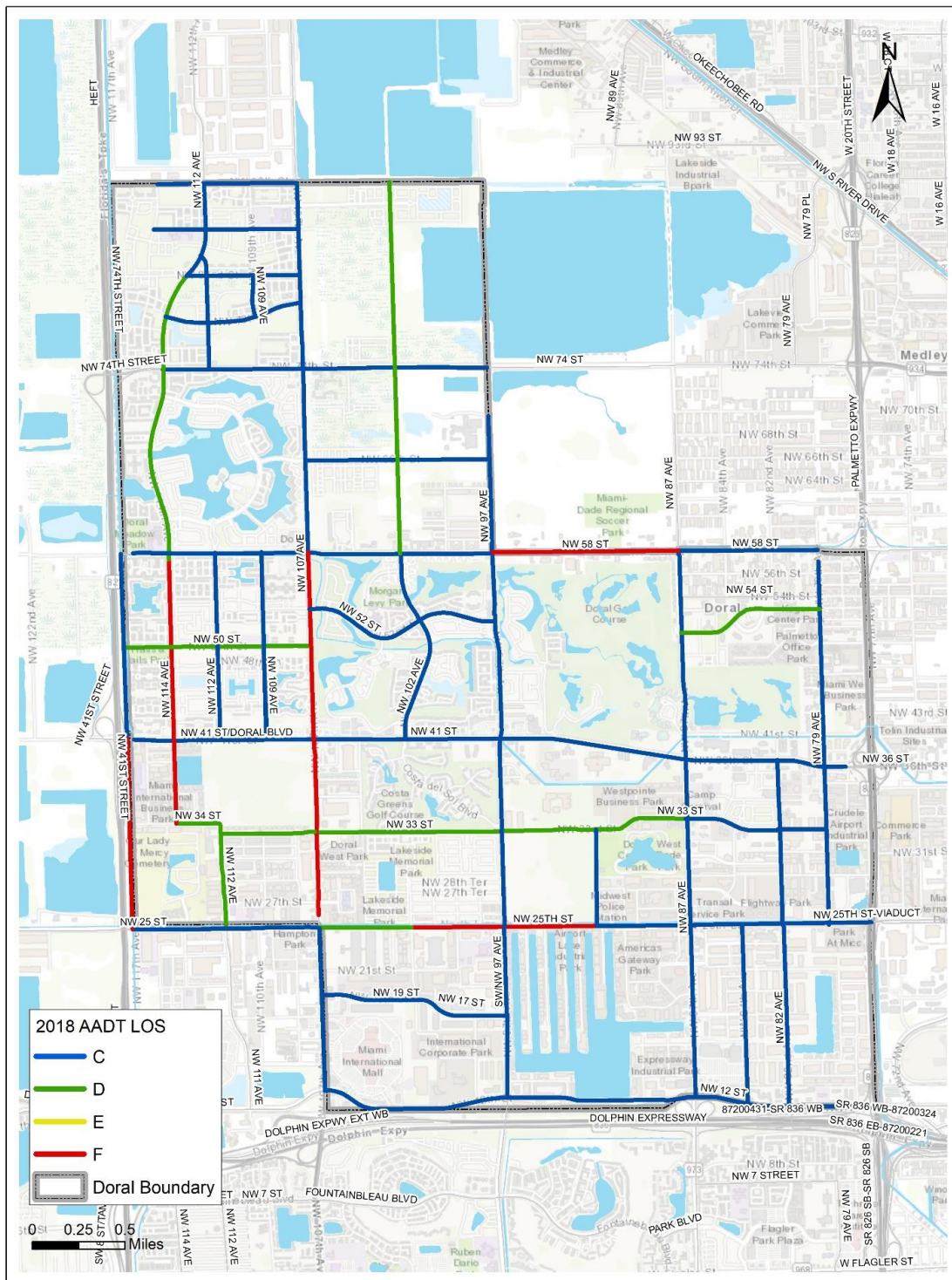
1. NW 58th Street - NW 87th Avenue to NW 97th Avenue
2. NW 25th Street - NW 92nd Avenue to NW 102nd Avenue
3. NW 107th Avenue - NW 25th Street to NW 58th Street
4. NW 114th Avenue – NW 34th Street to NW 58th Street
5. NW 117th Avenue – NW 25th Street to NW 41st Street

Figure 2 presents the projected Level-of-Service on the City’s primary road system in 2025. Roadways with average daily traffic flows exhibiting LOS “F” in 2025 are projected to be:

1. NW 107th Avenue - NW 25th Street to NW 41st Street
2. NW 97th Avenue – NW 12th Street to NW 17th Street
3. NW 112th Avenue – NW 25th Street to NW 34th Street
4. NW 114th Avenue – NW 34th Street to NW 58th Street
5. NW 117th Avenue – NW 25th Street to NW 41st Street
6. NW 25th Street - NW 92nd Avenue to NW 117th Avenue
7. NW 36/41st Street – Palmetto Expressway to NW 107th Avenue
8. NW 34th Street – NW 112th Avenue to NW 114th Avenue
9. NW 74th Street – NW 97th Avenue to NW 107th Avenue

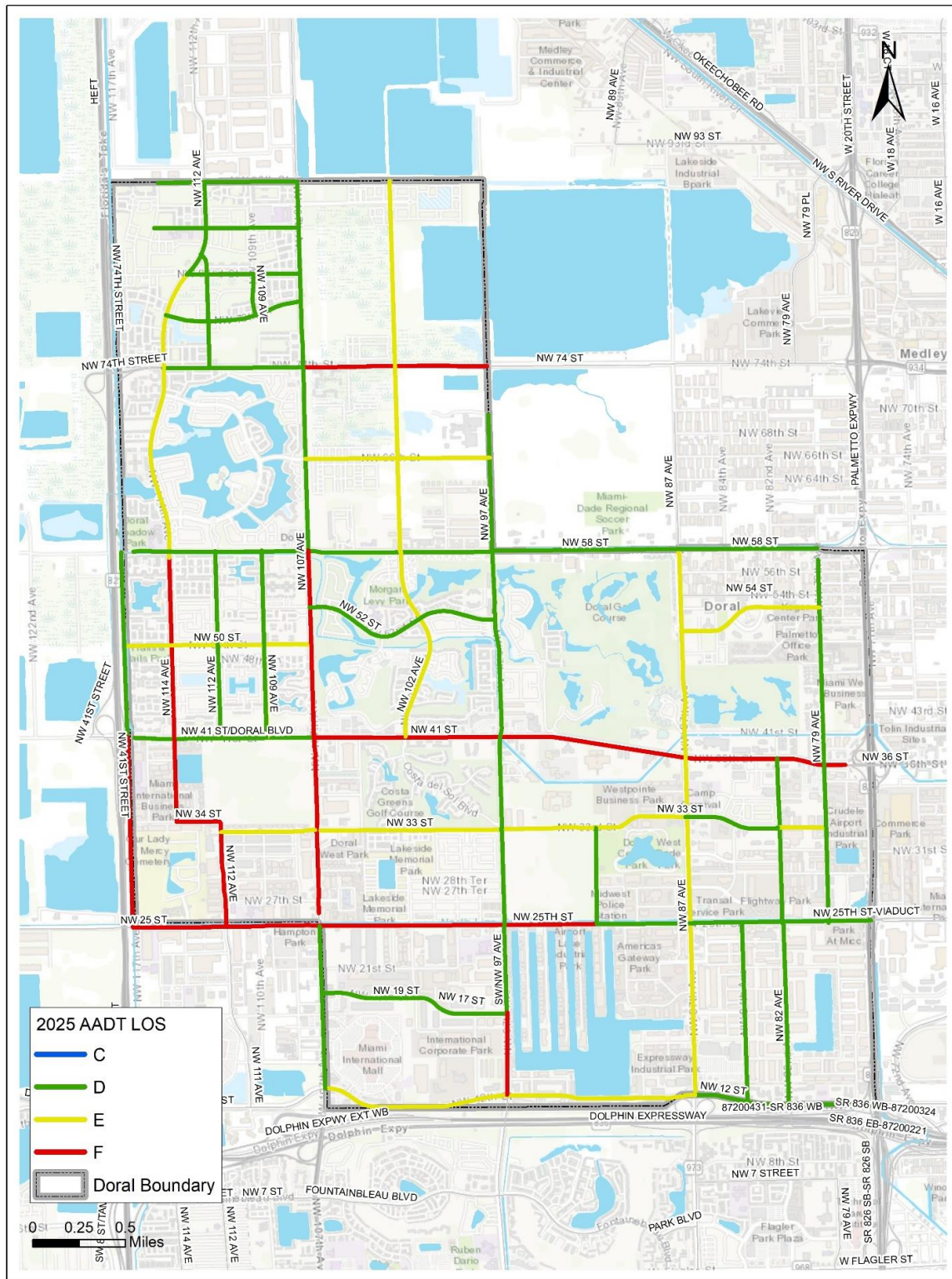
Space Left Blank Intentionally

Figure 1: 2018 Daily Level-of-Service Roadway Conditions



Source: City of Doral Biennial Traffic Monitoring Report, October 16, 2018.

Figure 2: 2025 Projected Daily Level-of-Service Roadway Conditions



Source: City of Doral Biennial Traffic Monitoring Report, October 16, 2018.

The potential mitigation solutions to these documented and projected future traffic conditions is to increase the miles of sidewalks and bike lanes, increase trolley service and make modifications to routes as needed, and roadway and intersection improvements. These mitigation strategies are documented in the preparation of the FY 2022-2026 Schedule of Capital Improvements presented later in this report in Table 17.

2. Intersections

The City’s Transportation Master Plan (2016) included a total of 30 intersections with 29 signalized and 1 unsignalized intersection. The traffic volumes collected in the field were checked for accuracy. Pedestrian volumes were also input and analyzed in the Synchro software. For signalized intersections, the existing signal timings were obtained from Miami-Dade County. The Levels-of-Service (LOS) analyses for the study intersections follow the procedures outlined in the 2010 Highway Capacity Manual (HCM), Transportation Research Board, Special Report 209, and the latest Synchro software. The LOS findings have been summarized for 2016 Existing Conditions and 2016 Existing Conditions with Proposed Mitigation. It should be noted that only for unsignalized intersection, HCM does not compute a LOS value for “Yield” and “Free Flow” traffic movements. Consequently, HCM does not determine an overall LOS for those particular unsignalized intersections. The intersections in Table 2 below resulted in an overall LOS E or F during morning and afternoon peaks.

Table 2: Existing Intersection Conditions LOS Summary

Intersection		Traffic Control	Overall LOS/Delay ^[1]	Approach LOS ^[2]			
No.	Name			NB	SB	EB	WB
1	NW 12th Street & NW 107th Avenue	Signalized	E/55.9 sec (E/64.9 sec)	D (D)	D (D)	E (F)	E (F)
2A	NW 12th Street & NW 97th Avenue (Off Ramp)	Signalized	C/20.3 sec (A/8.5 sec)	N/A	C (C)	C (B)	A (A)
2B	NW 12th Street & NW 97th Avenue (On Ramp)	Signalized	A/9.8 sec (B/10.5 sec)	C (B)	N/A	A (A)	B (B)
3	NW 12th Street & NW 87th Avenue	Signalized	D/52.6 sec (D/54.6 sec)	C (D)	D (D)	F (F)	D (E)
4	NW 12th Street & NW 82nd Avenue	Signalized	C/26.1 sec (B/19.1 sec)	N/A	C (B)	C (B)	C (C)
5	NW 25th Street & NW 117th Avenue	Signalized	D/52.3 sec (E/72.6 sec)	E (F)	F (F)	D (D)	B (D)
6	NW 25th Street & NW 107th Avenue	Signalized	E/63.7sec (E/65.0 sec)	E (E)	D (E)	E (E)	D (E)
7	NW 25th Street & NW 97th Avenue	Signalized	D/43.9 sec (E/55.3 sec)	D (D)	D (E)	D (E)	D (D)
8	NW 25th Street & NW 87th Avenue	Signalized	E/57.5 sec (E/61.1 sec)	D (D)	D (D)	E (F)	E (E)
9	NW 25th Street & NW 82nd Avenue	Signalized	E/56.4 sec (D/53.1 sec)	E (E)	F (E)	C (D)	E (D)
10	NW 25th Street & NW 79th Avenue	Signalized	D/37.7 sec (E/65.8 sec)	E (D)	E (F)	C (D)	C (C)
11	NW 33rd Street & NW 107th Avenue	Signalized	F/85.2 sec (D/54.6 sec)	E (D)	F (C)	F (F)	D (E)
12	NW 33rd Street & NW 97th Avenue	Signalized	E/69.0 sec (E/62.3 sec)	D (D)	E (D)	F (D)	E (F)
13	NW 33rd Street & NW 87th Avenue	Signalized	E/55.4 sec (E/67.5 sec)	D (E)	D (D)	F (E)	E (F)
15	NW 41st Street & HEFT NB Off -Ramp	Signalized	B/11.5 sec (A/7.9 sec)	A (B)	N/A	B (B)	A (A)
16	NW 41st Street & NW 115th Avenue	Signalized	D/35.2 sec (D/36.3 sec)	C (E)	E (D)	C (C)	D (D)
17	NW 41st Street & NW 114th Avenue	Signalized	E/72.4 sec (E/60.7 sec)	E (F)	F (F)	E (D)	D (D)

Capital Improvements Element Update

18	NW 41st Street & NW 107th Avenue	Signalized	F/80.8 sec (E/77.8 sec)	F (E)	F (F)	E (E)	F (F)
19	NW 41st Street & NW 102nd Avenue	Signalized	D/40.7 sec (D/36.1 sec)	F (E)	E (E)	C (C)	C (C)
20	NW 36th Street & NW 87th Avenue	Signalized	E/69.7 sec (E/70.2 sec)	D (E)	E (F)	F (E)	E (E)
21	NW 36th Street & NW 82nd Avenue	Signalized	C/32.1 sec (D/45.6 sec)	F (F)	F (F)	C (C)	B (B)
22	NW 36th Street & NW 79th Avenue	Signalized	E/68.4 sec (F/124.8 sec)	F (F)	F (F)	D (E)	E (E)
23	NW 58th Street & NW 114th Avenue	Signalized	D/53.7 sec (D/42.8 sec)	D (C)	C (D)	E (D)	F (D)
24	NW 58th Street & NW 107th Avenue	Signalized	E/62.9 sec (E/69.3 sec)	F (F)	D (E)	E (D)	E (E)
25	NW 58th Street & NW 97th Avenue	Signalized	E/69.1 sec (E/73.1 sec)	F (F)	F (F)	D (D)	D (E)
26	NW 58th Street & NW 87th Avenue	Signalized	E/60.1 sec (F/91.1 sec)	F (F)	F (F)	C (C)	D (D)
27	NW 58th Street & NW 79th Avenue	Signalized	E/64.2 sec (F/95.4 sec)	F (F)	F (E)	E (E)	D (D)
28	NW 74th Street & NW 114th Avenue	Signalized	E/73.9 sec (F/143.9 sec)	F (F)	F (F)	D (D)	D (E)
29	NW 74th Street & NW 107th Avenue	Signalized	F/140.8 sec (F/91.3 sec)	C (C)	F (D)	F (B)	B (F)
30	NW 74th Street & NW 97th Avenue	Unsignalized	F/62.0 sec (F/67.7 sec)	F (F)	A (A)	B (C)	F (B)
<p>[1] - AM LOS without parenthesis; PM LOS with parenthesis; Delay in seconds per vehicle [2] - AM LOS without parenthesis; PM LOS with parenthesis</p>							

Following review with the City staff of the information in Table 2, a mitigation strategy for each intersection with LOS E was developed. Mitigation includes adding lane capacity, removal of split phasing and signal timing optimization. Proposed improvements were analyzed with results included in Table 3. With the inclusion of proposed mitigation measures, the overall level of service for all the intersections improves, yet there are intersections that remain at LOS E or F.

Table 3: Existing Intersection Traffic with Mitigation LOS Summary

Intersection		Traffic Control	Overall LOS/Delay ^[1]	Approach LOS ^[2]			
No.	Name			NB	SB	EB	WB
1	NW 12th Street & NW 107th Avenue	Signalized	D/53.1 sec (E/58.1 sec)	D (D)	D (D)	E (E)	D (E)
2A	NW 12th Street & NW 97th Avenue (Off Ramp)	Signalized	C/20.1 sec (A/8.4 sec)	N/A	C (C)	C (B)	A (A)
2B	NW 12th Street & NW 97th Avenue (On Ramp)	Signalized	A/7.4 sec (B/8.5 sec)	B (A)	N/A	A (A)	B (B)
3	NW 12th Street & NW 87th Avenue	Signalized	D/47.6 sec (D/46.1 sec)	D (C)	D (D)	F (F)	D (E)
4	NW 12th Street & NW 82nd Avenue	Signalized	C/26.1 sec (B/19.1 sec)	N/A	C (B)	C (B)	C (C)
5	NW 25th Street & NW 117th Avenue	Signalized	C/29.2 sec (D/43.1 sec)	D (D)	D (C)	C (C)	B (D)
6	NW 25th Street & NW 107th Avenue	Signalized	E/59.9 sec (E/61.4 sec)	D (D)	D (D)	E (E)	E (F)
7	NW 25th Street & NW 97th Avenue	Signalized	C/31.8 sec (D/40.6 sec)	C (C)	C (D)	C (D)	C (D)
9	NW 25th Street & NW 82nd Avenue	Signalized	D/50.2 sec (D/51.9 sec)	E (E)	E (E)	D (D)	D (D)
10	NW 25th Street & NW 79th Avenue	Signalized	D/38.9 sec (D/46.2 sec)	D (D)	E (D)	C (D)	D (C)
11	NW 33rd Street & NW 107th Avenue	Signalized	E/55.5 sec (D/44.5 sec)	E (D)	D (C)	E (E)	D (E)
12	NW 33rd Street & NW 97th Avenue	Signalized	E/56.4 sec (D/46.9 sec)	D (D)	D (D)	D (D)	E (D)
13	NW 33rd Street & NW 87th Avenue	Signalized	D/54.7 sec (D/50.8 sec)	D (D)	E (D)	D (D)	D (E)

16	NW 41st Street & NW 115th Avenue	Signalized	D/36.6 sec (D/39.1 sec)	D (D)	E (D)	D (C)	C (D)
17	NW 41st Street & NW 114th Avenue	Signalized	E/58.1sec (D/51.8 sec)	D (E)	E (D)	E (D)	D (D)
18	NW 41st Street & NW 107th Avenue	Signalized	E/69.5 sec (E/73.1 sec)	E (E)	F (E)	E (E)	D (F)
19	NW 41st Street & NW 102nd Avenue	Signalized	C/30.5 sec (C/31.0 sec)	D (D)	D (D)	C (C)	C (C)
20	NW 36th Street & NW 87th Avenue	Signalized	E/62.1 sec (E/62.2 sec)	E (E)	E (E)	E (E)	D (E)
21	NW 36th Street & NW 82nd Avenue	Signalized	C/22.9 sec (C/23.4 sec)	E (E)	E (E)	B (B)	B (B)
22	NW 36th Street & NW 79th Avenue	Signalized	D/47.0 sec (F/103.9 sec)	D (F)	E (F)	D (F)	D (E)
23	NW 58th Street & NW 114th Avenue	Signalized	D/38.0 sec (D/47.6 sec)	C (D)	C (D)	E (D)	D (D)
24	NW 58th Street & NW 107th Avenue	Signalized	D/47.9 sec (D/46.7 sec)	D (D)	D (D)	E (D)	D (D)
25	NW 58th Street & NW 97th Avenue	Signalized	D/42.4 sec (D/37.6 sec)	D (C)	D (C)	D (D)	C (D)
26	NW 58th Street & NW 87th Avenue	Signalized	D/41.8 sec (D/45.9 sec)	D (E)	E (D)	D (D)	C (D)
28	NW 74th Street & NW 114th Avenue	Signalized	D/40.8 sec (D/40.2 sec)	C (C)	C (C)	D (D)	D (E)
29	NW 74th Street & NW 107th Avenue	Signalized	D/53.8 sec (D/46.3 sec)	D (E)	E (E)	E (B)	C (D)
30	NW 74th Street & NW 97th Avenue	Signalized	B/10.0 sec (C/20.7 sec)	D (B)	A (A)	A (B)	B (C)
[1] - AM LOS without parenthesis; PM LOS with parenthesis; Delay in seconds per vehicle [2] - AM LOS without parenthesis; PM LOS with parenthesis							

3. Transit

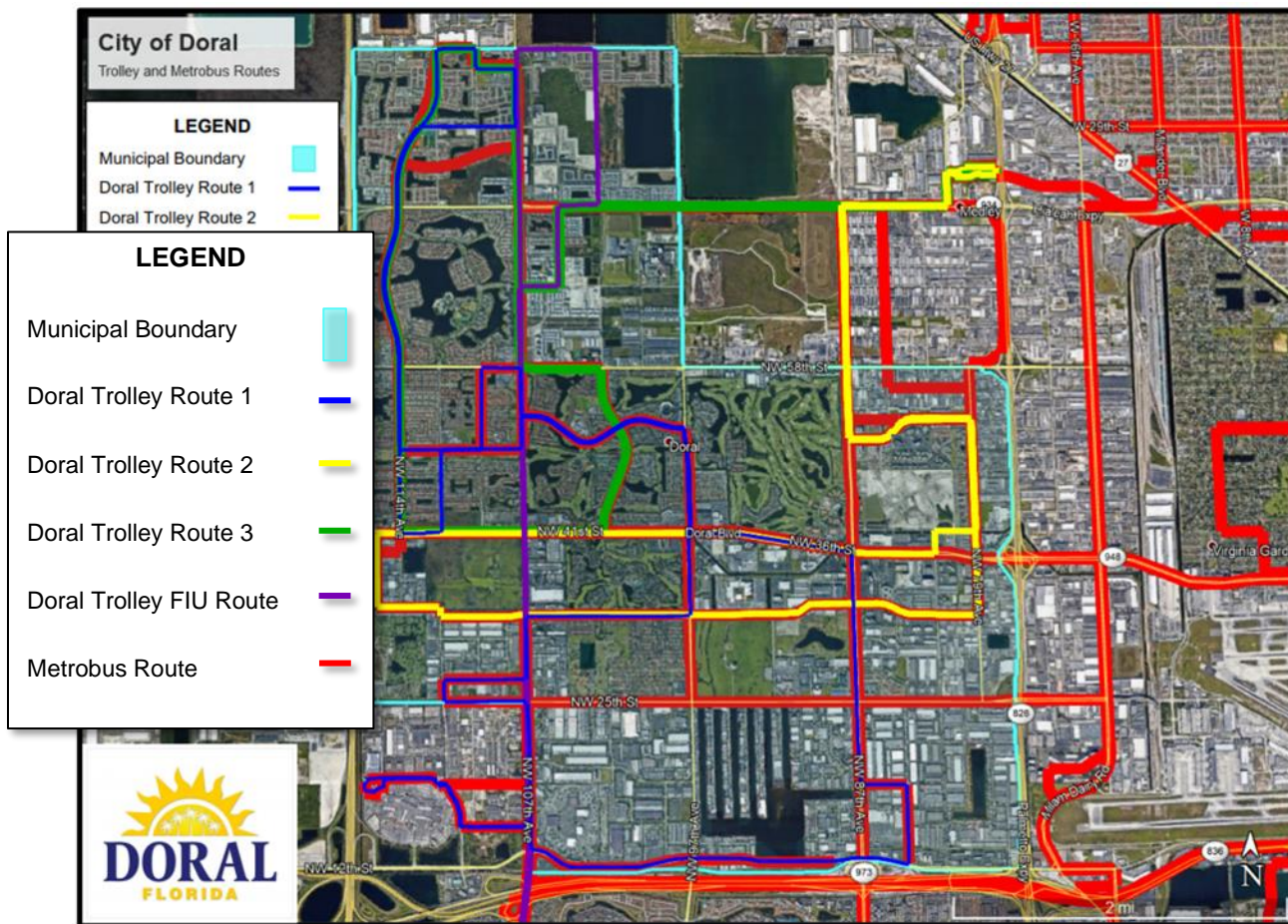
The City of Doral is served by eight (8) Miami-Dade Transit (MDT) routes 7, 36, 71, 87, 132, 137, 238, the 95-Express Earlington Heights Route (952) and four (4) Doral Trolley routes. Figure 3, shows the combined routes of Miami-Dade Transit and the City of Doral Trolleys within the City’s boundary.

The free-fare Doral Trolley System launched on February 1, 2008. It is a local circulator which now serves the city through four (4) routes (R1, R2, R3 and R4), with route R1 providing connector service to MDT Metrobus routes at Miami International Mall and routes R2 and R3 providing connector service to the Miami-Dade Transit Metrorail via the Palmetto Metrorail Station in Medley. Route R4 commenced in August 2018 and provides service to Florida International University (FIU) along NW 107th Avenue. While these routes are intended to serve separate areas of the city, there is significant overlap between them. Because there are no dedicated trolley lanes, trolleys operate on the same roadways used by individual vehicles. The city conducts regular trolley ridership surveys to provide insight into future changes to route alignment, stops, hours of operation and frequency.

Route 1 has the highest ridership, followed by Routes 3, 2 and 4, respectively. Route 4 has a comparatively low overall ridership and is the newest route. (This route is expected to increase after the FIU Park-and-Ride transit hub is built out.) High ridership boarding locations show the locations of high activity and indications of the demographics of route ridership, but where the routes intersect, provide insight into potential hub or corridor development areas. Conversely, low ridership indicates a need to consolidate stops and modify routes consistent with current land use patterns. There are also lower than average performing stops on all four routes. Stops falling into these lower categories will be examined for alterations or elimination to improve trolley efficiency and reduce future congestion mitigation.

Factors that affect both the level of ridership and the quality of trips include access to and amenities at trolley stops. Trolley stop accessibility includes connectivity by sidewalks connecting to stops and improvements would include meeting all ADA requirements, convenient stop locations, shelters, shade, signage, schedules, and easy boarding curb heights. Key urban centers with large job, housing, and/or retail activity centers within the City should be joined by transit routes, as well as, primary locations/ transit connections located outside the City Limits.

Figure 3: Transit Routes in Doral



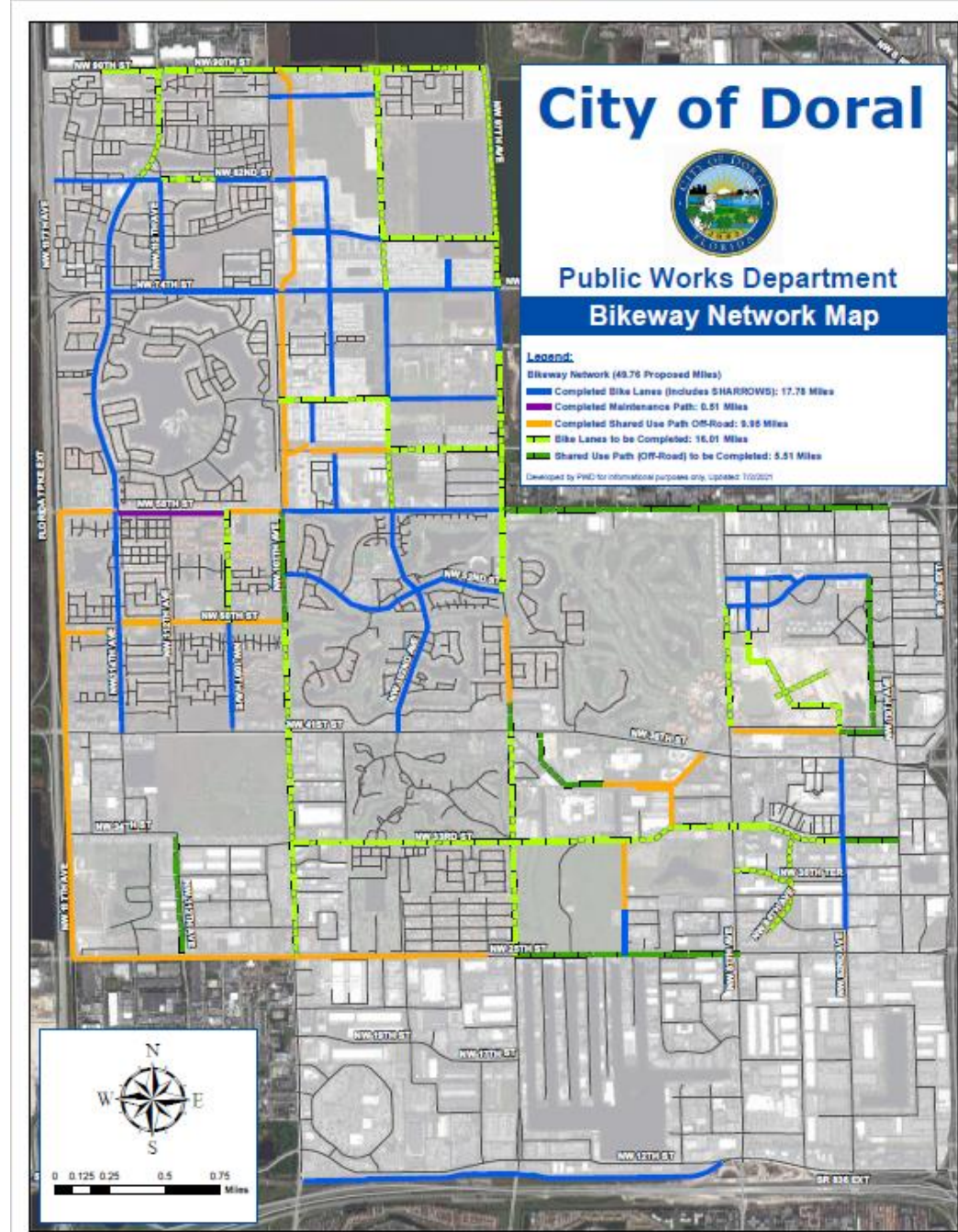
Source: City of Doral Public Works Dept., July, 2021.

4. Bicycle/Pedestrian Facilities

The City’s goal is to encourage intra-city trips by bicycles and walking. A majority of the City of Doral is interconnected by sidewalks and the city has dedicated annual funding to continue to connect missing segments. The City has also developed a Bikeway Network Master Plan that contains a series of interconnected bike lanes and multi-use paths that will be implemented by both public and private entities. Figure 4, shows the current and planned bikeway network within Doral. The existing bike network

consists of 17.78 miles of bike lanes, 9.95 miles of off-road shared-use paths, and 0.51 miles of maintenance path for a total of 28.24 miles of current bike facilities. The city is also currently designing a total of 21.54 miles of additional bike lanes and shared-use paths as shown in Figure 4.

Figure 4. Doral's Existing and Planned Bikeway Network



Source: City of Doral Public Works Dept., July, 2021.

5. De Minimus Impact Report

Pursuant to State Statute Section 163.3180(6), local governments must submit a De Minimus Impact Report with the annual Capital Improvements Element update of the City’s Comprehensive Plan. A De Minimus Impact is defined as: an impact that would not affect more than 1 percent of the maximum volume at adopted LOS of the affected transportation facility; no impact is a de minimus if the sum of the existing roadway volumes and the projected volumes from approved projects on each transportation facility would exceed 110 percent of the maximum volume at the adopted LOS and provided that an impact of a single-family home on an existing lot will constitute a De Minimus Impact on any roadway regardless of the level of deficiency of the roadway. Based on the above definition of De Minimus Impact and current city traffic data, the City of Doral does not need to file a De Minimus Impact Report.

6. 5-Year Level-of-Service Transportation Projects

To address the LOS deficiencies now and expected by 2025-26, the City has programmed 18 roadway, intersection and multi-modal capacity improvement projects within the current 5-year planning period. These projects are listed in Table 4 below and will be funded primarily through the City’s Transportation Fund as shown in Table 16.

Table 4. City Transportation Projects FY 2022-2026

Project Location	Type of Work	Implementation Timeframe (Fiscal Year)
1. Citywide (Milling & Resurfacing / Re-Striping)	Roadway Maintenance	2026
2. Landmark Community Complete Streets	Traffic Calming Improvements	2023
3. Citywide	Traffic Calming Improvements	2023
4. NW 90 Street (Vacant Land Section 7)	Roadway Widening	2026
5. NW 102 Ave. (76 St. to 86 St.)	Roadway Widening	2026
6. Citywide (Bus shelters)	Transit Mobility & Infrastructure	2025
7. NW 112 & NW 114 Ave Intersection Improvements	Roadway Improvements	2023
8. NW 114 Avenue (34 St - 39 St)	Roadway Improvements	2024
9. NW 34 Street (117 Ave - 112 Ave)	Roadway Improvements	2023
10. NW 117 Avenue (NW 25 St - NW 34 St)	Roadway Improvements	2026
11. Section 7 Traffic Calming	Roadway Improvements	2023
12. Intersection Improvements - Citywide	Roadway Improvements	2026
13. Do Not Block Box Intersections	Roadway Improvements	2026
14. FPL Undergrounding	Roadway Improvements	2024
15. NW 33 Street (NW 79 - 82 Avenue) Reconstruct	Roadway Improvements	2024
16. NW 99 Ave. (64 - 66 St), NW 102 Ave. (64 - 66 St.), NW 66 St. (102 - 99 Ave.)	New Road Construction	2023
17. NW 112 Ave (34 St to 41 St) - Roadway Const.	New Road Construction	2025
18. NW 112 Ave (34 St to 41 St) - Land Acquisition	New Road Construction	2024

Source: Doral Public Works Department (July 2021)

In addition to the City-funded transportation projects listed above, a number of capacity improvement projects in the City have been identified in the current Miami-Dade County Transportation Planning

Organization (TPO) 5-year Transportation Improvement Program (TIP). The TIP is a staged multi-year program similar to the CIE at the regional scale and coordinates all cities, Miami-Dade County departments, State of Florida, Turnpike Enterprise, and Expressway Authority required for all federally-funded transportation projects and prioritizes Priority Transportation Projects (PTP) funded over the next 5-year planning period. The planned projects within or affecting the City of Doral are shown in *Table 5*.

Table 5: Planned State and County Transportation Projects in Doral Area FY 2022-2026

FACILITY	LIMITS	TYPE OF WORK	RESPONSIBLE AGENCY	CONSTRUCTION TIME FRAME	TOTAL COST FY 2022-2026
SR 826 (Palmetto Expressway)	SR 836 to SR 93/I-75	PD&E/EMO	FDOT	----	PYF*
SR 826 (Palmetto Expressway)	From SR 968 (W Flagler St to NW 154 St)	PD&E/EMO	FDOT	----	\$6.6 million
SR 826 (Palmetto Expressway)	Express Lanes Tolling & Ramp Signaling Operation	Technical Assistance	FDOT	2021-2024	\$6.191 million
City of Doral - Bicycle/Pedestrian Bridge Over Doral Blvd	----	Pedestrian/Wildlife Overpass	FDOT	2021-2022	\$2.438 million
City of Doral- FIU/Panther Station Trolley Route	----	Transit Service Demonstration	FDOT	2020-2021	PYF*
HEFT	MP 33.2 to MP 35.4 (SB) & MP 35.4 to 38.0 (NB)	Resurfacing	FL Turnpike Enterprise	----	PYF*
HEFT	MP 33.2 to MP 40.15	Thermoplastic For HEFT Resurfacing	FL Turnpike Enterprise	----	PYF*
HEFT	MP 33.2 to MP 40.15	Guardrail	FL Turnpike Enterprise	----	PYF*
HEFT	SR 836 (MP 32) to NW 106 St (MP 34)	6/8 to 10 Lanes Including Express Lanes	FL Turnpike Enterprise	2021-22	\$12.000 million
HEFT	SR 836 (MP 32) to NW 106 St (MP 34)	Signing/Pavement Marking	FL Turnpike Enterprise	----	PYF*
HEFT	SR 836 to I-75	Miscellaneous Construction	FL Turnpike Enterprise	----	PYF*
SR 836 Interchange Modifications at 87th Ave	SR 836 West of NW 82 Ave to NW 97 Ave	Interchange Improvements	MDX	----	PYF*
SR 836 (Dolphin) New HEFT Ramp Connections	NB/SB HEFT to EB/WB SR 836 (Dolphin)	New Connector	MDX	2021-2022	\$8 million
NW 58 St	NW 97 Ave to SR 826	Road Reconstruction	MDC	Under Design	PYF*
NW 82 Ave	NW 7 St to NW 12 St	Widen from 2 to 3 Lanes	MDC	Under Construction	PYF*
NW 84 Ave	NW 58 St to NW 74 St	Widen from 2 to 4 Lanes	MDC	Design Completed	PYF*
NW 79 Ave and NW 56 St	NW 79 Ave and NW 56 St	Traffic Signal	MDC	Under Design	PYF*
NW 107 Ave and NW 14 St	NW 107 Ave and NW 14 St	Traffic Signal	MDC	Under Design	PYF*
NW 97 Ave	NW 52 St to NW 58 St	Widen from 2 to 4 Lanes	MDC	Under Design	PYF*
NW 97 Ave	NW 58 St to NW 70 St	Widen from 2 to 4 Lanes	MDC	Under Design	PYF*
NW 107 Ave and NW 12 St	NW 107 Ave and NW 12 St	Intersection Improvement	MDC	Design Completed	PYF*

Capital Improvements Element Update

FACILITY	LIMITS	TYPE OF WORK	RESPONSIBLE AGENCY	CONSTRUCTION TIME FRAME	TOTAL COST FY 2022-2026
NW 107 Ave and NW 58 St	NW 107 Ave and NW 58 St	Intersection Improvement	MDC	Construction Completed	PYF*
NW 107 Ave and NW 27 St	NW 107 Ave and NW 27 St	Intersection Improvement	MDC		\$0.629 million
NW 12 St	----	Add Bus Only Lanes	MDC	----	\$ 3.928 million
NW 74 St and NW 102 Ave	NW 74 St and NW 102 Ave	Traffic Signal	MDC	Construction Completed	PYF*
NW 74 St and NW 97 Ave	NW 74 St and NW 97 Ave	Traffic Signal	MDC	Construction Completed	PYF*
NW 79 Ave and NW 56 St	NW 79 Ave and NW 56 St	Traffic Signal	MDC	Under Design	\$0.450 million
NW 98 Ct and NW 17 St	NW 98 Ct and NW 17 St	Traffic Signal	MDC		\$0.353 million
NW 107 Ave and NW 14 St	NW 107 Ave and NW 14 St	Traffic Signal	MDC		\$0.149 million
NW 25 Street	NW 117 Ave to NW 87 Ave	Widen from 4 to 6 Lanes	MDC	Under Design	\$33 million
NW 12 St	NW 97 Ave to NW 93 Ct	Resurfacing	MDC	2021-2022	\$0.74 million
NW 41 St	HEFT to NW 114 Ave	Resurfacing	MDC		\$0.218 million
NW 41 St	NW 114 Ave to NW 107 Ave	Resurfacing	MDC	2011-2022	\$0.87 million
NW 97 Ave	NW 36 Street to NW 58 Street	Resurfacing	MDC		\$0.272 million
NW 107 Ave	NW 12 St to NW 25 St	Resurfacing	MDC		\$0.895 million
NW 107 Ave	NW 58 St to NW 74 St	Resurfacing	MDC		\$0.580 million
NW 107 Ave	NW 74 St to NW 90 St	Resurfacing	MDC		\$0.593 million

*PYF: Prior Year Funding

** JPA: Joint Participation Agreement

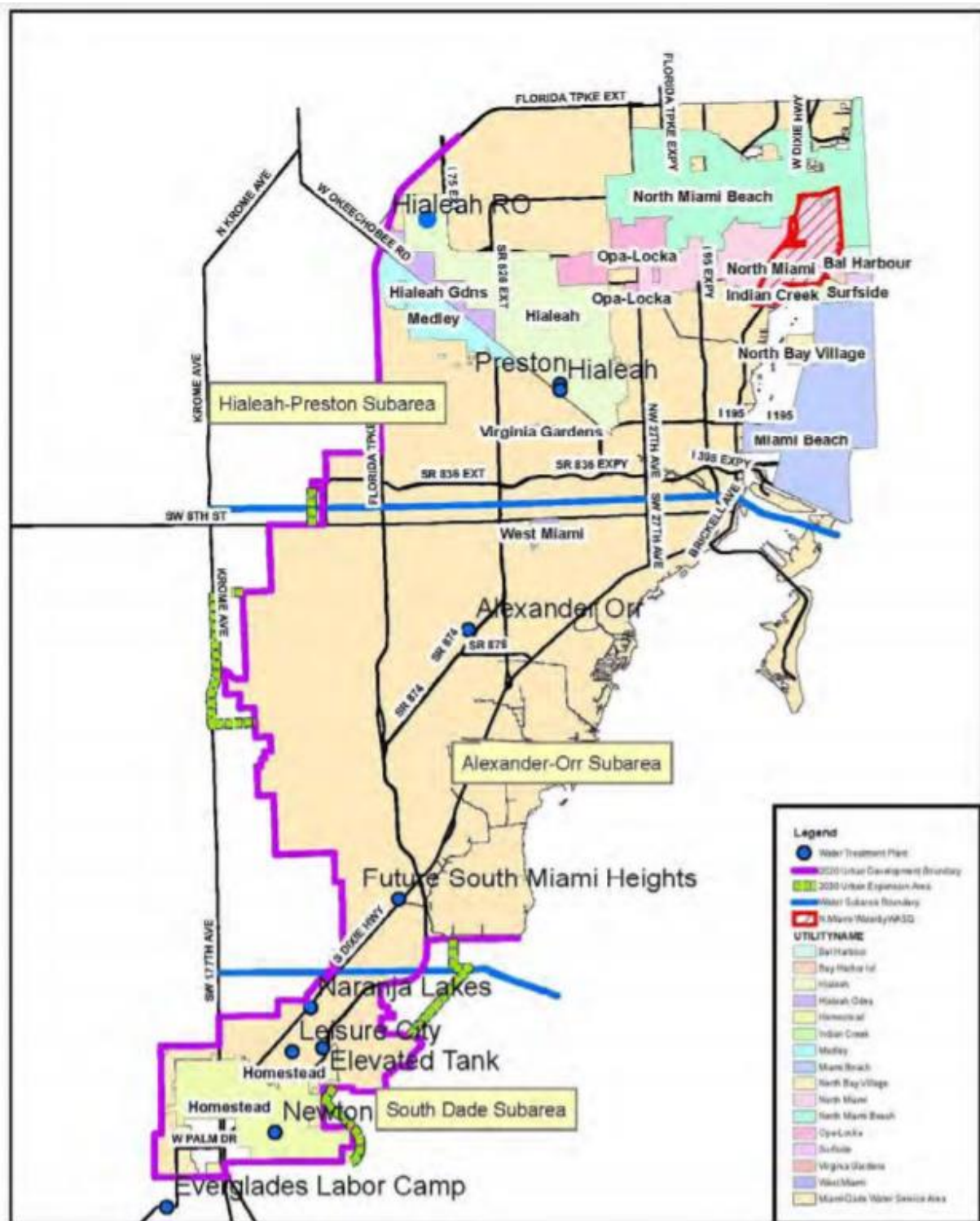
Source: Miami-Dade County TPO 2022 TIP, (2022-26) Approved May 20, 2021.

Additional roadway improvement projects currently not programmed in the FY 2022-2026 TIP plan may be added in future CIE and TIP updates as funding becomes available at the Federal, State and local levels of government. The City is proactively addressing local roadway deficiencies occurring primarily on its roadways and works closely with County and State agencies to address future LOS requirements on their roadways through FY 2025-26 and beyond.

B. Potable Water Service

The residents of the City of Doral obtain their potable water and sewer service directly from WASD, which is responsible for ensuring enough capacity to meet the water needs of existing and future water customers. In addition to serving the City, WASD is the designated regional supplier of potable water for most of the cities in Miami-Dade County. In that capacity, the WASD supplies the City of Doral's residential and non-residential property owners with potable water on a retail basis and bills these customers for this service. WASD owns, operates, and maintains a central potable water distribution system, along with the facilities for collection and treatment of water, which then transmits the potable water to its citizens throughout most of Miami-Dade County. See Figure 5: Existing WASD Water Treatment Plants below.

Figure 5: Existing WASD Water Treatment Plants



Source: City of Doral Water Supply Plan 2021

Table 6: City of Doral Water Usage Projections

Table 3.4 - Retail Water Use Forecast in the City of Doral, 2020 to 2040

Year	Population Forecast (a)	2018 Per Capita (gallons per person per day) (b)	Annual Average Daily Water Demand, mgd
(1)	(2)	(3)	(4) = (2) x (3) / 1,000,000
2020	75,522	126.94	9.59
2025	96,606	126.94	12.26
2030	104,072	126.94	13.21
2035	112,115	126.94	14.23
2040	120,779	126.94	15.33

(a) From City of Doral, 2020.

(b) City of Doral water demand in Gross Gallons Per Person Per Day is from Miami-Dade County that is reflected in the Draft Miami Dade Water and Sewer Department 10-Year Water Supply Facilities Work Plan October 2020.

Source: City of Doral Water Supply Plan 2021.

Regional water system capacity projections have been developed based on current water system capacity, planned WASD capacity projects, and current and projected demand from retail water customers within the County. These studies show that the County will have sufficient capacity through 2040. There are no private potable water facilities in the City of Doral.

Wellfield Protection Measures: WASD’s wellfields and their corresponding Cones of Influence are in or near the City. These wellfields consist of 45 individual wells and have a total designed installed capacity of approximately 295 mgd. Of these wells, 23 provide raw water to the Hialeah Water Treatment Plant while the remaining 22 wells service the J.E. Preston Water Treatment Plant. To protect the quality of the groundwater in the area, the City of Doral has adopted the Miami-Dade County Wellfield

Protection Program, which restricts the types of land uses allowed within the area of the wellfield cones of influence. The following are some of the restrictions associated with the Wellfield Protection Program:

- Only uses that do not generate hazardous waste are allowed within the Cone of Influence.
- All permitted land uses within the Cone of Influence shall be required to connect to the WASD central sewer collection system.
- Developments within the Cone of Influence shall be required to meet the minimum requirements for percentages of pervious area.

- Land uses within the Cone of Influence shall be restricted to those uses that do not create water pollution.

Water Conservation Measures: Miami-Dade County Water Conservation Plans and Ordinances. The City of Doral, located in Miami-Dade County, is subject to the following County plans and ordinances:

- **Miami-Dade Water Use Efficiency Plan:** The Miami-Dade WASD's 20-year Water Use Efficiency Goal-Based Plan (Efficiency Plan) was approved by the SFWMD in May 2007. Included in the Efficiency Plan is the Water Conservation Best Management Practices (BMP) Implementation Schedule, Costs, and Savings Projections through the year 2026. WASD is implementing the BMPs included in the 2019 Annual Report for the Water Conservation Plan to improve the management of traditional water supplies, encourage development of alternative water supplies and improve water use efficiency. Several initiatives were adopted by WASD to encourage efficient use of water by residential and non-residential users. Some initiatives included plumbing retrofits, landscape irrigation evaluations, and residential and commercial water use evaluations and rebates. To ensure future water savings, the Water Use Efficiency Standards for new residential and commercial developments enacted by the Miami-Dade Board of County Commissioners on January 1, 2009 are being implemented through local building codes. The standards include technical amendments to the Building Code to require maximum water conservation flow rates for plumbing fixtures. Because of these efforts, as of December 31, 2019, the County saw an 18.6 mgd reduction in finished water demand from the year prior to the implementation of the Efficiency Plan in 2006 (from 341.62 mgd to 323.04 mgd).
- **Miami-Dade County Water Conservation Plans and Development Codes:** The County adopted a Water Conservation Plan that was added to its Water Use Efficiency Section as mandated by County Ordinance 06-177, Section 32-83.1 of the Miami-Dade County Code. The Plan identifies BMPs for the service area. (Doral's Comprehensive Plan – Policies: 1.5.3, 5A.3, 5A.3.2) Since January 1, 2009, the county's building code, specifically Section 8-31 and 32-84, requires the installation of water efficient fixtures and high efficiency appliances. In 2007, Section 3.0 Provision of Water Supply City of Doral, Florida 12 Water Supply Facilities Work Plan Update - 2021 the County developed a water conservation program that provides rebates to residents that install high efficiency faucets, toilets and showerheads in properties constructed prior to 1996. It also includes rebates for water efficient upgrades to irrigation systems in single family and large properties throughout the County.
- **Miami-Dade County Permanent Landscape Irrigation Restriction:** Lawn and landscape irrigation throughout the county has been limited to two days per week year-round as required by Section 32-8.2 of the Miami-Dade County Code of Ordinances. Irrigation is not permitted between the hours of 10:00 a.m. and 4:00 p.m.
- **Miami-Dade County Landscape Standards:** Development within the county must comply with landscape standards in Sections 18-A and 18-B of the County Code which encourages Florida Friendly Landscaping to reduce outdoor water use.
- **Miami-Dade County Multi-Family Sub-Metering:** The County Code was also modified to authorize the use of submetering in multifamily residential developments, requiring a meter be installed in each individual dwelling unit for water billing purposes instead of being billed using a single master meter. Use of submeters enhances water use monitoring and encourages water conservation.

- **Water Conservation Based Rate Structure:** Miami-Dade County has adopted a water conservation-based rate structure for its retail water customers. 3.3.2 City of Doral Ordinances and Codes Promoting Water Conservation The City has adopted the following ordinances and codes to promote water conservation by the City’s residents. Because the City does not have access to customer water use data, the City is unable to develop estimates of the amount of water conserved.
- **Use of Florida-Friendly Landscape Principles:** The City of Doral Comprehensive Plan and Land Development Code recommends use of Florida-Friendly landscape materials and the minimum percent of required pervious area that must follow the principles of Florida Friendly Landscape provisions as set forth in the South Florida Water Management District’s Xeriscape Plant Guide II. (Doral’s Comprehensive Plan - Objective: 5A.5. Policies 1.4.2, 1.4.3, 5A.3.2, 6.1.6) Requirement of
- **High Efficiency Plumbing Fixtures in New Construction:** The City of Doral has adopted the Florida Building Code (FBC) which contains plumbing flow restriction requirements. The County Code prohibits the cities within its jurisdiction from enacting standards less stringent from the FBC. The City of Doral Building and Inspection Services also includes, in their procedures, provisions for new construction to have water conservation control devices installed per the Florida Plumbing Code, as a condition for granting certificates of occupancy. (Doral’s Comprehensive Plan – Policy 6.1.6)
- **Rain Sensor Overrides for New Lawn Sprinkler Systems:** The City of Doral has adopted the FBC, which requires the installation of rain sensors on new irrigation systems. Section 3.0 Provision of Water Supply City of Doral, Florida 13 Water Supply Facilities Work Plan Update - 2021 Additionally, the City of Doral abides by all County’s landscape Code requirements, including the use of rain sensors on automatic lawn sprinklers systems. (Doral’s Comprehensive Plan – Policy 1.5.4) **City of Doral Adoption of the SFWMD’s Water Shortage Restrictions:** In 2007, the City of Doral adopted Ordinance No. 2007-13 entitled “Water Restrictions” to protect the water resources of the City from harmful effects of over-utilization during periods of water shortage and to assist the SFWMD as it implements its water shortage plan. The provisions are found in Chapter 47 – Division 2. – Water Restrictions of the City of Doral Code of Ordinances. This ordinance applies to all persons using the City’s water resources that are subject to the “water shortage” or “water shortage emergency” as determined by the SFWMD, whether from a publicly- or privately-owned water utility system, private wells, or private connections with surface water bodies. The use of treated effluent or saltwater is excluded from the requirements of this ordinance. The ordinance references the South Florida Water Management District’s Water Shortage Plan as provided in Chapter 40E-21, Florida Administrative Code.

Enforcement: The City enforces these ordinances through its code compliance department and, by October 2022.

1. 5-Year Level-of-Service Water Projects

Section 163.3177(4)(a), Florida Statutes, requires coordination of the local comprehensive plan with the water management district’s regional water supply plan. Doral receives all potable water service from Miami-Dade County Water and Sewer Department’s (WASD) Hialeah/Preston Water Treatment Plant (WTP). The supply capacity of the Hialeah-Preston Subarea wellfields is 343.43 million gallons per day. The plant is owned and operated by WASD, who is responsible for maintaining the distribution and treatment facilities serving the City of Doral. The City of Doral’s Water Supply Plan and Infrastructure Element Policy 5A.1.1 of the City’s Comprehensive Plan establishes the adopted Level of Service (LOS) standard for

potable water at 127 gallons per capita per day (GPD). According to the State guidelines, the Water Supply Plan and the Comprehensive Plan must address the development of traditional and alternative water supplies, service delivery, conservation, and reuse programs necessary to serve existing and new developments for at least a 10-year planning period. As the city implements its Green Master Plan and Miami-Dade County water restrictions on landscape watering to 2x/week, the City should be able to reduce its water demand (GPD) moving forward. (The city should aim to reduce its average GPD over time to be closer to the State and National averages.)

C. Sanitary Sewer Facilities

The adopted Level of Service (LOS) standard for sanitary sewer in Doral is 100 gallons per capita per day, as noted in Policy 5B.1.1 of the Infrastructure Element of the Comprehensive Plan. Sanitary sewer service in the City is provided by Miami-Dade County's Water and Sewer Department (WASD). The LOS standard for wastewater in the County requires all regional water treatment plants to operate with a physical capacity of no less than the annual average daily sewage flow. The Hialeah Water Treatment Plant is located at 700 West 2nd Avenue, Hialeah, Florida. This facility has a maximum installed design capacity of 60.0 million gallons per day.

According to WASD, their regional wastewater system will have enough capacity to service the City of Doral through 2026. As the amount of water supply is reduced the amount of wastewater should also reduce in future years. The LOS for sanitary sewer will be maintained in the portions of the City served by WASD's wastewater collection system.

1. 5-Year Level-of-Service Wastewater Projects

No capacity-related projects for the County's wastewater system have been identified within the City of Doral or WASD for the 5-year CIE planning period 2021-2026.

D. Stormwater Management

The City of Doral falls within the boundaries of the C-4 Tamiami Canal and C-6 Miami River Canal watershed basins managed by the South Florida Water Management District (SFWMD). Within the City of Doral are three (3) sub basin secondary canals which convey surface stormwater from the city: the Northline Canal, located along the north side of NW 25th Street, the C-2 Extension Canal, located along NW 117th Avenue, and the Dressels Canal which crosses the City from NW 117th Avenue to the Palmetto Expressway. Figure 6 depicts the canal system in Doral.

Doral adopts the following system-wide drainage Level of Service (LOS) standards for new development and redevelopment in Comprehensive Plan Policy 5C.1.1 of the Infrastructure Element:

- * *Water Quality Standard.* Stormwater facilities shall meet the design and performance standards established in Chapter 62-25, Rule 25.025, Chapter 40-E, Chapter 40E-40, Florida Administration Code (FAC), and Section 24-48, of the Code, with the retention of the first inch of runoff onsite to meet the water quality standards required by Chapter 62-302, Rule 862-302.500, FAC, and Section 24-42 of the Code.

- * Water Quantity Standard. Where two or more standards impact a specific development, the most restrictive standard shall apply:
 - + Post-development runoff shall not exceed the pre-development runoff rate for a 25-year storm event, up to and including an event with 24-hour duration.
 - + Treatment of the runoff from the 5-year storm event, 24-hour duration, in accordance with Section D-4, Part 2, Miami-Dade County Public Works Manual and Sec. 24-48.3 (7) and Rule 40E-40.302, FAC, “Basis of Review, Volume IV Manual.”
 - + Treatment of the runoff from the first one inch of rainfall onsite or the first 0.5 inch of runoff from impervious areas, whichever is greater.

- * Flooding Standard. During the 10-year return design storm event, flooding of minor arterials should be below the crown of the roadway.

The City requires all new developments to provide adequate on-site drainage prior to the issuance of a Building permit to maintain LOS standard for drainage. However, there were a number of pre-existing deficient drainage conditions when the City was incorporated in 2003. In 2006, Doral adopted its first Stormwater Master Plan and in 2014, the City completed an updated Stormwater Master Plan in 2021 which forms the basis for the Stormwater 5-year Schedule of Capital Improvements

The City’s Stormwater Master Plan (SWMP) serves as a planning-level engineering document that analyzes the current condition of storm water management systems across the city. The plan identifies high priority flood prone areas, and establishes a five-year capital improvement plan for implementation. The analysis performed for this SWMP takes into consideration the primary components of the existing storm water management system (manholes, inlets, and major conveyance pipes), canals and lakes, topography, land uses, as well as, groundwater elevations, and historical rainfall when analyzing the primary existing drainage infrastructure throughout the City. These elements are all combined and analyzed within a mathematical Hydraulic and Hydrologic model that simulates the performance of the City’s primary drainage systems using design rainfall events. The City’s secondary drainage storm water management systems, such as individual inlets, manholes, and minor conveyance systems which control drainage within the sub-basin, are not analyzed as a part of this SWMP. The secondary drainage systems are typically analyzed in the construction design phase and through redevelopment projects.

The City’s drainage system deficiencies are identified through a series of sub-basins which are color coded for priority ranking purposes and depicted in Figure 7. This system allows the City to identify and prioritize the most cost-effective storm water management projects for inclusion in the 5-Year CIE Schedule of Capital Improvements and City Capital Improvement Program. The main intent of the contents of this SWMP is to serve as a guide for the City in order to identify problem areas, develop potential future projects, and correlating those future projects with a planning-level cost.

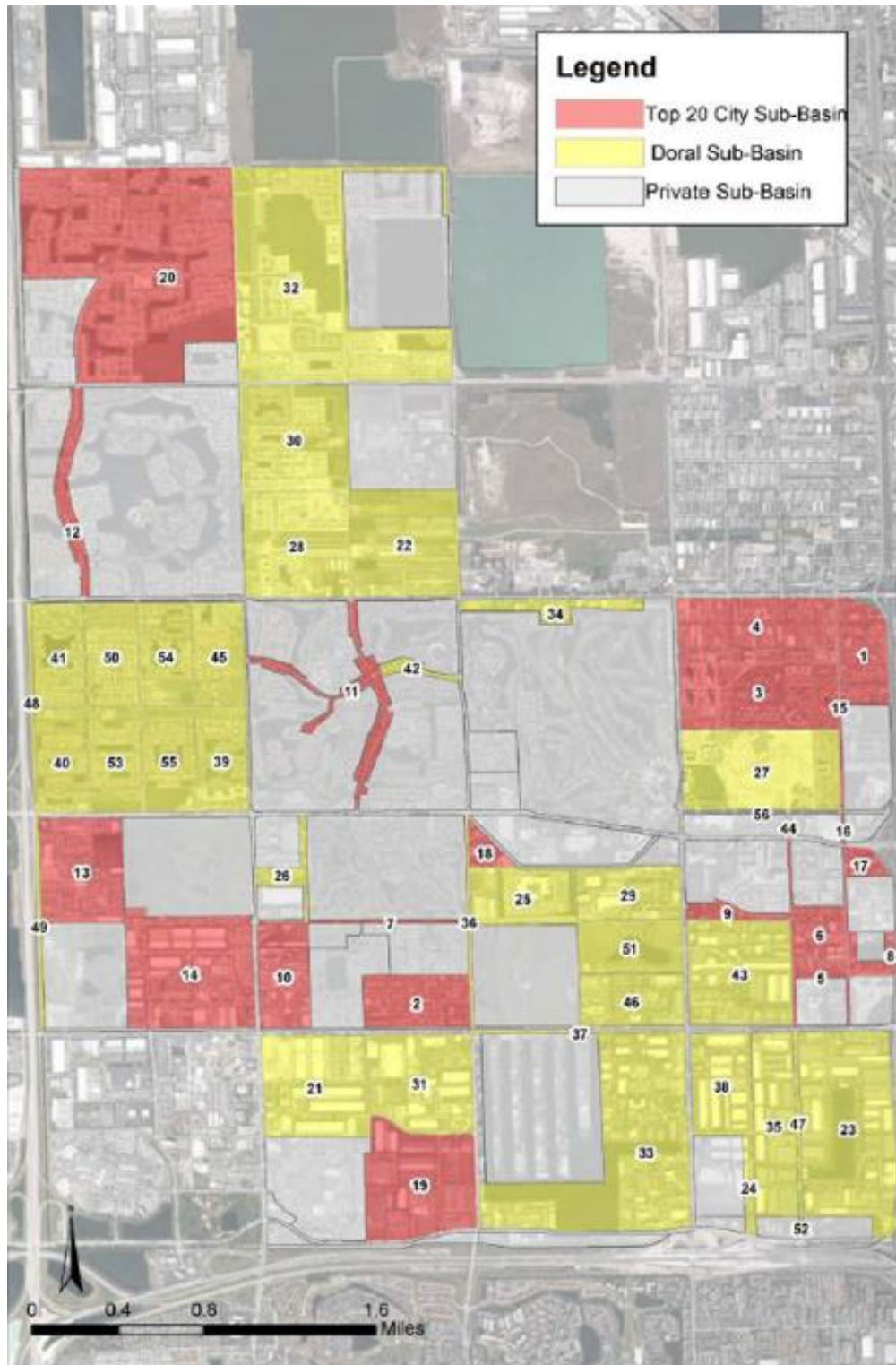
Space Left Blank Intentionally

Figure 6: Doral Canal System



Source: City of Doral Public Works 2021

Figure 7: Prioritized Drainage Sub Basins



Source: City of Doral Public Works 2021

1. 5-Year Level-of-Service Stormwater Projects

The City of Doral has created a Stormwater Fund to continue to fund maintenance and improvements to existing stormwater facilities within the city. Ongoing important stormwater projects are the Canal Bank Stabilization Program that widens, dredges, and provides a pervious hard edge along most interconnected canals within the city. These projects have allowed the city to improve their FEMA flood ranking and reduce insurance premiums for all residents. The citywide general stormwater improvements and maintenance is also funded through the stormwater fund and includes catch basin maintenance, regular street sweeping, canal maintenance, and floating debris removal. The city should begin looking at a revised Stormwater Master Plan to detail a comprehensive study of non-canal BMPs and flood reduction projects. These include integrating the green infrastructure and Low Impact Development methodologies outlined and codified in the city’s Green Master Plan and Low Impact Development Master Plan. Table 7 below shows the projects and costs for specific planned stormwater improvements during the 5-year CIE period. The total cost of the 5-year program is estimated to be \$4,175,000.

Table 7: City Stormwater Projects and Estimated Costs FY 2022-2026

Project Location	FY2021/22 (in \$\$s)	FY2022/23 (in \$\$s)	FY2023/24 (in \$\$s)	FY2024/25 (in \$\$s)	FY2025/2026 (in \$\$s)
City-Funded Projects					
NW 89 th Pl (NW 23 st – 24 th Ter)	750,000				
Stormwater Master Plan Improvements (Various Locations)		1,000,000		1,000,000	
NW 78 th Av (12 th St – 15 th St)			250,000		
NW 33 rd St (87 th Av- 82 nd Av)			400,000		
88 th Av (13 th Terr - 15 th St)					175,000
115 th Av (31 rd Av- Doral Blvd)					600,000
TOTALS	750,000	1,000,000	650,000	1,000,000	775,000

Source: July 2021, City of Doral Public Works Department

E. Solid Waste

The City’s adopted Level of Service (LOS) standard for solid waste is 9.4 pounds per capita per day in Infrastructure Element Policy 5D.1.2 of the Comprehensive Plan. Table 8 below shows the projected solid waste which could be generated in the City through 2030 based on population projections. The city’s Green Master Plan does stress the need to reduce the amount of solid waste being sent to the landfill and increasing the capture rate of recyclable materials. Increasing the recycling rate would reduce the total pounds per capita per day.

Space Left Blank Intentionally

Table 8: Solid Waste Generation 2020-2030

YEAR	POPULATION	LOS (lbs./capita/day)	SOLID WASTE GENERATED (tons/day)
2020	71,746	9.4	335
2025	91,775	9.4	428
2030	98,868	9.4	461

Source: Iler Planning (2021)

The city has an interlocal agreement with Miami-Dade County Solid Waste Management for County collection, recycling and disposal of residential solid waste generated within Doral. Private businesses, industries, warehouses, and medical facilities utilize private waste management services that are not included in this analysis. According to the County’s Comprehensive Development Master Plan, there will be sufficient landfill capacity to serve future development county-wide through 2030. Miami-Dade County operates two (2) landfills located in Miami Gardens for the northern portion of the County and just south of Cutler Bay for the southern portion of the County. Covanta Waste Recovery Center is a recycling and waste to energy facility located in Doral.

Miami-Dade County enters into interlocal agreements with each municipality and services unincorporated areas for waste disposal and recycling services throughout the county. The County has prepared a Solid Waste Master Plan which identifies new activities, programs, facilities and technologies to provide sustainable solid waste services to ensure public health and environmental protection. The County’s Waste Management Master Plan identifies potential new technologies, operational efficiency, recycling, waste to energy and other methods to meet Miami-Dade County’s projected long-term needs.

Using the City’s projected annual solid waste generation for the years 2021-22 through 2025-2026, the City will average approximately 134,630 tons per year annually through the 5-year period. There will be sufficient landfill capacity to accommodate the City’s solid waste demand through 2026.

1. 5-Year Level-of-Service Solid Waste Projects

The County’s solid waste LOS will be maintained with the operation of the county-wide solid waste management system. The City should integrate, implement, and monitor waste vs recycling rates within Doral and consistent with the City’s Green Master Plan objectives and goals.

F. Parks and Recreation

The Level of Service (LOS) standard for Doral’s parks system is contained in Parks and Recreation Element Policy 7.1.1 which was amended in 2018 as follows:

- 2012-2014: 3.75 acres of developed park land per 1,000 population
- 2015-2020: 2.25 acres of developed public park land per 1,000 population
- 2021-future: 3.00 acres of developed public park land per 1,000 population

The Doral’s Parks System is shown in Figure 8. The City currently has 168 acres of developed parks. The Parks System LOS standard is increased in 2021 from 2.25 to 3.00 acres per 1000 population per the City’s

Comprehensive Plan. The annual projected park acreage needed through 2026 is presented in Table 9 below:

Table 9: Projected Parks Level-of-Service Acreage Needs

YEAR	PROJECTED POPULATION	PARK LOS NEED (Acres)	DEFICIT
2020	71,746	161*	+7
2021	79,702	239	-71
2022	82,342	247	-75
2023	84,047	252	-77
2024	85,753	257	-82
2025	91,775	275	-100
2026	93,505	280	-75.5**

* Previous Level-of-Service standard of 2.25 acres per 1000 population implemented.
 **The City will be adding 133 acres of new private parks with approved developments that is not calculated.
 Source: *Iler Planning and Doral staff (2021)*

1. 5-Year Level-of-Service Projects

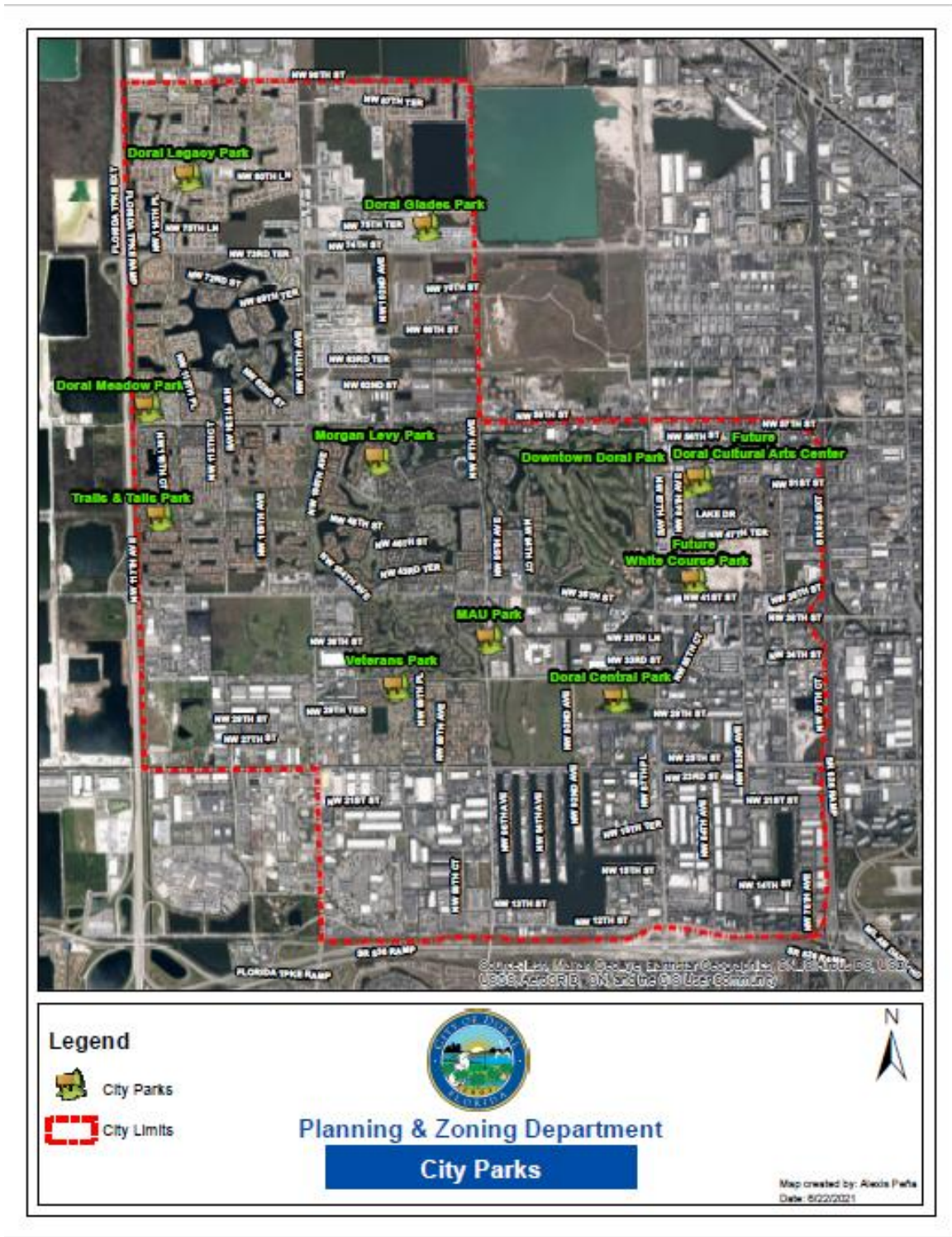
The planned park developments in FY 2021-2026 are shown in Table 10. Some of the projects are improvements to existing parks, however most represent new parkland acreage and thus will serve to increase the City’s future Parks LOS as follows:

	<u>Acres</u>	<u>Year Projected Completion</u>
Downtown Doral Cultural Center	1.3	2022
White Course Park	2.7	2022
PW - Flightway Retention Passive Park	3.0	2023
<u>Linear Greenway Park</u>	<u>29.5</u>	<u>2026</u>
Total New Park Areas.....	36.5 acres	

The city is projecting a deficiency to meeting their adopted LOS of 75.5 acres within the 5-year planning period of this CIE. City will need a total of 275 acres of public park land to meet the LOS in 2026; this will require an additional 75.5 acres of new parks. The combined planned parks projects within this CIE planning period will add an additional 36.5 acres of park land giving Doral a total of 204.5 acres within 5-years.

Space Left Blank Intentionally

Figure 8: Doral's Park System (2021)



Source: City of Doral Parks and Recreation, 2021

Table 10: Planned Parks Projects FY 2022-2026

PROJECT	LOCATION	ESTIMATED COMPLETION	SIZE (in Acres)
City:			
Downtown Doral Cultural Center	Adjacent to Downtown Doral Park	Q1 2022	1.3
White Course	North of NW 41 st St & west of NW 84 th Av	Q1 2022	2.7
PW – Flightway Retention Park	NW 102 nd Av. & NW 62 nd St.	Q4 2023	3.0
Doral Central Park	NW 87 th Ave. & 30 th St.	Q4 2023	82*
Linear Greenway Park	NW 50 th St. & NW 107 th Av.	Q3 2026	29.5
<u>Total Public Parks Added</u>			<u>65.5</u>
Private:			
Environmental Passive Park	NW 107 Ave. and NW 74 St.	Concurrent with development – Q3 2026	51
Grand Bay Preservation Park	NW 87 th St./NW 86 th St. (east of NW 107 th Ave.)	Concurrent with development – Q3 2026	72
<u>Total Private Parks Added</u>			<u>133</u>

Source: Doral Parks Department, 2021.

*Existing park acreage is undergoing major upgrades.

A detailed description of each proposed park improvement is provided below:

1. Doral Central Park – is an 82-acre park is the largest in Doral and home to major events such as EGGstravaganza and the Independence Day Celebration. Its open green spaces and scenic lake views are ideal for corporate gatherings and community events. Central Park is located in the community heart of Doral adjacent to the headquarters of Carnival Cruise Lines and the United States Southern Command. As part of the voter approved Parks Bond Referendum, this park will be redeveloped to include amenities such as a 70,000 square foot indoor recreation center, aquatic facility with competition and teaching pools, formal events lawn, basketball and tennis courts, playgrounds, and multi-purpose green spaces.
2. Downtown Doral Cultural Center – This project includes the construction of a 9,000 square foot Cultural Arts Center and surrounding park space on the 1.3 acre parcel adjacent to the City’s existing Downtown Doral Park. It will serve to celebrate the unique culture of Doral, as well as the variety of cultures, arts and experiences embraced by the City’s residents. The building will include a large art gallery space, flexible multi-purpose room, multiple outdoor courtyards, catering area, dedicated vehicular drop-off area and public restrooms.
3. Public Works – Flightway Retention Passive Park - This proposed park site is located on 102nd Avenue and theoretical NW 62nd Street. The site will be used as a retention area for the

Police/Public Works Building and adjacent Flightway project with 3 acres of the 5-acre city parcel dedicated as a passive park site. This park will include a stormwater retention area, walking trails, parking lot, landscaping and environmental observation being built by a private developer on public land and will be turned over to the city after construction.

4. Linear Greenway Park – Areas under FP&L transmission lines adjacent to streets are being used as multi-purpose trails as proposed in the City’s Bicycle Master Plan and Parks and Recreation Element Policy 6.2.6. Facilities and features include: multi-purpose trail/service access route with trailhead, naturalistic planted areas/native habitat plantings and public art. The linear park system comprises 41 acres.
5. White Course Park – The project consists of the development of a 2.7-acre parcel located within Downtown Doral South. Proposed amenities include a shaded playground, flexible event plaza, outdoor fitness stations, off-leash dog area, multi-purpose green space, restrooms, and picnic shelters.
6. Environmental Passive Park – This proposed private park site is (51 acres) located at NW 107th Avenue & 74th Street and contains wetlands. The site has been identified in the Parks System Master Plan as a future “Environmentally-Protected Park.” Low impact observation walkways on the perimeter of the wetlands and educational kiosks are planned.
7. Preservation Park – This proposed private park site (72 acres) is currently a highly-impacted wetland located between two residential developments. This natural resource would be restored transforming the site into a unique passive recreation amenity for the residents of Doral. The City’s goal is to make this preservation park a public access point; coordination with Miami-Dade County and the SFWMD will be required in the process.

2. Long-Term Planning

In 2021, the parks LOS standard increases to 3.00 acres per 1000 population per city council resolution. Figure 10 shows a net deficit of park land as the population of the city continues to increase unless new developments supply additional parks or the city adds additional park land. Unless new park lands are identified and improved over the next five (5) years, the City will have a park LOS deficiency of 75.5 acres by 2026. (A portion of the Police-Training facility site has been considered as a alternative for a portion of parks. Additional acreage may be added by improving land under high voltage power lines, future annexation areas st be located.)

G. Education Facilities

Public school facility planning for Doral is provided by Miami-Dade County Public Schools (MDCPS). Every year, MDCPS is required to update and submit a Five-Year District Facilities Work Plan to demonstrate available and projected student capacity, and related information on project funding for capacity-related projects. The information below summarizes the current and projected level of service (LOS) for public schools serving Doral from the current MDCPS Five-Year District Facilities Work Plan.

The City has seven (7) public schools located within its boundary. Table 11 provides the 2021 capacity and enrollment for these public schools. It shows that 2 of the 4 grades K-8 public schools in Doral are currently operating above 100% of permanent capacity. Ronald Reagan / Doral Senior High School is operating at 102% of capacity. Total enrollment in Doral’s public schools this year is 7,710 students. Also, Miami-Dade College operates the School for Advanced Studies at its campus in west Doral.

Table 11: Public School Capacity and Enrollment

PUBLIC SCHOOL	PERMANENT CAPACITY	STUDENT ENROLLMENT	% CAPACITY
Eugenia B. Thomas K-8 Center	1,421	1384	97%
John I. Smith K-8 Center	1,725	1351	78%
Ronald Reagan/ Doral Senior High School 9-12	1,767	2008	114%
Dr. Toni Bilbao Preparatory Academy K-8	675	677	100%
Dr. Rolando Espinosa K-8 Center	1,381	996	72%
J. C. Bermudez Doral Senior High School	400	279	70%
Andrea Castillo Preparatory Academy K-5	670	61	9%

Source: Miami-Dade County Public Schools, July 2021.

1. 5-Year Capacity Projects in Doral

Miami-Dade County Schools has four (4) school projects planned over the next five (5) years in the Doral area as listed below.

1. **J. C. Bermudez Doral SHS** - this school opened in the fall of 2020. The next phase is in design and includes the upgrading of the athletic fields. The subsequent phases are: the addition of a gymnasium, P.E. support spaces, and the construction of a 616-student station classroom addition.
2. **Dr. Toni Bilbao Preparatory Academy** - the middle school component (6-8 grade addition) is under construction and will add 454 additional student stations.
3. **Andrea Castillo Preparatory Academy** - the K-5 component opened in the fall of 2020. The middle school component (6-8 grade addition) is in the planning phase and will add 454 additional student stations.
4. **John I. Smith K-8** – the construction of a 176-student station classroom addition is in pre-design.

2. Charter and Private Schools

Doral is also home to 14 charter schools serving a total of 9,444 students in 2021 as shown in *Table 12* below.

Table 12: Enrollment and Capacity for Charter Schools in Doral

CHARTER SCHOOL	PERMANENT CAPACITY	STUDENT ENROLLMENT	% CAPACITY
Doral Academy K-5	1,395	1,035	92%
Just Arts and Management CMS		246	
Doral Academy Charter High School 9-12	3,943	1,813	101%
Doral Academy Charter Middle School 6-8		1,480	
Doral Academy of Technology 6-8		300	
Doral Performing Arts & Entertainment 9-12		403	
Renaissance Elementary K-5	900	906	100%
Renaissance Middle Charter School 6-8	650	452	70%
Doral International Academy of Math & Science K-8	900	829	92%
Downtown Doral Charter Elementary K-5	1,000	1,080	108%
Downtown Doral Charter Upper 6-12	1,300	900	69%
BridgePrep Academy K-8	1,650	TBD*	TBD*
Academir Charter School East	656	TBD*	TBD*

*School to open in fall 2021. No enrollment data available at this time.

Source: Based on October 2020 % Utilization Report, Miami-Dade County Public Schools and city staff July 2021.

Divine Savior Academy, Shelton Academy and Loyola are private schools which serve students in Doral.

End of Section II

III. CAPITAL IMPROVEMENTS

The data and analysis presented herein shows level of service (LOS) needs in transportation, parks and recreation, and stormwater management. Tables 14 and 15 below show the projected 5-year revenues and planned project expenditures for capital improvements in the City. The proposed Schedule of Capital Improvements (SCI) in Table 16 (pages 34-35) is intended to address the maintenance and improvement of public facilities including transportation, stormwater/drainage and parks in FY 2022-2026.

Table 13: Projected Revenues for Capacity-Related Projects by Funding Source

FUNDING SOURCES	FY 2021/22 (in \$\$s)	FY 2022/23 (in \$\$s)	FY 2023/24 (in \$\$s)	FY 2024/25 (in \$\$s)	FY 2025/26 (in \$\$s)	5 YEAR TOTAL FY 2022-2026 (in \$\$s)
Park Impact Fee Fund	260,000	265,200	270,504	275,914	281,432	1,353,050
Stormwater Fund	4,890,000	4,987,800	5,087,566	5,189,807	5,298,093	25,453,266
Transportation Fund	1,713,748	1,748,023	1,782,983	1,818,643	1,855,016	8,918,413
TOTALS	6,863,748	7,001,023	7,141,053	7,284,364	7,434,541	<u>35,724,729</u>

Source: City of Doral, July 2021

Table 14: Projected 5-Year Expenditures for Capital Improvements by Type

Project Type	FY2021/22 (in \$\$s)	FY2022/23 (in \$\$s)	FY2023/24 (in \$\$s)	FY2024/25 (in \$\$s)	FY2025/2026 (in \$\$s)	5-YEAR TOTAL FY 2022-2026 (in \$\$s)
City-Funded Projects						
Parks	5,400,000 ¹	0	0	0	0	5,400,000
Stormwater / Drainage	1,850,000	1,000,000	650,000	1,000,000	775,000	5,275,000
Transportation	3,061,250	3,350,000	4,100,000*	4,450,000**	4,250,000***	19,211,250
TOTALS	10,311,250	5,250,000	4,750,000	5,450,000	5,025,000	<u>29,886,250</u>

¹ Bond Project General Obligation (GO)

** \$3 million to be transferred from General Fund.

*** \$3.5 million to be transferred from General Fund.

Source: City of Doral, July 2021.

Revenue projections for capital projects (by type) to be funded by Doral are presented in Table 13. Table 14 summarizes the proposed expenditures for parks, stormwater/drainage and transportation based on the Schedule of Capital Improvements for FY 2022-2026.

An analysis of the projected revenues and planned capital expenditures indicate that overall City capital project revenues will exceed costs by \$6,704,729 over the next five (5) years. The City is projected to accumulate \$35,724,729 in revenues over the 5-year planning period to fund the capital improvements needed to maintain and improve public facility LOS, and has identified a total of \$29,020,000 in capital improvement projects over the planning period.

Capital Improvements Element Update

Table 15. Doral's Schedule of Capital Improvements 2021/22 - 2025/26

PROJECTS / LOCATION	TYPE OF WORK	FY 2021-22 (in \$\$s)	FY 2022-23 (in \$\$s)	FY 2023-24 (in \$\$s)	FY 2024-25 (in \$\$s)	FY 2025-26 (in \$\$s)	TOTAL COST FY 2022-2026	FUNDING SOURCE
TRANSPORTATION PROJECTS*								
1. Citywide (Milling and Resurfacing / Restriping)	Roadway Maintenance	100,000	0	300,000	0	300,000	695,000	PTP, TF
2. Landmark Community Complete Streets	Traffic Calming Improvements	0	1,500,000	0	0	0	1,500,000	TF
3. Citywide Traffic Calming	Traffic Calming Improvements	0	150,000	0	150,000	0	0	TF
4. NW 90 th St (Vacant Land Section 7)	Roadway Widening	0	0	0	0	250,000	250,000	TF
5. NW 102nd Av (76 St. to 86 St)	Roadway Widening	0	0	0	0	2,000,000	2,000,000	SWF, TF
6. Citywide Bus Shelters	Transit Mobility & Infrastructure	0	500,000	0	250,000	0	750,000	TF
7. NW 112 th Av & NW 114 th Av	Intersection Improvements	500,000	650,000	0	0		1,150,000	TF
8. NW 114 Av (34 th – 39 th St)	Roadway Improvements	0	0	1,500,000	0	0	1,500,000	SWF, TF
9. NW 34 th St (117 Av – 112 Av)	Roadway Improvements	0	1,500,000	0	0	0	1,500,000	SWF, TF
10. NW 117 Av (NW 25 th St – NW 34 th St)	Roadway Improvements	0	0	0	0	1,800,000	1,800,000	SWF, TF
11. Section 7 Traffic Calming	Roadway Improvements	200,000	0	0	0	0	200,000	TF
12. Citywide	Intersection Improvements	0	100,000	100,000	100,000	100,000	400,000	TF
13. Do Not Block Intersection	Roadway Improvements	0	0	0	0	100,000	100,000	TF
14. FPL Underground Power Lines	Roadway Improvements	0	0	600,000	0	0	600,000	TF
15. NW 33 St (NW 79 Av – 82 nd Av)	Roadway Reconstruction	0	0	1,500,000	0	0	1,500,000	SWF, TF
16. NW 99 Av (64 – 66 St) NW 102 Av (64 - 66 St) NW 66 St (102- 99 Av)	New Roadway Construction	1,500,000	0	0	0	0	1,500,000	SWF, TF
17. NW 112 Av (Land Acquisition)	New Roadway Construction	0	0	0	0	0	0	GF, TF
18. NW 112 Av (Roadway Construction)	New Roadway Construction	0	0	0	4,000,000	0	4,000,000	SWF, TF

Capital Improvements Element Update

PROJECTS / LOCATION	TYPE OF WORK	FY 2021-22 (in \$\$s)	FY 2022-23 (in \$\$s)	FY 2023-24 (in \$\$s)	FY 2024-25 (in \$\$s)	FY 2025-26 (in \$\$s)	TOTAL COST FY 2022-2026	FUNDING SOURCE
5 Year Transportation Cost Sub Total		2,295,000	4,250,000	4,000,000	4,350,000	4,550,000	19,445,000	

CITY PARKS PROJECTS**								
1. Doral Central Park		0	0	0	0	0	0	PKB
2. Downtown Doral South		0	0	0	0	0	0	PKB
3. Downtown Doral Cultural Arts Center		0	0	0	0	0	0	PKB
4. Trails and Tails Park		0	0	0	0	0	0	PKB
5. Trails Network		400,000	0	0	0	0	400,000	PKB
6. Pedestrian Bridge- Doral Blvd		5,000,000	0	0	0	0	5,000,000	SG
7. Flightway- Public Works Retention Park		Privately funded	Privately Funded	0	0	0	0	Privately Funded
Parks Cost Subtotal		5,400,000	00	0	0	0	5,400,000	
CITY STORMWATER PROJECTS**								
1. NW 89 th Pl (NW 23 rd St – 24 th Terr)	Stormwater Drainage	750,000					750,000	SWF
2. Stormwater Master Plan Improvements	Citywide Improvements		1,000,000		1,000,000		2,000,000	SWF
3. NW 78 th Av (12 th St – 15 th St)	Stormwater Drainage			250,000			250,000	SWF
4. NW 33 rd St (87 th Av – 82 nd Av)	Stormwater Drainage			400,000			400,000	SWF
5. NW 88 th Av (13 th Terr – 15 th St)	Stormwater Drainage					175,000	175,000	SWF
6. 115 th Av (31 nd Av - Doral Blvd)	Stormwater Drainage					600,000	600,000	SWF
Stormwater Cost Sub Total		750,000	1,000,000	650,000	1,000,000	775,000	4,175,000	
TOTAL CITY CAPITAL COST		8,445,000	5,250,000	4,650,000	5,350,000	5,325,000	29,020,000	

* Source: City of Doral Public Works Dept., July 2021.

** Source: City of Doral Public Works Dept., July 2021

Table Key:

TF: Transportation Fund

PKB- Parks Bonds

SG: State Appropriation for Stormwater Improvements

SWF: Stormwater Fund

GF: General Fund

PTP: Peoples Transportation Fund (CITT)