

WORK ORDER No. 3 FOR PROFESSIONAL SERVICES

TO: Stantec Consulting Services Inc.
901 Ponce de Leon Boulevard, Suite 900
Coral Gables, Florida 33134
(305) 445-2900

DATE: June 08, 2022

The City of Doral authorizes the firm of Stantec Consulting Services Inc. to provide professional engineering design services for the provision of design services and the development of construction plans as outlined in the Landmark Traffic Calming Study previously adopted by the Mayor and City Councilmembers. Where Stantec Consulting Services Inc. is a prequalified provider of professional engineering services selected in accordance with Consultant Competitive Negotiation Act (CCNA) requirements and approved by the City Council in December 2020 through Resolution 20-243. The work should be performed in accordance with the contract provisions contained in the Continuing Professional Services Agreement between Stantec Consulting Services Inc. and the City of Doral dated January 4, 2021, and the attached Proposal dated May 19, 2022; submitted by your firm for the above referenced project.

SCOPE OF SERVICES AND SCHEDULE:

The scope of the project will be as described in the attached proposal from Stantec Consulting Services Inc. dated May 19, 2022 for the provision of design services and the development of construction plans as outlined in the Landmark Traffic Calming Study previously adopted by the Mayor and City Councilmembers. The schedule requires the scope of work to be completed within 469 days of Notice to Proceed. All limitations of time set forth in this Work Order are of the essence. The performance of services associated with this Work Order will be executed on a time and material basis not to exceed the amount of \$177,880.00.

You are required by the Continuing Service Agreement to begin work subsequent to the execution of this Work Order, or as directed otherwise. If you fail to begin work subsequent to the execution of this Work Order, the City of Doral will be entitled to disqualify the Proposal and revoke the award.

Work Order incorporates the terms and conditions set forth in the Continuing Services Agreement dated January 4, 2021 between the parties as though fully set forth herein. In the event that any terms or conditions of this Work Order conflict with the Continuing Services Agreement, the provisions of this specific Work Order shall prevail and apply. Work Order is not binding until the City of Doral agrees and approves this Work Order.

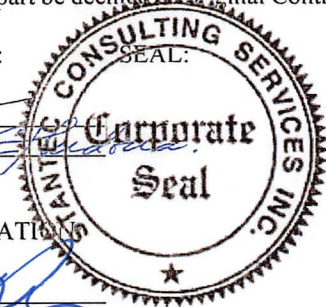
IN WITNESS WHEREOF, the parties hereto have executed this Agreement on the day and date first above written, in three (3) counterparts, each of which shall, without proof or accounting for the other counterpart be deemed an original Contract.

CONSULTANT: Stantec Consulting Services Inc.

BY: *Sean Compel*
NAME: Sean Compel, P.E.
TITLE: Principal

WITNESSES:

1. *[Signature]*
2. *[Signature]*



OWNER: City of Doral

BY: *Hernan M. Organvidez*
NAME: Hernan M. Organvidez
TITLE: Acting City Manager

AUTHENTICATION:

BY: *[Signature]*
NAME: Connie Diaz
TITLE: City Clerk

APPROVED AS TO FORM AND LEGAL SUFFICIENCY FOR THE SOLE USE OF THE CITY OF DORAL:

BY: *[Signature]*
NAME: Luis Figueredo, Esq
TITLE: City Attorney



901 Ponce de Leon, Suite 900
Coral Gables, Florida 33134

May 19, 2022

City of Doral
8401 NW 53 Terrace
Doral, Florida 33166

Attention: Ms. Rita Carbonell
Assistant Public Works Director

Reference: Landmark at Doral Traffic Calming
NW 66 St from NW 102nd Avenue to NW 107th Avenue
Pedestrian/Bicycle Safety of Shared-Use Path Crossings at NW 62nd Street, NW 66th Street, and NW 104th Path

Dear Ms. Carbonell,

We are pleased to present this proposal for professional engineering services for your consideration.

Scope of Project:

The City of Doral Public Works Department has received requests from residents of Landmark at Doral Community located at 6500 NW 105th Court, Doral, to install traffic calming devices along NW 66th Street between NW 102nd Avenue and NW 107th Avenue.

The city has also received a request to increase pedestrian/bicyclists safety at the crossings located at NW 62nd Street, NW 66th Street, and NW 104th Path along the existing shared-use path that runs parallel to NW 107th Avenue.

A traffic study was performed by A & P Consulting Transportation Engineer and recommendations were made in order to provide traffic calming along those areas.

For the purpose of this proposal, we assume that Miami-Dade County will accept the proposed options presented in the Traffic calming report.

Scope of Services:

Design Phase

Our scope of services is to use the recommendations given in the report prepared by others and provide plans for permitting with Miami-Dade County. Stantec will obtain a topographic and boundary survey for certain areas from our sub-consultant for use in our design (see attached proposal).

Scope will be as following:

1. **Signal Warrant Study at NW 66th Street and SW 104 Ave.**

Stantec will perform the following activities for the traffic signal study:



- **Traffic Data Collection:** The Consultant reviewed the Technical Memorandum for the Traffic Calming Request – Landmark at Doral Community. Traffic data will be utilized from this study; however, additional traffic data is needed for the purposes of the traffic signal study. Intersection Turning Movement Counts (TMC) will be collected at the intersection of NW 104th Avenue and NW 66th Street for a total of 8-hours (3 hours AM peak period, 2 hours midday peak period, and 3 hours PM peak period). The intersection TMCs will include bicycle and pedestrian data. Traffic data will be collected by a subconsultant – Quality Counts, LLC.
- **Traffic Data Analysis:** The Consultant shall determine intersection geometry, review local and nearby traffic signal timing and phasing, and conduct intersection operational analysis. A conditions diagram will be prepared depicting the intersection geometry. Signal timing and phasing preferences will be determined by reviewing nearby traffic signal operating plans from Miami-Dade County. Intersection operational analysis will be performed using Highway Capacity Manual methodologies. The time periods of the analysis will include AM, midday, and PM peak hours. It is expected that Miami-Dade County will accept the observations and issue identification documented in the Technical Memorandum for the Traffic Calming Request – Landmark at Doral Community. This will be utilized in the traffic signal study.
- **Safety Analysis:** The Consultant reviewed the Technical Memorandum for the Traffic Calming Request – Landmark at Doral Community and did not identify any crashes at the intersection which was for a period of 3 years. The Consultant will collect crash data at the intersection influence area for a period of 5 years and assess crash patterns related to traffic control. A collision diagram will be prepared. The crash analysis will be used for the signal warrant analysis.
- **Traffic Signal Warrant Summary:** The Consultant will prepare a traffic signal warrant summary based on the procedures and forms from MUTCD.
- **Traffic Signal Study Report:** A draft and final report will be developed documenting the effort.

Stantec will submit the traffic signal study to the City of Doral, and if requested, to the reviewing agency who will be Miami-Dade County. The Consultant will respond to comments for the study, as necessary.

2. NW 66th Street from NW 107th Avenue to NW 102nd Avenue

2.1 Install high emphasis crosswalk equipped with Pedestrian Rectangular Rapid Flashing Beacon solar powered at:

- NW 66th Street and NW 104th Path (some on-street parking will be eliminated)
- NW 66th Street between NW 103rd Pl and NW 102nd Path (some on-street parking will be eliminated).

2.2 Design Traffic Signal with pedestrian push button at the intersection of NW 66th Street and NW 104th Avenue, including traffic phasing plans.



2.3 Install shared lane markings (Sharrows) on both travel directions along NW 66th Street.

3. Segment NW 104th Path from NW 66th Street to Limestone Trail

Install Speed Humps for northbound and southbound travel directions

- 3.1 Midblock between NW 66th Street and NW 64th Lane.
- 3.2 Midblock between NW 64th Ln and south end of NW 104th Path

4. Segment NW 104th Avenue from NW 66th Street to NW 74th Street

4.1 Install Speed Limit Signs (30 MPH) for northbound and southbound traffic.

The design plans for this task will be performed on aerial photograph.

5. Shared Use Path crossing at NW 66th Street

5.1 Realign/Redesign shared use path so that pedestrians/bicyclists use the east crosswalk at the signalized intersection of NW 107th Avenue.

6. Shared Use Path crossing at NW 62nd Street

6.1 Install high emphasis crosswalk markings

6.2 Install Bicycle/Pedestrian (W11-15) sign, Trail Crossing Plaque (W11-15P), and Downward Diagonal Arrow Plaque (W16-7P) at the path crossing facing eastbound and westbound traffic (per MUTCD Chapter 9, Section 9B.18).

7. Shared Use Path crossing at Limestone Trail

7.1 Install high emphasis crosswalk equipped with Pedestrian/Bike Rectangular Rapid Flashing Beacon solar powered for the shared use path at the crossing at Limestone Trail.

Design phase tasks include utility investigation for the new signal at NW 66th St. & NW 104 Ave. (review of atlases, distribution of utility notification letters, obtaining as-builts from applicable/known utilities, and inputting the information into the plans), site visit including photo documentation of existing conditions. We anticipate submittals of 50% and 100% plans. Quantities and estimates of probable costs will be developed with each submittal for bidding and budgeting purposes.

8. Permitting Phase

Our services include assistance and coordination to have the plans reviewed and approved by Miami-Dade Public Works Department and Miami Dade Traffic and signals and signs division. Permit/review fees will be paid by the City of Doral.



9. **Procurement Phase:**

During this phase, Stantec will be available for general assistance as needed to assist the City in bid solicitation (bid/award phase). Stantec will assist in providing supplemental information/clarification of construction documents to prospective bidders during the bid solicitation. The procurement process will be led by the City. (Limited to 8 hours).

Exclusions

Roadway re-grading, reprofiling, profile views or reconstruction, maintenance of traffic/phasing plans, signal modification, structural or electrical design, operational approval, color renderings, certified arborist services, tree removal permit, asphalt cores, environmental engineering, landscaping, irrigation and lighting are not included in our scope

Construction phase services are currently not included in our scope, but a proposal can be provided as needed.

Terms and Conditions:

All terms and conditions shall be per our “Professional Engineering Services” contract dated January 4th, 2021, in accordance with RFQ #2020-22 GEC. Fees are time and material and will be billed as the work progresses. See attached breakdown.

1. Signal Warrant Study	\$16,725
2. NW66th Street from NW 107th Avenue to NW 102nd Avenue.....	\$104,105
3. NW 104th Path from NW 66th Street to Limestone Trail.....	\$ 7,545
4. NW 104th Avenue from NW 66th Street to NW 74th Street.....	\$ 4,375
5. Shared Use Path crossing at NW 66th Street).....	\$ 8,170
6. Shared Use Path crossing at NW 62nd Street.....	\$ 5,255
7. Shared Use Path crossing at Limestone Trail.....	\$16,435
8. Permitting Phase	\$13,870
9. Procurement Assistance	\$ 1,400

TOTAL \$177,880

Project Deliverables:

See attached schedule.

We are ready to begin working on this assignment upon your authorization to proceed. If acceptable to you, we will accept a signed copy of this form as your written authorization to proceed.



May 19, 2022
Ms. Rita Carbonell

Page 5 of 5

Thank you,

Stantec Consulting Services Inc.

A handwritten signature in blue ink that reads "Sean Compel".

Sean Compel, P.E., LEED AP
Principal
Tel: 305-445-2900
sean.compel@stantec.com

City of Doral

Approved by:

Signature

Print Name

Date

V:\2156\business_development\215681137 Sean Unassigned\city of doral\Traffic Calming\Proposal\City of Doral NW 66 St Traffic Calming.docx

Design with community in mind



901 Ponce de Leon Boulevard, Suite 900
Coral Gables, Florida 33134

SCHEDULE OF WORK

Landmark at Doral Traffic Calming City of Doral, Florida

<i>SCHEDULE OF WORK</i>		
<i>Task or Activity ID#</i>	<i>Task Name and/or Activity Description</i>	<i>Duration (Specify weeks, calendar or working days from NTP)</i>
1.0	Survey and Utility Investigation	NTP +8 Weeks
2.0	50% Submittal	NTP + 34 Weeks
3.0	City 50% Plans Review	2 Weeks
4.0	100% Submittal	NTP +62 Weeks
5.0	City 100% Plans Review	2 Weeks
6.0	100% Revised plans	NTP +67 Weeks
6.0	Miami Dade Traffic & Signal Permitting	8 Weeks **
7.0	100% Re-Submittal Miami Dade Traffic and signal	3 Weeks

** Approximate

FEE WORKSHEET

DATE: May 19, 2022

PROJECT: City of Doral
Landmark At Doral Traffic Calming

Signal Study at NW 66th Street & NW 104th Avenue	Principal	PM	Sr Eng	Project Eng.	Eng. Tech	Clerical
Signal Warrant Study	9	10	60	25		
Sub-Total Hours	9	10	60	25	0	0
Billing Rate	\$ 200.00	\$ 175.00	\$ 155.00	\$ 115.00	\$ 80.00	\$ 53.00
Labor Cost	\$1,800	\$1,750	\$9,300	\$2,875	\$0	\$0
Labor Sub-Total:						\$15,725
Traffic Data Collection Allowance						\$1,000
Traffic Study Total:						\$16,725

NW 66th Street from NW 107th Ave to NW 102 Ave	Principal	PM	Sr Eng	Project Eng.	Eng. Tech	Clerical
Utility Investigation and As-builts all segments						
Site Visit & Photo documentation all segments		4		6		
Pedestrian Rectangular Rapid Flashing Beacon Solar (Two locations)	8	3	12	80	100	
Traffic Signal at NW 66 St & NW 104 Ave	12	20	20	120	150	
Traffic Signal Electrical Service point	1		8		4	
Share Lane Markings both directions along NW 66 St		4	6	6	20	
Meeting with County & City Staff		12	12			
Key Sheet, Details and Notes		2	2	4	4	
Limited Pavement Marking		1		2	2	
Estimate of probable cost (2 total, 50%/100%)		1	8	8		
Sub-Total Hours	21	47	68	226	280	0
Billing Rate	\$ 200.00	\$ 175.00	\$ 155.00	\$ 115.00	\$ 80.00	\$ 53.00
Labor Cost	\$4,200	\$8,225	\$10,540	\$25,990	\$22,400	\$0
Labor Subtotal:						\$71,355

Survey: \$32,750

NW 66th Street from NW 107th Ave to NW 102 Ave Total: \$104,105

NW 104th Path From NW 66 Street to Limestone Trail	Principal	PM	Sr Eng	Project Eng.	Eng. Tech	Clerical
Speed hump Layout (Four)		2		10	24	
Pavement Marking & Signage		2		5	5	
Meeting with County & City Staff		3	3			
Summary of Quantities			2	6		
Estimate of probable cost (2 total, 50%/100%)		2		4		
Sub-Total Hours	0	9	5	25	29	0
Billing Rate	\$ 200.00	\$ 175.00	\$ 155.00	\$ 115.00	\$ 80.00	\$ 53.00
Labor Cost	\$0	\$1,575	\$775	\$2,875	\$2,320	\$0
NW 104th Path From NW 66 Street to Limestone Trail Subtotal:						\$7,545

NW 104th Avenue from NW 66 St to NW 74 St	Principal	PM	Sr Eng	Project Eng	Eng. Tech	Clerical
Install Speed limit on NW 104 Ave to NW 74 Street on Aerials		2		6	16	
Meeting with County & City Staff		2		2		
Summary of Quantities		1	2	1	2	
Estimate of probable cost (2 total, 50%/100%)		1	2	2		
Sub-Total Hours	0	6	4	11	18	0
Billing Rate	\$ 200.00	\$ 175.00	\$ 155.00	\$ 115.00	\$ 80.00	\$ 53.00
Labor Cost	\$0	\$1,050	\$620	\$1,265	\$1,440	\$0
NW 104th Avenue from NW 66 St to NW 74 St - Total:						\$4,375
Shared Used Path Crossing @ NW 66th Street & NW 107 Ave	Principal	PM	Sr Eng	Project Eng	Eng. Tech	Clerical
Realign and redesign Share use path to use NW 107 Ave Crosswalk		2	16	16	18	
Meeting with County & City Staff		2		2		
Summary of Quantities	1		2	2		
Estimate of probable cost (2 total, 50%/100%)	1		2	2		
Sub-Total Hours	2	4	20	22	18	0
Billing Rate	\$ 200.00	\$ 175.00	\$ 155.00	\$ 115.00	\$ 80.00	\$ 53.00
Labor Cost	\$400	\$700	\$3,100	\$2,530	\$1,440	\$0
Shared Used Path Crossing @ NW 66th Street & NW 107 Ave Total:						\$8,170
Shared Used Path Crossing @ NW 62nd Street	Principal	PM	Sr Eng	Project Eng	Eng. Tech	Clerical
High Emphasis crosswalk Markings		2		2	12	
Location of Bike signs per proposal		2		2	12	
Meeting with County & City Staff		2		2		
Summary of Quantities	1		2	2		
Estimate of probable cost (2 total, 50%/100%)	1		2	3		
Sub-Total Hours	2	6	4	11	24	0
Billing Rate	\$ 200.00	\$ 175.00	\$ 155.00	\$ 115.00	\$ 80.00	\$ 53.00
Labor Cost	\$400	\$1,050	\$620	\$1,265	\$1,920	\$0
Shared Used Path Crossing @ NW 62nd Street Total:						\$5,255

Shared Used Path Crossing at Limestone Trail	Principal	PM	Sr Eng	Project Eng.	Eng. Tech	Clerical
Solar Powered Pedestrian Rectangular Rapid Flashing Beacon	2	4	6	40	50	
Details & Notes		1	1	2	6	
Limited Pavement Marking & Signing		2		10	4	
Meeting with County & City Staff		2		2		
Summary of Quantities			2	8	6	
Estimate of probable cost (2 total, 50%/100%)			2	3		
Sub-Total Hours	2	9	11	65	66	0
Billing Rate	\$ 200.00	\$ 175.00	\$ 155.00	\$ 115.00	\$ 80.00	\$ 53.00
Labor Cost	\$400	\$1,575	\$1,705	\$7,475	\$5,280	\$0
Shared Used Path Crossing at Limestone Trail Total:						\$16,435
Permit Assistance Phase	Principal	PM	Sr Eng	Project Eng.	Eng. Tech	Clerical
Permit Assistance/submittal		6	8	12		
Address Agency Comments		8	20	30	45	
Sub-Total Hours	0	14	28	42	45	0
Billing Rate	\$ 200.00	\$ 175.00	\$ 155.00	\$ 115.00	\$ 50.00	\$ 53.00
Labor Cost	\$0	\$2,450	\$4,340	\$4,830	\$2,250	\$0
Permitting Assistance Total						\$13,870
Procurement Assistance Phase	Principal	PM	Sr Eng	Project Eng.	Eng. Tech	Clerical
General Assistant during procurement		8				
Sub-Total Hours	0	8	0	0	0	0
Billing Rate	\$ 200.00	\$ 175.00	\$ 155.00	\$ 115.00	\$ 50.00	\$ 53.00
Labor Cost	\$0	\$1,400	\$0	\$0	\$0	\$0
Procurement Assistance Total						\$1,400
Grand Total						\$177,880



Wednesday, May 18, 2022

VIA EMAIL: carlos.herdocia@stantec.com
LANDMARK AT DORAL TRAFFIC CALMING

Mr. Carlos M. Herdocia, PE, LEED AP
Project Manager



901 Ponce de Leon Boulevard, Suite 900
Coral Gables, FL 33134
786.502.0701

RE: Surveying and Mapping services for Landmark at Doral Traffic Calming, Doral, FL

Dear Mr. Herdocia,

Pursuant to your request regarding a fee estimate for Surveying and Mapping services for the above-referenced project, LONGITUDE SURVEYORS, LLC (LS) is pleased to submit the following proposal for your consideration.

A. Scope of Work – Topographic Survey:

- Longitude will perform a right-of-way analysis computing field evidence, plats, deeds, and other documentation relative to the project. All lot lines and ownership lines within the survey limits will be shown graphically. Information that is not available through public record will not be included unless otherwise provided with a Title Search document by the Client at time of Notice to Proceed (NTP).
- LS will establish horizontal and vertical control within the limits of the survey.
- The survey will be referenced to the Florida State Plane Coordinate System based on the North American Datum of 1983/2011 (NAD83/11).
- Elevations will be referenced to the National Geodetic Vertical Datum of 1929 (NGVD29).
- Longitude will provide a graphical baseline.
- LS will collect all of the following aboveground improvements; pavement, sidewalks, curb and gutters, parking spaces, bike lanes, medians, trees, palms, fences, signs, poles, fire hydrants, bollards, utility covers, valves/valve boxes, catch basins, manholes, fountains, planters, hedges and limits of shrubbery, guardrails, aboveground structures and utilities, overhead lines, etc.
- A Tree Survey will not be performed.
- Longitude will collect elevations equivalent to a one-hundred (100) foot grid on NW 66 Street (Item #1). Elevations will be collected equivalent to a twenty-five (25) foot grid in the four (4) areas along NW 66 Street as delineated by the Client with red squares on the attached Exhibit (Item #2).
- Elevations will be collected equivalent to a fifty (50) foot grid throughout the limits of the survey on NW 104 Path (Item #3) and at a twenty-five (25) foot grid in the two (2) areas along the southside of NW 104 Path as delineated by the Client with red squares on the attached Exhibit (Items #4 and #5).
- Elevations will include the crown of road, back of sidewalk and top of curb.
- LS will collect all existing drainage and sanitary information such as; rim elevation, pipe size, pipe material, pipe direction and inverts.

B. Survey Limits:

Landmark at Doral, along NW 66 Street from NW 107 Avenue to NW 102 Avenue, and along portions of NW 104 Path, from right-of-way to right-of-way, in Doral, FL 33178. See attached Exhibit provided by the Client.

C. Deliverables:

Longitude will provide a digitally signed PDF and CAD file of the resulting survey. Signed and sealed hardcopies can be provided upon request.

D. Time of Completion:

LS has estimated forty (40) business days from Notice to Proceed (NTP) to complete this task. Notice to Proceed (NTP) is considered effective twenty-four (24) hours after this proposal is signed and sent back to the undersigned.

E. Fee:

The total professional fee to complete the **Scope of Work** shall be a lump sum fee of **\$32,750.00**.



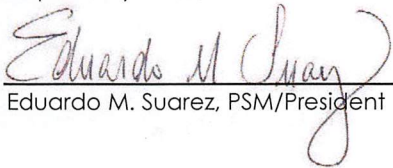
I understand and agree by signing below "I APPROVE AND ACCEPT" this proposal as a legal binding contract.

By: _____ Date: _____
(Authorized Signature)

(Typed or printed name) Title: _____

On behalf of the firm, I thank you for the opportunity to present this proposal. We look forward to utilizing our best professional efforts on your behalf on this very important project.

Respectfully Yours,



Eduardo M. Suarez, PSM/President

Traffic Calming

Landmark, City of Doral

Legend

Need more elevation on this areas
Cross sections every 25'

Proposed
Traffic Signal

#1
Survey for NW 66
Street form NW 107
Ave to NW 102 Ave
Cross section
elevations every
100'

Need survey this
areas elev every 50'
see next page for
clarification

Need survey
cross section
every 25'

NW 105 PL
NW 105 Ct
NW 104 Path
NW 104 PL

NW 103 Path
NW 102 Path

NW 66th St
NW 66th St & NW 102nd Ave

NW 69th terrace

NW 62nd St

Google Earth

800 ft



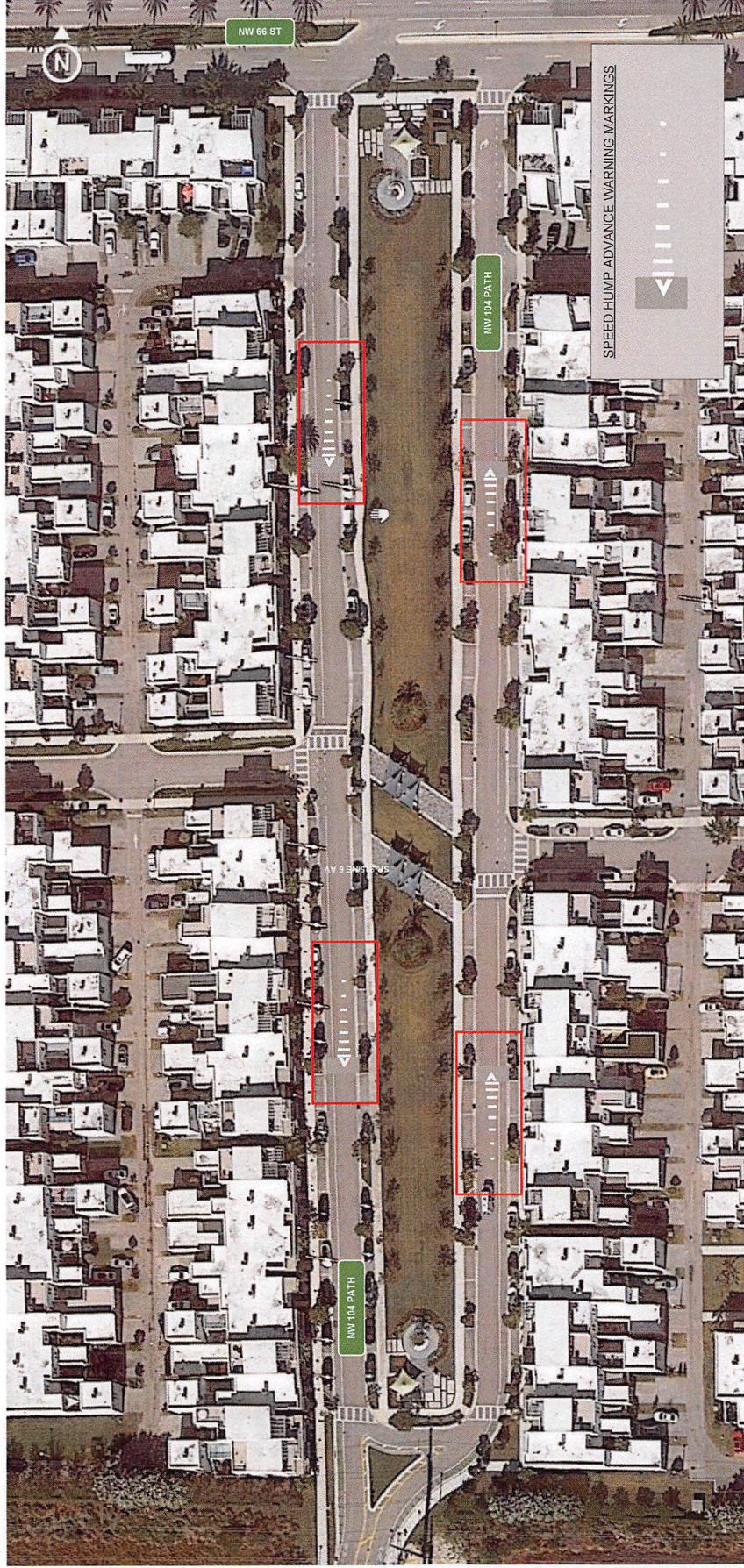


Figure 4. Speed Hump Advance Warning Markings

RESOLUTION No. 22-104

A RESOLUTION OF THE MAYOR AND THE CITY COUNCIL OF THE CITY OF DORAL, FLORIDA, APPROVING A WORK ORDER WITH STANTEC, INC. TO PROVIDE DESIGN SERVICES AND THE DEVELOPMENT OF CONSTRUCTION PLANS AS OUTLINED IN THE LANDMARK TRAFFIC CALMING STUDY IN AN AMOUNT NOT TO EXCEED \$177,880.00; PROVIDING FOR IMPLEMENTATION; AND PROVIDING FOR AN EFFECTIVE DATE

WHEREAS, throughout recent years the Public Works Department (PWD) has received numerous speeding concerns within the Landmark Community and

WHEREAS, as a result of these concerns, the PWD conducted a 7-day traffic speed data collection in May of 2019 on three (3) segments of City corridors within the Landmark Community: NW 66th Street from NW 107th Avenue to NW 104th Avenue, NW 66th Street from NW 104th Avenue to NW 102nd Avenue, and NW 104th Path from NW 66th Street to NW 107th Avenue; and

WHEREAS, the data collection revealed that the only segment that experienced a slight speeding condition was NW 66th Street east of NW 104th Avenue; and

WHEREAS, at the time of the data collection, the buildings adjacent to this segment were still under construction and in order to comply with Miami-Dade County (MDC) requirements, the data needed to be recollected after the construction was completed to account for normalized traffic patterns; and

WHEREAS, in September of 2020, the PWD once again received requests from residents of Landmark at Doral Community to install traffic calming devices to slow down vehicles along NW 66th Street between NW 102nd Avenue and NW 107th Avenue; and

WHEREAS, on February 2021, the PWD initiated the Landmark Traffic Calming

Study which included traffic data collection, crash analysis, public involvement, coordination with Miami-Dade County, as well an assessment of the two (2) pedestrians/bicycle shared use path crossings located at NW 66th Street east of NW 107th Avenue, and at NW 62nd Street east of NW 107th Avenue; and

WHEREAS, at the February 2021 Council Meeting, the Mayor and City Councilmembers approved Resolution No. 22-25 (approved 5-0) adopting the Landmark Traffic Calming Study; and

WHEREAS, the PWD requested a proposal from Stantec, Inc. to provide design engineering services as outlined in the adopted Landmark Traffic Calming Study; and

WHEREAS, staff respectfully requests authorization for the City Manager to execute Work Order No. 3 with Stantec, Inc. to provide design engineering services as outlined in the adopted Landmark Traffic Calming Study in an amount not to exceed \$177,880.00, a copy of which is attached as Exhibit "A"; and

WHEREAS, funding for this request is available in the current Fiscal Year in the Public Works Transportation Fund "Construction in Progress" Account, Account No. 101.80005.500650.

NOW, THEREFORE, BE IT RESOLVED BY THE MAYOR AND THE CITY COUNCIL OF THE CITY OF DORAL AS FOLLOWS:

Section 1. Recitals. The above recitals are true and correct and incorporated herein.

Section 2. Approval. The work order between the City and Stantec, Inc. to provide design engineering services as outlined in the adopted Landmark Traffic Calming Study in an amount not to exceed \$177,880.00 is hereby approved.

Section 3. Authorization. The City Manager is authorized to negotiate and execute the work order with Stantec, Inc. and expend budgeted funds on behalf of the City in furtherance hereof.

Section 4. Implementation. The City Manager and the City Attorney are hereby authorized to take such further action as may be necessary to implement the purpose and the provisions of this Resolution.

Section 5. Effective Date. This Resolution shall take effect immediately upon adoption.

The foregoing Resolution was offered by Councilmember Mariaca who moved its adoption. The motion was seconded by Councilmember Cabrera and upon being put to a vote, the vote was as follows:

Mayor Juan Carlos Bermudez	Yes
Vice Mayor Digna Cabral	Absent / Excused
Councilman Pete Cabrera	Yes
Councilwoman Claudia Mariaca	Yes
Councilman Oscar Puig-Corve	Yes

PASSED AND ADOPTED this 8 day of June, 2022.




JUAN CARLOS BÉRMUDEZ, MAYOR

ATTEST:



CONNIE DIAZ, MMC
CITY CLERK

APPROVED AS TO FORM AND LEGAL SUFFICIENCY
FOR THE USE AND RELIANCE OF THE CITY OF DORAL ONLY:



LUIS FIGUEREDO, ESQ.
CITY ATTORNEY