

RESOLUTION No. 15-218

**A RESOLUTION OF THE MAYOR AND THE CITY COUNCIL OF
THE CITY OF DORAL, FLORIDA, AMENDING THE CURRENT
OUTDOOR EVENT FEE SCHEDULE FOR PARKS; PROVIDING
FOR IMPLEMENTATION; AND PROVIDING FOR AN EFFECTIVE
DATE**

WHEREAS, the City Council approved the fee schedule for outdoor event fees at Doral Central Park during the May 8th, 2013 council meeting (Resolution No.13-46); and

WHEREAS, staff has received requests for outdoor events at various other park facilities; and

WHEREAS, in order to establish a fee schedule for outdoor events at other facilities and update the current fees for outdoor events, staff has revised the current outdoor event fee schedule; and

WHEREAS, Staff has recommended that the City Council amend the current outdoor event fee schedule and adopt the new fee schedule attached hereto as Exhibit "A" for city parks.

NOW, THEREFORE, BE IT RESOLVED BY THE MAYOR AND CITY COUNCIL OF THE CITY OF DORAL, FLORIDA, AS FOLLOWS:

Section 1. Recitals. The above recitals are confirmed, adopted, and incorporated herein and made a part hereof by this reference.

Section 2. Approval & Authorization. The City Council hereby approves the new fee schedule for outdoor events at city parks attached hereto as Exhibit "A".

Section 3. Implementation. The City Manager and the City Attorney are hereby authorized to take such action as may be necessary to implement the provisions of this Resolution.

Section 5. Effective Date. This resolution shall take effect immediately upon adoption.

The foregoing resolution was offered by Councilmember Ruiz who moved its adoption. The motion was seconded by Councilmember Cabrera and upon being put to a vote, the vote was as follows:

Mayor Luigi Boria	Yes
Vice Mayor Christi Fraga	Yes
Councilman Pete Cabrera	Yes
Councilwoman Ana Maria Rodriguez	Yes
Councilwoman Sandra Ruiz	Yes

PASSED and ADOPTED this 4 day of November, 2015



LUIGI BORIA, MAYOR

ATTEST:



CONNIE DIAZ, CITY CLERK

APPROVED AS TO FORM AND LEGAL SUFFICIENCY
FOR THE SOLE USE AND RELIANCE OF THE CITY OF DORAL:



WEISS, SEROTA, HELFMAN, COLE, & BIERMAN, PL
CITY ATTORNEY

EXHIBIT “A”

City of Doral Parks and Recreation Department

Outdoor Event Fees

Summary Sheet

All applicants must submit an Outdoor Event Permit to the Planning and Zoning Department before obtaining approval for an outdoor event to be held at one of our parks.

All Outdoor Event requests at our parks are subject to availability. Please see below for a list of fees.

All Outdoor Event requests at City Parks with a proposed attendance of more than 200 people must be submitted no less than 60 days in advance of the beginning date of the event.

Breakdown of Rental Rates							
Capacity	51 to 199	200 to 500	501 to 1,000	1,001 to 2,500	2,501 to 5,000	5,001 to 10,000	10,000 +
Rental Fee	\$175	\$225	\$425	\$875	\$1,225	\$1,900	\$2,400
Trash Container Disposal	\$0	\$0	\$0	\$250	\$250	\$250	\$250
Holding Tank Cleaning***	\$0	\$0	\$0	\$500	\$500	\$1,000	\$1,000
Janitorial Supplies	\$75	\$100	\$100	\$200	\$200	\$200	\$300
Staff Fees	TBD	TBD	TBD	TBD	TBD	TBD	TBD
TOTAL	\$250	\$325	\$525	\$1,825	\$2,175	\$3,350	\$3,950
<i>Additional Hour</i>	<i>\$25</i>	<i>\$50</i>	<i>\$100</i>	<i>\$200</i>	<i>\$300</i>	<i>\$400</i>	<i>\$500</i>
<i>Refundable Deposit</i>	<i>\$100</i>	<i>\$200</i>	<i>\$300</i>	<i>\$400</i>	<i>\$500</i>	<i>\$600</i>	<i>\$700</i>

*** Fees are based on events up to six (6) hours in duration. Events longer than six (6) hours will be charged the additional hour rate every hour after 6 hours.**

**** Rental hours include the time for set-up and breakdown.**

***** For Doral Central Park rentals only.**

****** An additional \$500 parking fee will be assessed to events that do not provide parking management.**

******* Staff costs will be determined once assigned staff is identified.**

******* Please see Resolution # _____ as reference.**

******* Additional fees from other departments may apply.**

City of Doral Parks and Recreation Department
Outdoor Event Fees
Non-For-Profit Organization Fee Waivers

- Non-profits (501 (c) (3)) with headquarters **located within** the City of Doral are eligible to receive a fee waiver for one (1) outdoor event per calendar year per organization. Non-profits must meet the following criteria in order to qualify for the fee waiver:

- 1) Headquarters of non-profit are in the City of Doral.
- 2) Proof of non-profit status must be provided.
- 3) Event is free to the public and benefits the Doral community.
- 4) An expected attendance of 150 people or less.

- Non-profits (501 (c) (3)) with headquarters **not located within** the City of Doral are eligible to receive a 50% discount for one (1) outdoor event per calendar year per organization. Non-profits must meet the following criteria in order to qualify for the discount:

- 1) Proof of non-profit status must be provided.
- 2) Event is free to the public.
- 3) An expected attendance of 150 people or less.

City of Doral Parks and Recreation Department

Outdoor Event Staff Rates

and Maintenance Fee Descriptions

The following outlines the breakdown of staff fees and fees associated with janitorial / waste disposal based on the proposed attendance of the outdoor event.

Staff Fees		
Position	Hourly Rate	
	Min	Max
Park Service Aide	\$11.00	\$15.40
Assistant Park Manager	\$16.69	\$25.03
Park Manager	\$18.72	\$28.07
Parks Maintenance Technician	\$18.72	\$28.07
Parks Maintenance Supervisor	\$23.29	\$36.11

51 to 1,000

Janitorial Supplies - Includes trash liners, toilet paper, litter control supplies, ant killer, and cleaning supplies.

1,001 to 10,000+

Trash Container Disposal - Disposal of trash after event.

Holding Tank Cleaning - Pumping of Holding tank after event.

Janitorial Supplies - Includes trash liners, toilet paper, litter control supplies, ant killer, and cleaning supplies.

Doral Central Park Rental Information

3000 NW 87th Avenue

Doral, Florida 33178

- 10,000+ person capacity (Capacity can be set by the Parks and Recreation Department)
- All of the parks amenities will remain open to public, regardless if they are attending the event or not.
- The use of outlets or any other source of power inside the park is prohibited. Organization must provide power for the event.
- Event parking cannot take place on surface lots. These lots must remain open for park visitors to use.

Rental Rate			
Capacity	Fees	Staffing	Refundable Deposit
51 to 199	\$250	TBD	\$100
200 to 500	\$325	TBD	\$200
501 to 1,000	\$525	TBD	\$300
1,001 to 2,500	\$1,825	TBD	\$400
2,501 to 5,000	\$2,175	TBD	\$500
5,001 to 10,000	\$3,350	TBD	\$600
10,000 +	\$3,950	TBD	\$700

Breakdown of Rental Rates							
Capacity	51 to 199	200 to 500	501 to 1,000	1,001 to 2,500	2,501 to 5,000	5,001 to 10,000	10,000 +
Rental Fee	\$175	\$225	\$425	\$875	\$1,225	\$1,900	\$2,400
Trash Container Disposal	\$0	\$0	\$0	\$250	\$250	\$250	\$250
Holding Tank Cleaning***	\$0	\$0	\$0	\$500	\$500	\$1,000	\$1,000
Janitorial Supplies	\$75	\$100	\$100	\$200	\$200	\$200	\$300
Staff Fees	TBD	TBD	TBD	TBD	TBD	TBD	TBD
TOTAL	\$250	\$325	\$525	\$1,825	\$2,175	\$3,350	\$3,950
<i>Additional Hour</i>	<i>\$25</i>	<i>\$50</i>	<i>\$100</i>	<i>\$200</i>	<i>\$300</i>	<i>\$400</i>	<i>\$500</i>

* Fees are based on events up to six (6) hours in duration. Events longer than six (6) hours will be charged the additional hour rate every hour after 6 hours.

** Rental hours include the time for set-up and breakdown.



Parking Zones



Rental Zones

Doral Meadow Park Rental Information

11555 NW 58th Street

Doral, Florida 33178

- 1,000 person capacity
- Vehicles cannot be driven into the facility to drop off supplies. Coordinator must transport supplies via hand truck or dolly.
- All of the parks amenities will remain open to public, regardless if they are attending the event or not.
- Parking lot roads must remain free of obstructions (cars, supplies, etc.) in order to maintain the flow of traffic.
- Loading zones cannot be used as parking spots in case of an emergency.
- Structures cannot be staked down due to irrigation lines around the park.
- The use of outlets or any other source of power inside the park is prohibited. Organization must provide power for the event.

Rental Rates (Soccer Field)			
Capacity	Fees	Staffing	Refundable Deposit
51 to 199	<i>Refer to the Parks and Department Athletic Field Rental Permit (See Exhibit A)</i>	TBD	\$100
200 to 500		TBD	\$200
501 to 1,000		TBD	\$300

Rental Rates (Baseball Field)			
Capacity	Fees	Staffing	Refundable Deposit
51 to 199	<i>Refer to the Parks and Department Athletic Field Rental Permit (See Exhibit A)</i>	TBD	\$100
200 to 500		TBD	\$200
501 to 1,000		TBD	\$300

Field preparation (including bases, chalking of foul lines, and water coolers for each dugout) is available for a \$20.00 surcharge per field.

Breakdown of Rental Rates			
Capacity	51 to 199	200 to 500	501 to 1,000
Rental Fee	See above	See above	See above
Janitorial Supplies	\$75	\$100	\$100
Staff Fees	TBD	TBD	TBD
TOTAL	\$250	\$325	\$525
<i>Additional Hour</i>	<i>\$25</i>	<i>\$50</i>	<i>\$100</i>

*Rental hours include the time for set-up and breakdown.

** Other fees apply (see 'Breakdown of Rental Rates')



Downtown Doral Park Rental Information

8395 NW 53rd Street

Doral, Florida 33166

- 1,000 person capacity
- Event must obtain approval from the Downtown Doral Community Association Board of Directors.
- Event must be family-friendly.
 - *Family-friendly is defined as something to offer to family members of every age and to every type of family.*
- Vehicles cannot be driven into the facility to drop off supplies. Coordinator must transport supplies via hand truck or dolly.
- All proposed events must be requested at least three (3) months in advance.
- All of the parks amenities will remain open to public, regardless if they are attending the event or not.
- Structures cannot be staked down due to irrigation lines around the park.
- The use of outlets or any other source of power inside the park is prohibited. Organization must provide power for the event.
- Parking plan must be provided at the time of application submittal and is subject to approval by other departments/parties.
- Only one (1) event per month will be permitted.
- Commercial activities within the Downtown Doral Park are prohibited without prior approval of the Association.

Rental Rate			
Capacity	Fees	Staffing	Refundable Deposit
51 to 199	\$250	TBD	\$100
200 to 500	\$325	TBD	\$200
501 to 1,000	\$525	TBD	\$300

Breakdown of Rental Rates			
Capacity	51 to 199	200 to 500	501 to 1,000
Rental Fee	\$175	\$225	\$425
Janitorial Supplies	\$75	\$100	\$100
Staff Fees	TBD	TBD	TBD
TOTAL	\$250	\$325	\$525
<i>Additional Hour</i>	<i>\$25</i>	<i>\$50</i>	<i>\$100</i>

*Fees are based on events up to six (6) hours in duration. Events longer than six (6) hours will be charged the additional hour rate every hour after 6 hours.

**Rental hours include the time for set-up and breakdown.



Morgan Levy Park Rental Information

5300 NW 102nd Avenue

Doral, Florida 33178

- 1,000 person capacity
- Vehicles cannot be driven into the facility to drop off supplies. Coordinator must transport supplies via hand truck or dolly.
- All of the parks amenities will remain open to public, regardless if they are attending the event or not.
- Parking lot roads must remain free of obstructions (cars, supplies, etc.) in order to maintain the flow of traffic.
- Loading zones cannot be used as parking spots in case of an emergency.
- Structures cannot be staked down due to irrigation lines around the park.
- The use of outlets or any other source of power inside the park is prohibited. Organization must provide power for the event.

Rental Rate			
Capacity	Fees	Staffing	Refundable Deposit
51 to 199	<i>Refer to the Parks and Department Athletic Field Rental Permit (See Exhibit A)</i>	TBD	\$100
200 to 500		TBD	\$200
501 to 1,000		TBD	\$300

Breakdown of Rental Rates			
Capacity	51 to 199	200 to 500	501 to 1,000
Rental Fee	See above	See above	See above
Trash Container Disposal	\$0	\$0	\$0
Holding Tank Cleaning***	\$0	\$0	\$0
Janitorial Supplies	\$75	\$100	\$100
Staff Fees	TBD	TBD	TBD
TOTAL	\$250	\$325	\$525
<i>Additional Hour</i>	<i>\$25</i>	<i>\$50</i>	<i>\$100</i>

*Rental hours include the time for set-up and breakdown.

**Other fees apply (see 'Breakdown of Rental Rates')



Trails and Tails Park Rental Information

11645 NW 50th Street

Doral, Florida 33178

- 199 person capacity
- Vehicles cannot be driven into the facility to drop off supplies. Coordinator must transport supplies via hand truck or dolly.
- All of the parks amenities will remain open to public, regardless if they are attending the event or not.
- Parking lot roads must remain free of obstructions (cars, supplies, etc.) in order to maintain the flow of traffic.
- Loading zones cannot be used as parking spots in case of an emergency.
- Structures cannot be staked down due to irrigation lines around the park.
- The use of outlets or any other source of power inside the park is prohibited. Organization must provide power for the event.
- No structure can exceed fourteen (14) feet in height.

Rental Rate			
Capacity	Fees	Staffing	Refundable Deposit
51 to 199	\$250	TBD	\$100

Breakdown of Rental Rates	
Capacity	51 to 199
Rental Fee	\$175
Trash Container Disposal	\$0
Holding Tank Cleaning***	\$0
Janitorial Supplies	\$75
Staff Fees	TBD
TOTAL	\$250
<i>Additional Hour</i>	<i>\$25</i>

* Fees are based on events up to six (6) hours in duration. Events longer than six (6) hours will be charged the additional hour rate every hour after 6 hours.

** Rental hours include the time for set-up and breakdown.

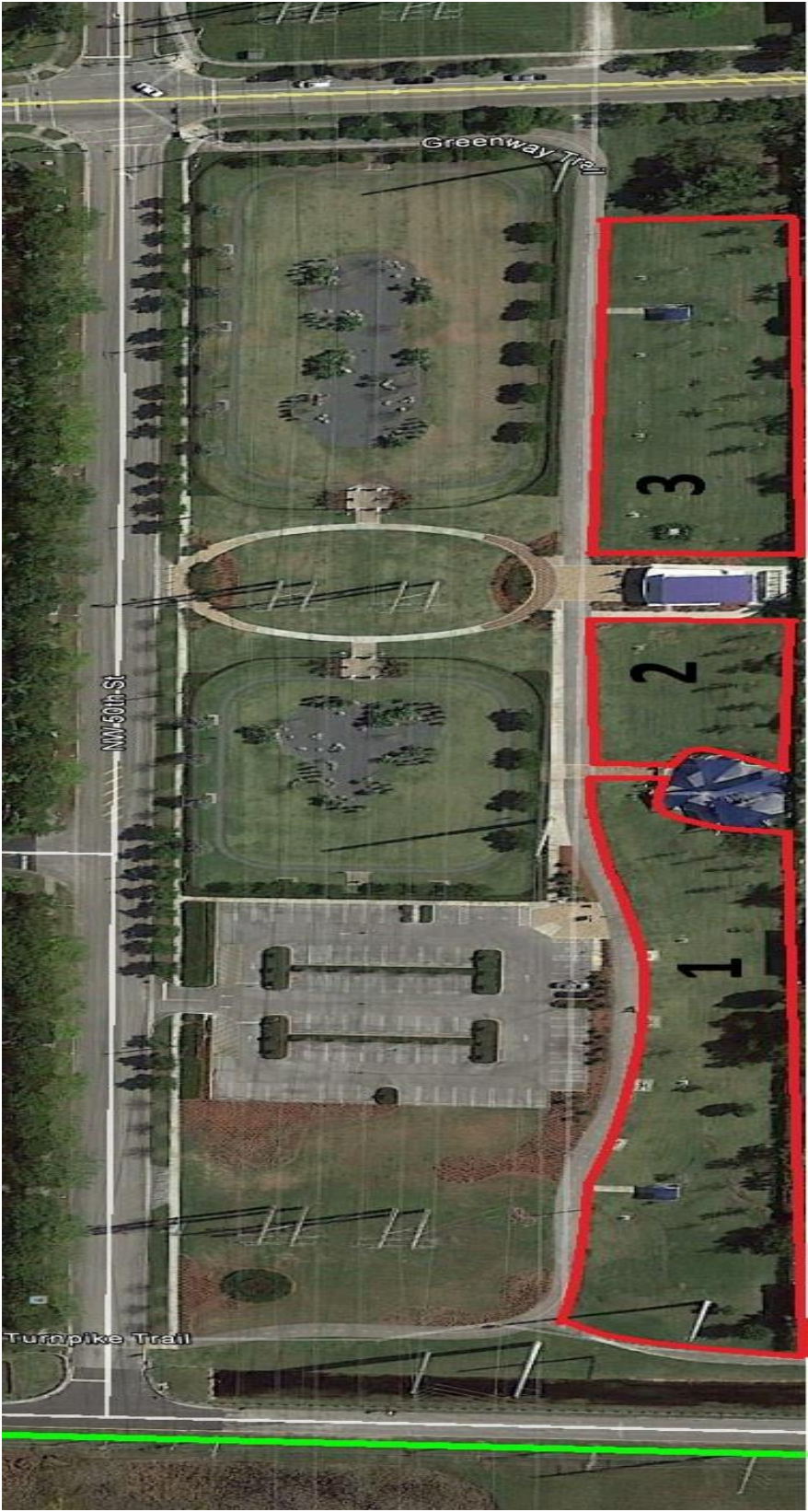


Exhibit A

Parks and Recreation

Department Athletic Field

Rental Permit