



CITY OF DORAL
PUBLIC WORKS DEPARTMENT
8401 NW 53rd Terrace
DORAL, FLORIDA 33166
Ph. (305)593-6740
Fax (305) 593-6617

WORK AUTHORIZATION FOR CONTRACTUAL SERVICES

TO: H & R Paving, Inc.
1955 NW 110th Avenue
Miami, FL 33172
305-261-3005
305-592-6079 FAX

DATE: February 11, 2019

WORK ORDER No. 18-07 (ITB #2016-43)

TOTAL AMOUNT: \$50,328.03 (Not to exceed)

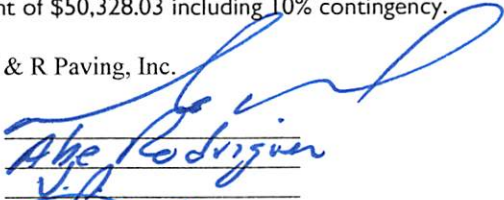
PROJECT SCOPE OF WORK: The City of Doral authorizes the firm of H & R Paving, Inc., to proceed with the "Do Not Block The Box" pavement marking at the following locations and as per the attached exhibits. Work is to be performed along the following intersections, NW 79th Avenue at NW 41st Street, NW 82nd Avenue at NW 12th Street, NW 82nd Avenue at NW 36th Street, NW 84th Avenue at NW 12th Street, NW 8400 Block at NW 36th Street, NW 87th Avenue at NW 13th Terrace, NW 87th Avenue at NW 1400 Block, NW 87th Avenue at NW 17th Street, NW 87th Avenue at NW 27th Street, NW 87th Avenue at NW 58th Street, NW 107th Avenue at NW 14th Street, NW 107th Avenue at NW 17th Street, NW 107th Avenue at NW 27th Street as provided by the City's Public Works Department, in accordance with the terms, conditions and specifications of the Contract Documents, (ITB#2016-43) "Milling and Resurfacing of Bituminous Paving, Miscellaneous Stormwater Improvement" Agreement. All road construction and repairs will comply with Miami-Dade County Public Works Manual Part 2 Design and Construction Section 51, Limerock Base, Section 100, Prime and Tack Coats, Section 132, Asphaltic Concrete Binder Course, Section 133, Type S-1 Asphaltic Concrete Surface Course.


If Contractor fails to execute said Work Order in a timely manner and complete all work within 30 calendar days from the time this work order is executed, the City of Doral will be entitled to disqualify the Proposal, and revoke the award.

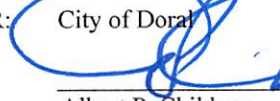
The performance of services associated with this Work Order will be executed on a 'Line Item' basis with a not to exceed amount of \$50,328.03 including 10% contingency.

Contractor: H & R Paving, Inc.

WITNESSES: SEAL:


BY: 
NAME: Alberto Rodriguez
TITLE: _____

1. 
2. _____

OWNER: City of Doral
BY: 
NAME: Albert P. Childress
TITLE: Acting City Manager

AUTHENTICATION: 
BY: _____
NAME: Connie Diaz
TITLE: City Clerk

APPROVED AS TO FORM AND
LEGAL SUFFICIENCY FOR THE SOLE USE
OF THE CITY OF DORAL:

BY: 
NAME: Luis Figueredo, ESQ.
TITLE: City Attorney

Item	Description	Unit	QTY	Unit Price	Cost
1	Mobilization-Demobilization (Emergency Repairs)(Includes dust control methods)	EA		\$ 1.00	\$ -
2	Maintenance of Traffic (Emergency Repairs)(Includes traffic control, pedestrian and vehicle access, signs, barricades, and flagger, as per FDOT Standards, lighting, and steel plates if required)	EA		\$ 1.00	\$ -
3	Mobilization-Demobilization (Milling and Resurfacing Projects)(Includes dust control methods)	EA		\$ 1.00	\$ -
4	Maintenance of Traffic (Milling and Resurfacing Projects)(Includes traffic control, pedestrian and vehicle access, signs, barricades, and flagger, as per FDOT Standards, lighting, and steel plates if required)	EA		\$ 450.00	\$ -
5	Mobilization-Demobilization (Pavement Marking and Signage Projects)(Scope of work: existing pavement marking removal, pavement markings, rpms, etc.)	EA	5	\$ 1.00	\$ 5.00
6	Maintenance of Traffic (Pavement Marking Projects)(Includes traffic control, pedestrian and vehicle access, signs, barricades, and flagger, as per FDOT Standards, lighting, and steel plates if required)	EA	5	\$ 1.00	\$ 5.00
7	Mobilization-Demobilization (Concrete Projects)(Includes dust control methods)(Scope of work: removal of existing concrete features, installation of new concrete features)	EA		\$ 1.00	\$ -
8	Maintenance of Traffic (Concrete Projects)(Includes traffic control, pedestrian and vehicle access, signs, barricades, and flagger, as per FDOT Standards, lighting, and steel plates if required)	EA		\$ 450.00	\$ -
9	Mobilization-Demobilization (Stormwater Improvements Project)(Includes dust control methods)(Scope of work: repairs of existing features, installation of new features)	EA		\$ 1.00	\$ -
10	Maintenance of Traffic (Stormwater Improvements Project)(Includes traffic control, pedestrian and vehicle access, signs, barricades, and flagger, as per FDOT Standards, lighting, and steel plates if required)	EA		\$ 450.00	\$ -
11	Remove existing Sidewalk (4" thick, 6" thick at driveways)(Includes removal of handicap ramps, meter/valve box adjustment, and disposal of materials)	SF		\$ 2.00	\$ -
12	Construct new sidewalk (4" thick, 6" thick at driveway)(Includes cut and fill, sub-grade prep., ADA compliant handicap ramps, etc.)	SF		\$ 4.50	\$ -
13	Curb Ramp Detectable Warning Surface (to install on ADA compliant curb ramp)	SF		\$ 25.00	\$ -
14	Root pruning under existing sidewalk (Perpendicular length of sidewalk)(Includes disposal of material)	LF		\$ 1.00	\$ -
15	Remove Existing Curb & Gutter, Valley Gutter, Traffic Separator (Includes Disposal of Material)	LF		\$ 5.00	\$ -
16	Construct Concrete Traffic Separator	SF		\$ 10.00	\$ -
17	Construct New Type A Concrete Curb (as per FDOT Standards)(Includes sub-grade material and prep.)	LF		\$ 10.00	\$ -
18	Construct New Type B Concrete Curb (as per FDOT Standards)(Includes sub-grade material and prep.)	LF		\$ 10.00	\$ -
19	Construct New Type D Concrete Curb (as per FDOT Standards)(Includes sub-grade material and prep.)	LF		\$ 25.00	\$ -
20	Construct New Type E Median Curb (as per FDOT Standards)(Includes sub-grade material and prep.)	LF		\$ 25.00	\$ -
21	Construct New Type F Curb & Gutter (as per FDOT Standards)(Includes sub-grade material and prep.)	LF		\$ 30.00	\$ -
22	Construct New Drop Curb (as per FDOT Standards)(Includes sub-grade material and prep.)	LF		\$ 10.00	\$ -
23	Grading of Grass Swale Area	SF		\$ 0.50	\$ -
24	Removal of Existing Drainage Structure (Includes removal and disposal of material)	EA		\$ 500.00	\$ -
25	Installation of Type P Drainage Structure	EA		\$ 3,500.00	\$ -
26	Furnish and Install Exfiltration Trench - 18" Perforated HDPE Pipe (4' wide trench)(Includes asphalt removal, excavation, backfill, sub-grade backfill material, lime rock base, disposal of excess, and trench temporary restoration)	LF		\$ 100.00	\$ -
27	Furnish and Install Exfiltration Trench - 24" Perforated HDPE Pipe (4' wide trench)(Includes asphalt removal, excavation, backfill, sub-grade backfill material, lime rock base, disposal of excess, and trench temporary restoration)	LF		\$ 110.00	\$ -
28	Furnish and Install 15" Solid-Wall HDPE Pipe (Includes asphalt removal, excavation, backfill, sub-grade backfill material, lime rock base, disposal of excess, and trench temporary restoration)			\$ 50.00	\$ -
29	Furnish and Install 18" Solid-Wall HDPE Pipe (Includes asphalt removal, excavation, backfill, sub-grade backfill material, lime rock base, disposal of excess, and trench temporary restoration)	LF		\$ 50.00	\$ -
30	Furnish and Install 24" Solid-Wall HDPE Pipe (Includes asphalt removal, excavation, backfill, sub-grade backfill material, lime rock base, disposal of excess, and trench temporary restoration)	LF		\$ 50.00	\$ -
31	Core Drill, Tie & Seal to Existing Drainage Structure	EA		\$ 200.00	\$ -
32	Furnish and Install Pollution Baffles / Skimmer	EA		\$ 200.00	\$ -

33	Furnish and Install Sediment Barrier (Silt Fence)	LF		\$ 1.00	\$ -
34	Adjust Manhole	EA		\$ 1.00	\$ -
35	Adjust Valve Boxes	EA		\$ 1.00	\$ -
36	Seal Existing Pipe Connections	EA		\$ 50.00	\$ -
37	Flowable Fill	CY		\$ 150.00	\$ -
38	Regular Excavation	CY		\$ 1.00	\$ -
39	Embankment	CY		\$ 1.00	\$ -
40	Type B Stabilization	CY		\$ 2.00	\$ -
41	Rework Limerock Base, 3"	SY		\$ 2.00	\$ -
42	Optional Base, Base Group 6	SY		\$ 18.00	\$ -
43	Optional Base, Base Group 11	CY		\$ 20.00	\$ -
44	Coral Rock Limerock LBR 40	TN		\$ 20.00	\$ -
45	Milling Existing Asphalt Pavement, 1" Ave. Depth	SY		\$ 2.00	\$ -
46	Milling Existing Asphalt Pavement, 2" Ave. Depth	SY		\$ 0.50	\$ -
47	Asphalt Leveling Course	TN		\$ 80.00	\$ -
48	Superpave Asphaltic Concrete, Traffic B, SP-9.5	TN		\$ 110.50	\$ -
49	2" S-3 Bituminous Overlay	TN		\$ 100.00	\$ -
50	Exploratory Excavation: JD310 or Equal w/Operator	HR		\$ 40.00	\$ -
51	Exploratory Excavation: JD310 or Equal w/Operator	CY		\$ 1.00	\$ -
52	Exploratory Excavation: 2-man Labor Crew	HR		\$ 40.00	\$ -
53	Exploratory Excavation: 2-man Labor Crew	CY		\$ 1.00	\$ -
54	Furnish and Install Sod	SY		\$ 5.00	\$ -
55	Tree Relocation Specimen (Tree Trunk diameter < 12 in., DBH)	EA		\$ 850.00	\$ -
56	Tree Relocation Specimen (Tree Trunk diameter > 12 in., DBH)	EA		\$ 1,500.00	\$ -
57	Existing Thermoplastic Striping/Markings Removal	SF		\$ 2.40	\$ -
58	Retro-reflective Pavement Markers (yellow)	EA		\$ 3.60	\$ -
59	Retro-reflective Pavement Markers (white)	EA		\$ 3.60	\$ -
60	Retro-reflective Pavement Markers (blue)	EA		\$ 3.60	\$ -
61	Painted Pavement Marking, Standard, White, Solid, 6"	EA	2,888	\$ 0.24	\$ 693.12
62	Painted Pavement Marking, Standard, White, Solid, 8"	EA	4,291	\$ 0.96	\$ 4,119.12
63	Painted Pavement Marking, Standard, White, Solid, 12"	LF		\$ 0.96	\$ -
64	Painted Pavement Marking, Standard, White, Solid, 18"	LF		\$ 1.20	\$ -
65	Painted Pavement Marking, Standard, White, Solid, 24"	LF		\$ 1.20	\$ -
66	Painted Pavement Marking, Standard, White, Skip, 6" (10'-30')	LF		\$ 0.24	\$ -
67	Painted Pavement Marking, Standard, White, Dotted/Guideline/6-10 GAP, Ext 6"	LF		\$ 0.24	\$ -
68	Painted Pavement Markings, Standard, White, Message	EA		\$ 36.00	\$ -
69	Painted Pavement Markings "SHARROW" and Bicycle Pavement Markings	EA		\$ 360.00	\$ -
70	Painted Pavement Markings, Standard, White, Arrow	EA		\$ 24.00	\$ -
71	Painted Pavement Marking, Standard, Yellow, Solid, 6"	LF		\$ 0.24	\$ -
72	Painted Pavement Marking, Standard, Yellow, Solid, 18"	LF		\$ 0.96	\$ -
73	Painted Pavement Marking, Standard, Yellow, Skip, 6" (10'-30')	LF		\$ 0.24	\$ -
74	Painted Pavement Marking, Standard, Yellow, Skip, 6" (2'-4')	LF	1,109	\$ 1.20	\$ 1,330.51
75	Thermoplastic, Standard, White, Solid, 6"	LF		\$ 0.84	\$ -
76	Thermoplastic, Standard, White, Solid, 8"	LF		\$ 1.20	\$ -
77	Thermoplastic, Standard, White, Solid, 12"	LF		\$ 2.04	\$ -
78	Thermoplastic, Standard, White, Solid, 18"	LF		\$ 3.60	\$ -
79	Thermoplastic, Standard, White, Solid, 24"	LF		\$ 3.60	\$ -
80	Thermoplastic, Standard, White, Skip, 6" (10'-30')	LF		\$ 0.84	\$ -
81	Thermoplastic, Standard, White, Dotted/Guideline/6-10 GAP, Ext 6"	LF		\$ 1.14	\$ -
82	Thermoplastic, Standard, White, Message	EA		\$ 144.00	\$ -
83	Thermoplastic "SHARROW" and Bicycle Pavement Markings	EA		\$ 360.00	\$ -
84	Thermoplastic, Standard, White, Arrow	EA		\$ 72.00	\$ -
85	Thermoplastic, Standard, Yellow, Solid, 6"	LF		\$ 0.84	\$ -
86	Thermoplastic, Standard, Yellow, Solid, 18"	LF		\$ 3.60	\$ -
87	Thermoplastic, Standard, Yellow, Skip, 6" (10'-30')	LF		\$ 0.84	\$ -
88	Thermoplastic, Standard, Yellow, Skip, 6" (2'-4')	LF		\$ 1.14	\$ -
89	Reflective Paint (Island Nose) Yellow	SF		\$ 2.40	\$ -
90	Patterned Pavement, Vehicular Areas - Green Bike Lane (FDOT Item No. 0523-1-3)	SY		\$ 30.25	\$ -
91	Single Sign Post, F&I	EA	110.00	\$ 360.00	\$ 39,600.00
92	Replace Existing Traffic Loop	EA		\$ 1,800.00	\$ -
93	Off-Duty Police Officer	HR		\$ 60.00	\$ -

Subtotal	\$	45,752.76
10% Contingency	\$	4,575.28
Total	\$	50,328.03

PREPARED FOR:



CITY OF DORAL
PUBLIC WORKS DEPARTMENT
8401 NW 53RD TERRACE
DORAL, FL 33166
TEL: (305) 593-6740
FAX: (305) 406-6737

TWO #2 - DO NOT BLOCK THE BOX AT
13 INTERSECTIONS

INDEX OF SHEETS:

Table with 2 columns: SHEET NO. and SHEET DESCRIPTION. Lists sheets 5-1 through 5-15 and their corresponding descriptions.

CITY COUNCIL:

MAYOR: JUAN CARLOS BERMUDEZ
VICE MAYOR: CLAUDIA MARIACA
COUNCILMAN: PETE CABRERA
COUNCILWOMAN: CHRISTI FRAGA
COUNCILWOMAN: ANA MARIA RODRIGUEZ

PREPARED BY:



PEVIDA HIGHWAY DESIGNERS
8600 NW 17TH ST, SUITE 160
DORAL, FL 33126
TEL: (786) 228-5666
FAX: (786) 558-2030
WWW.PEVIDAHIGHWAYDESIGNERS.COM



SHOP DRAWINGS TO
BE SUBMITTED TO EOR

SIGNING AND
PAVEMENT MARKING PLANS
ENGINEER OF RECORD:

WALFRIDO J. PEVIDA
P.E. NO: 51472

CITY OF DORAL PROJECT MANAGER:
EUGENE COLLINGS-BONFILL, P.E.



NTS



CITY OF
DORAL

PALMETTO EXWY

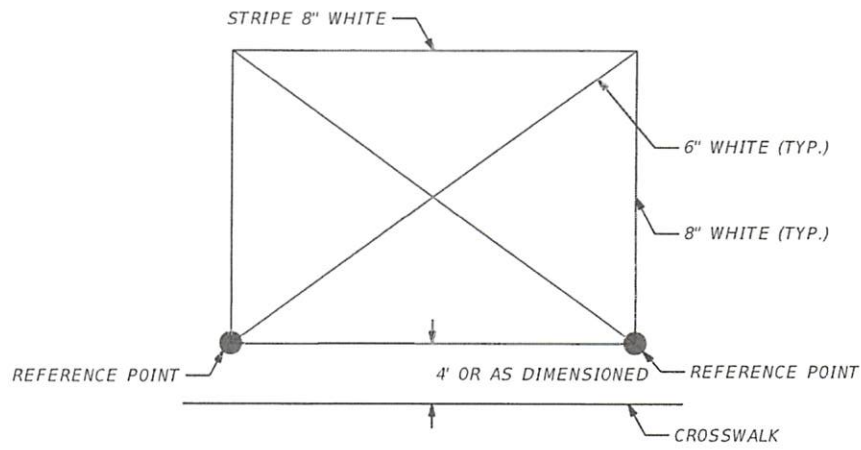
DOLPHIN EXWY

SUMMARY OF PAVEMENT MARKING QUANTITIES

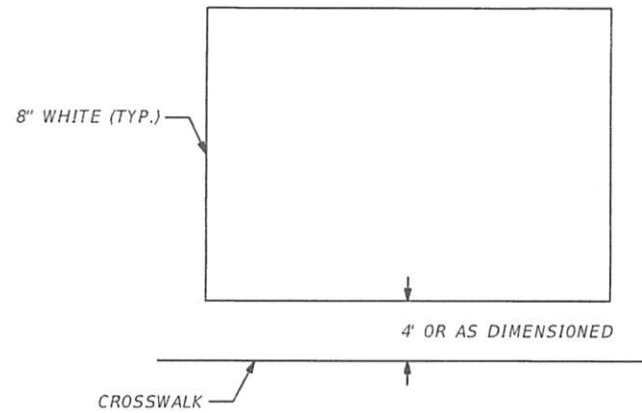
Table with 3 columns: ITEM NO., DESCRIPTION, and QTY. Lists quantities for 'DO NOT BLOCK SIGNS', 'DON'T BLOCK THE BOX', '8" WHITE', and '6" WHITE'.



CITY OF DORAL



OPTION 1



OPTION 2

PAVEMENT MARKING DETAIL (DO NOT BLOCK BOX)
(N.T.S)

12/10

NOTE

1. REFERENCE POINT IS LOCATED 4' FROM THE EDGE OF CROSSWALK OR AS DIMENSIONED IN PLAN SHEET.

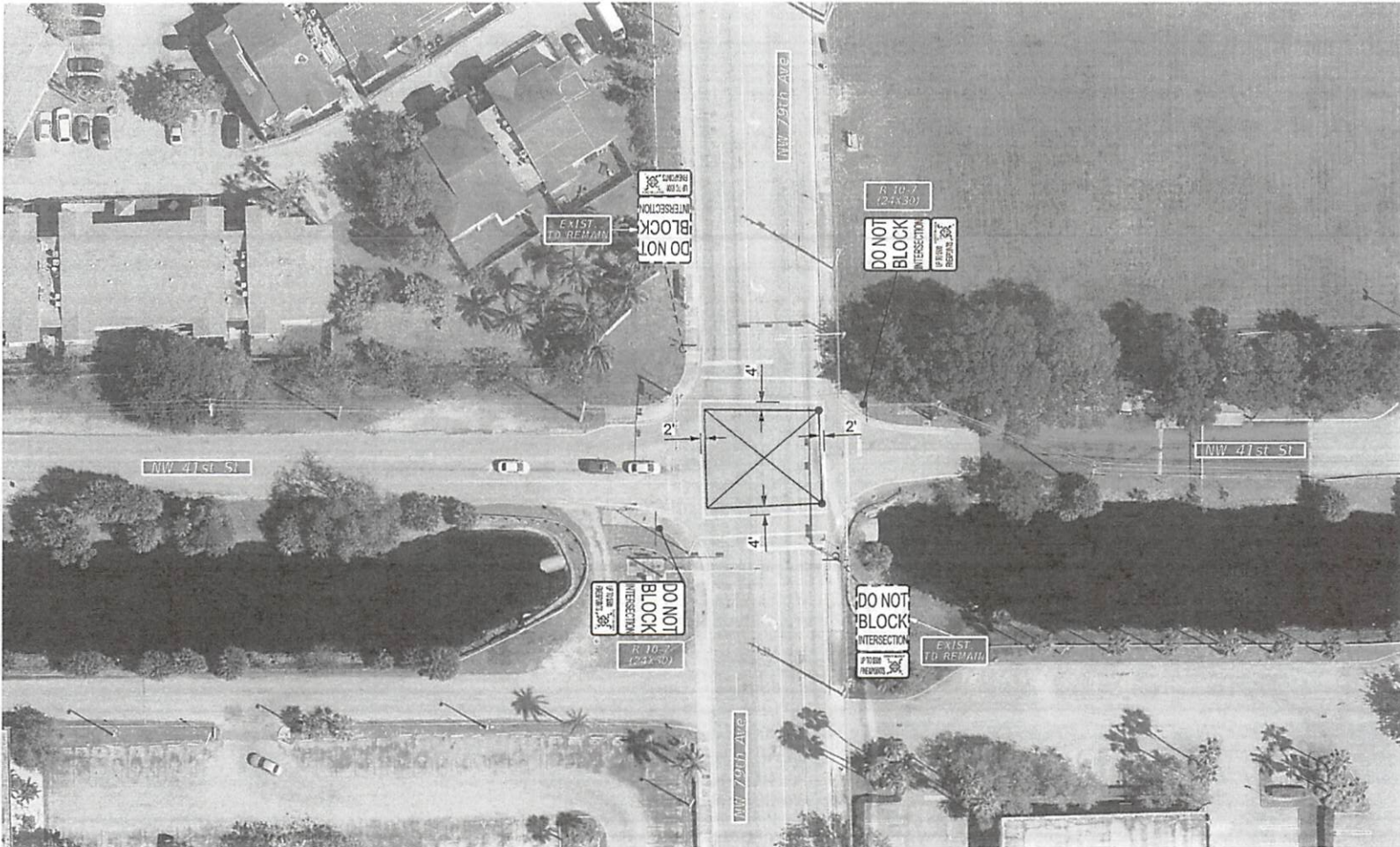


DETAIL
TWO #2 - DO NOT BLOCK THE BOX AT 13 INTERSECTIONS





CITY OF DORAL



PAVEMENT MARKING QUANTITIES

DO NOT BLOCK SIGNS	2	E.A.
DON'T BLOCK THE BOX	4	E.A.
8" WHITE	198.26	L.F.
6" WHITE	140.77	L.F.

LEGEND



DO NOT BLOCK INTERSECTION, SEE DETAIL SHEET S-1 (OPTION 1)

● REFERENCE POINT

PREPARED BY: PEVIDA HIGHWAY DESIGNERS, LLC



NW 79th AVENUE AT NW 41st STREET
TWO #2 - DO NOT BLOCK THE BOX AT 13 INTERSECTIONS

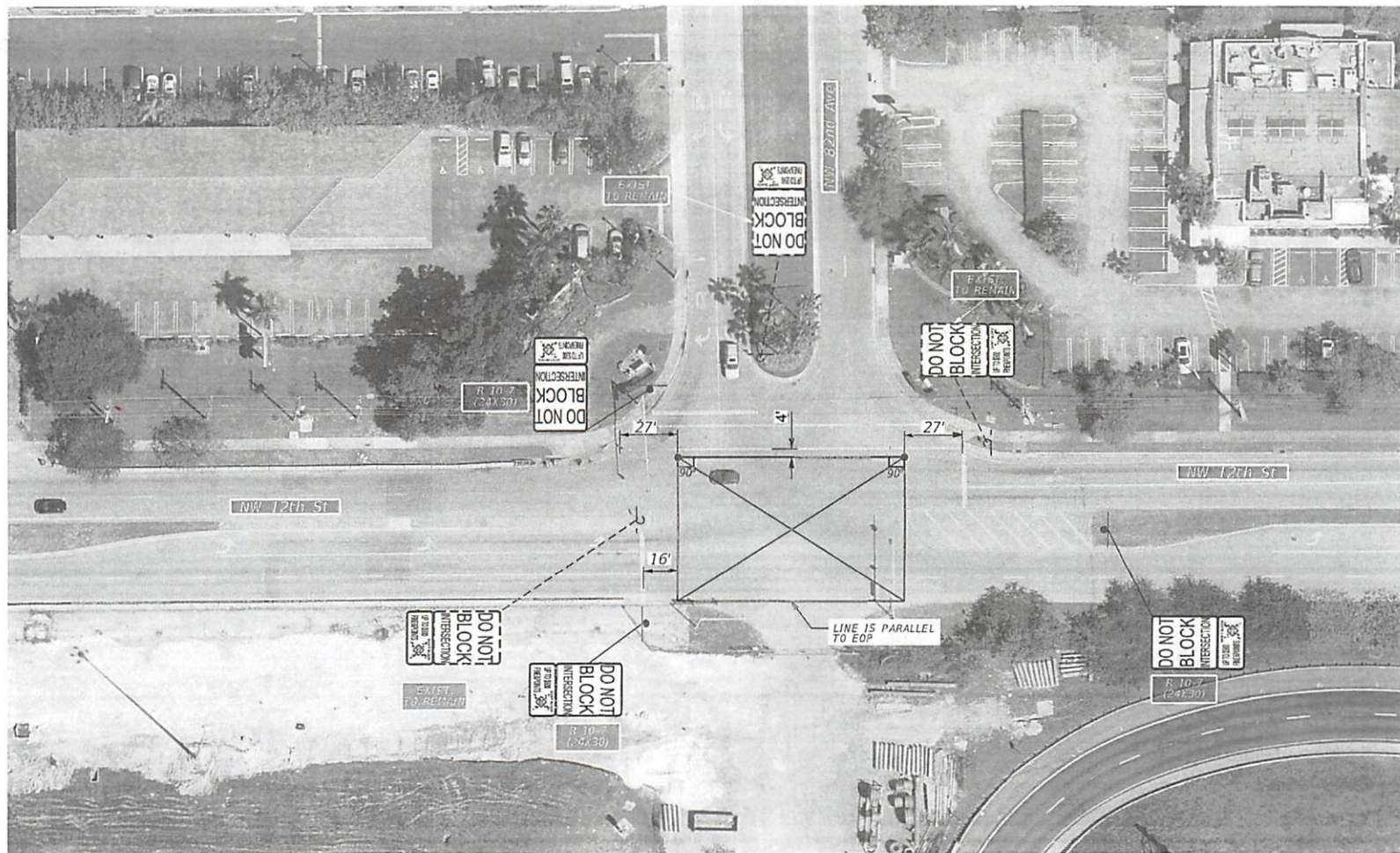
PLAN VIEW / SHEET S-2



DATE: 09.12.2018



CITY OF DORAL



W. M. ...
 12/14/18

PAVEMENT MARKING QUANTITIES

DO NOT BLOCK SIGNS	3	E.A.
DONT BLOCK THE BOX	6	E.A.
8" WHITE	347.32	LF.
6" WHITE	251.59	LF.

LEGEND

 DO NOT BLOCK INTERSECTION. SEE DETAIL SHEET S-1 (OPTION 1)

● REFERENCE POINT

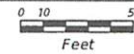
PREPARED BY: PEVIDA HIGHWAY DESIGNERS, LLC



NW 82nd AVENUE AT NW 12th STREET
 TWO #2 - DO NOT BLOCK THE BOX AT 13 INTERSECTIONS



PLAN VIEW / SHEET S-4

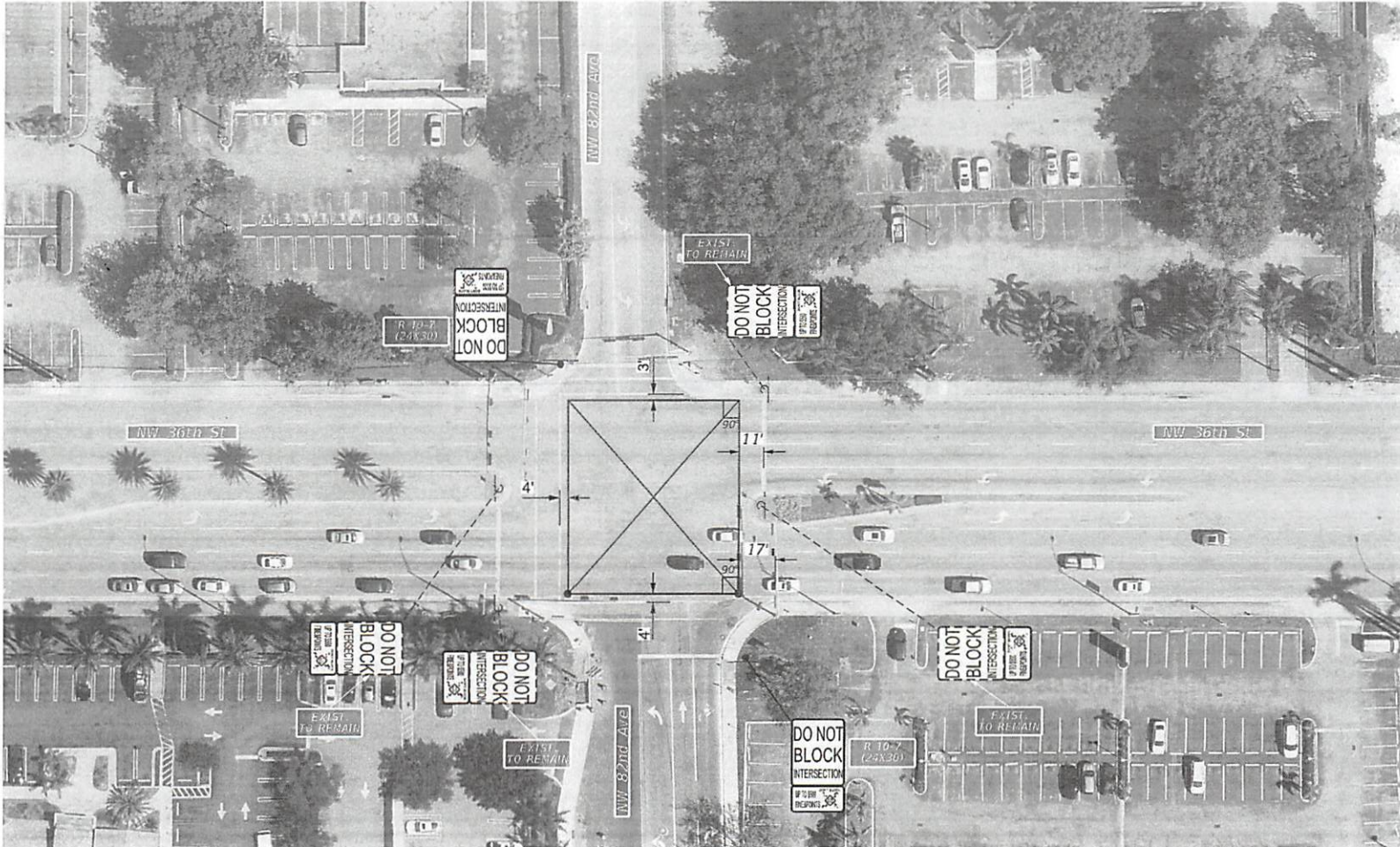


Feet

DATE: 09.12.2018



CITY OF DORAL



PAVEMENT MARKING QUANTITIES

DO NOT BLOCK SIGNS	2	E.A.
DONT BLOCK THE BOX	6	E.A.
8" WHITE	342.43	L.F.
6" WHITE	242.59	L.F.

LEGEND



DO NOT BLOCK INTERSECTION, SEE DETAIL SHEET S-1 (OPTION 1)

● REFERENCE POINT

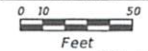
PREPARED BY: PEVIDA HIGHWAY DESIGNERS, LLC



NW 82nd AVENUE AT NW 36th STREET
TWO #2 - DO NOT BLOCK THE BOX AT 13 INTERSECTIONS



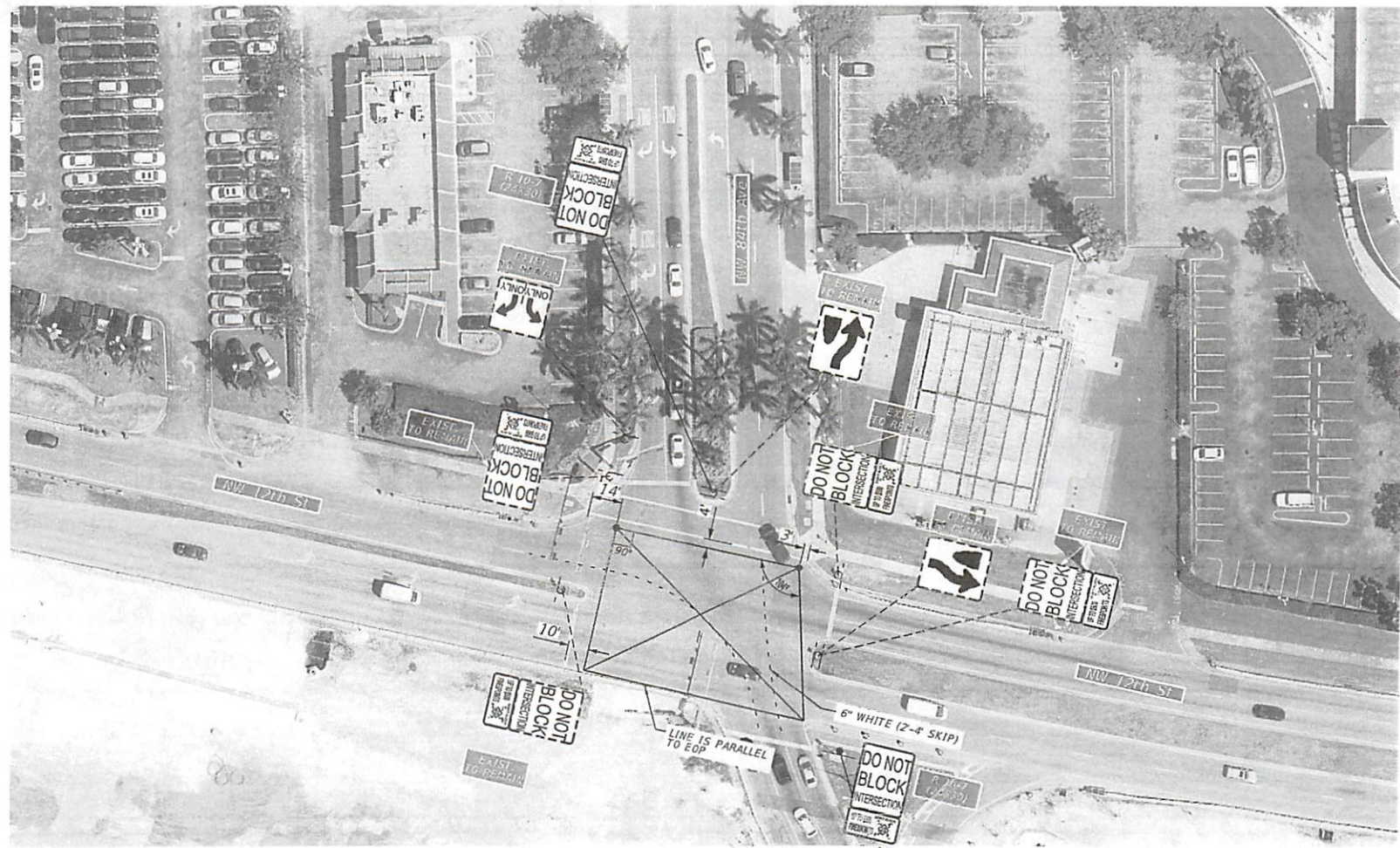
PLAN VIEW / SHEET S-5



DATE: 09.12.2018



CITY OF DORAL



PAVEMENT MARKING QUANTITIES

DO NOT BLOCK SIGNS	2	E.A.
DONT BLOCK THE BOX	6	E.A.
8" WHITE	337.42	L.F.
6" WHITE	240.53	L.F.
6" WHITE (2'-4" SKIP)	231.52	L.F.

W. M. M. M.
12-11-18

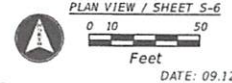
LEGEND

- DO NOT BLOCK INTERSECTION, SEE DETAIL SHEET S-1 (OPTION 1)
- REFERENCE POINT

PREPARED BY: PEVIDA HIGHWAY DESIGNERS, LLC



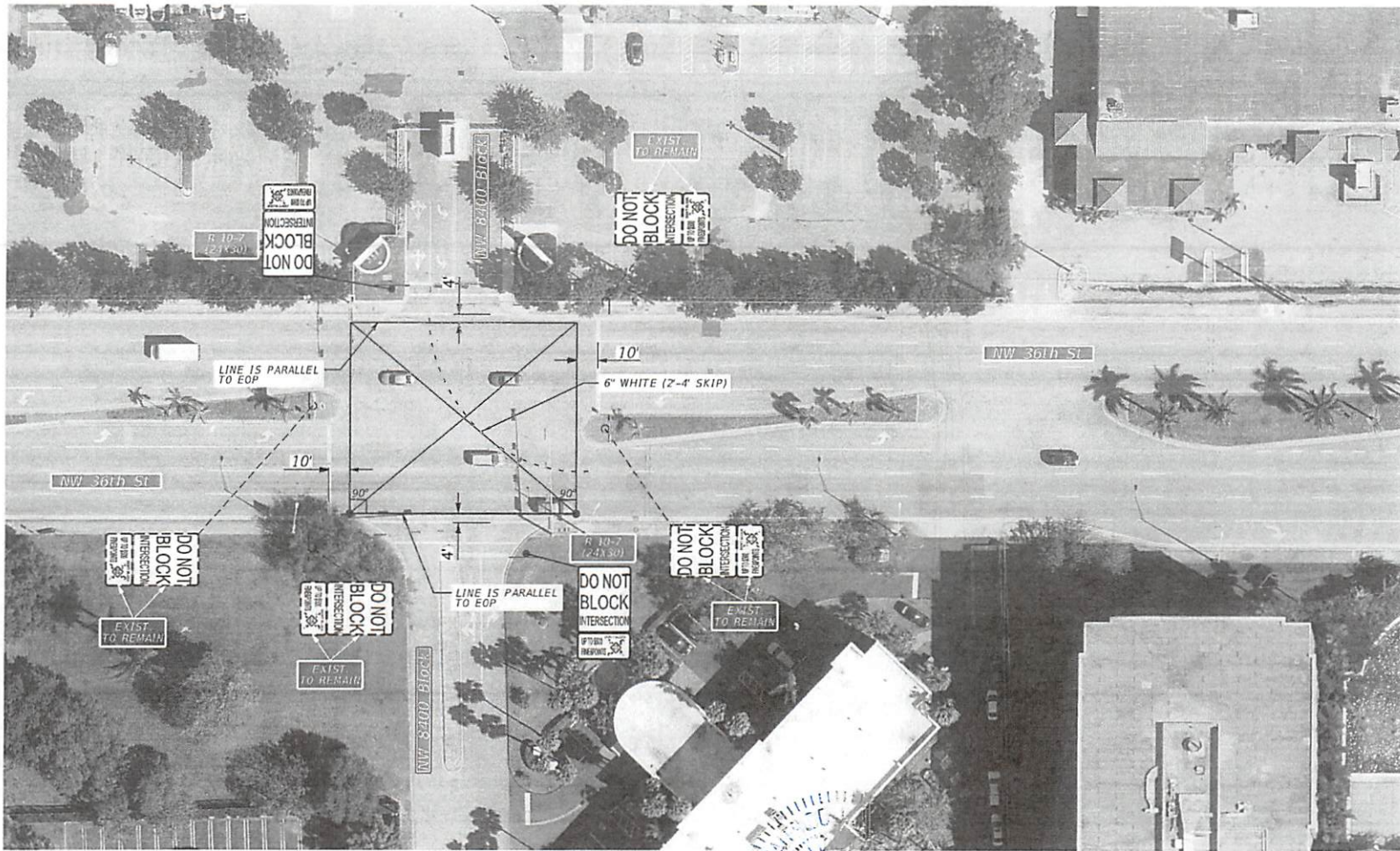
NW 84th AVENUE AT NW 12th STREET
TWO #2 - DO NOT BLOCK THE BOX AT 13 INTERSECTIONS



DATE: 09.12.2018



CITY OF DORAL



PAVEMENT MARKING QUANTITIES

DO NOT BLOCK SIGNS	2	E.A.
DON'T BLOCK THE BOX	2	E.A.
8" WHITE	392.20	L.F.
6" WHITE	278.30	L.F.
6" WHITE (2'-4" SKIP)	108.94	L.F.

No. 51472
[Signature]
 12/14/19
 J.A. [Signature]

LEGEND



DO NOT BLOCK INTERSECTION, SEE DETAIL SHEET S-1 (OPTION 1)

● REFERENCE POINT

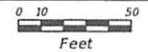
PREPARED BY: PEVIDA HIGHWAY DESIGNERS, LLC



NW 8400 BLOCK AT NW 36th STREET
 TWO #2 - DO NOT BLOCK THE BOX AT 13 INTERSECTIONS



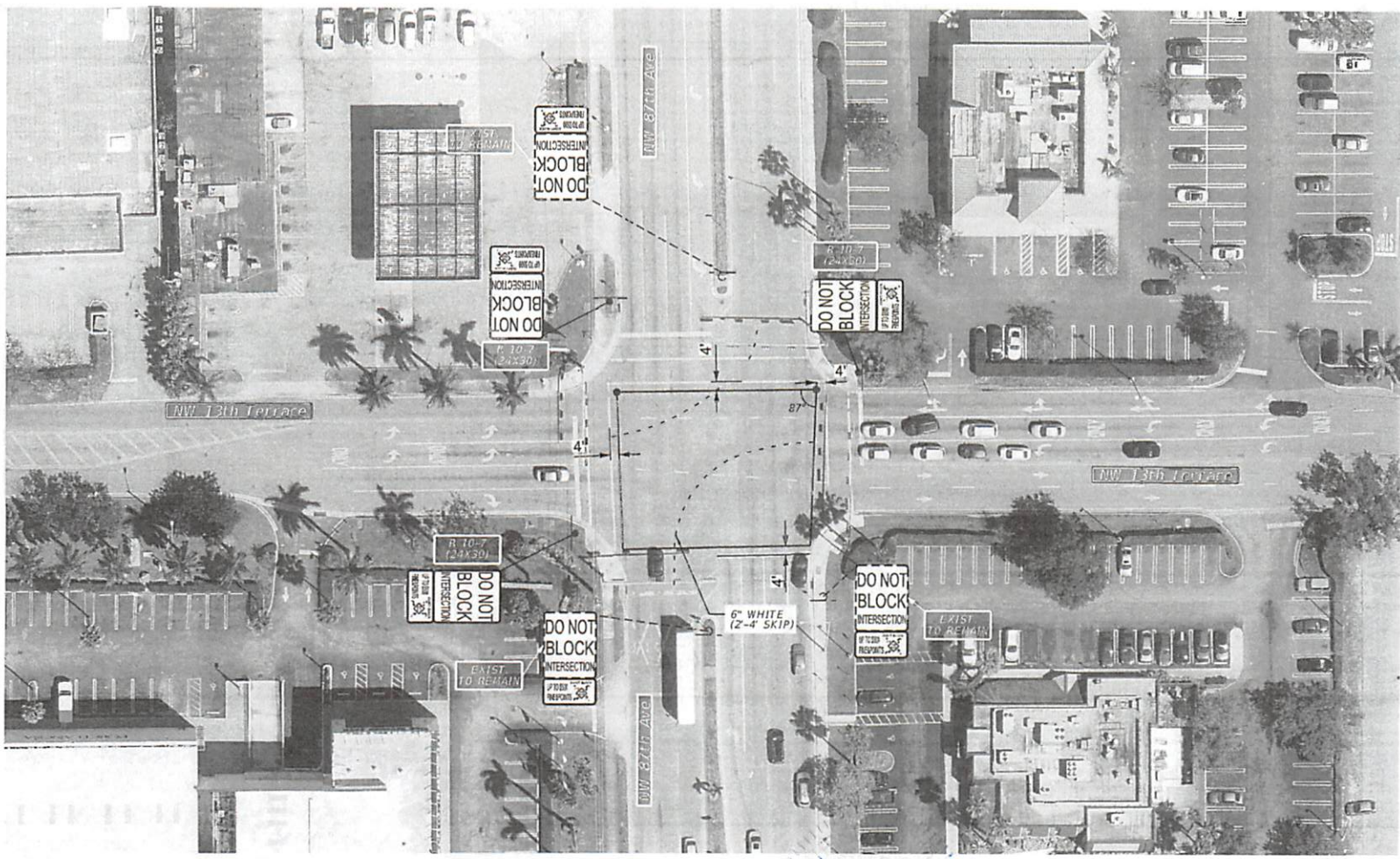
PLAN VIEW / SHEET S-7



DATE: 09.12.2018



CITY OF DORAL



PAVEMENT MARKING QUANTITIES

DO NOT BLOCK SIGNS	3	E.A.
DON'T BLOCK THE BOX	6	E.A.
8" WHITE	333.57	L.F.
6" WHITE (2'-4" SKIP)	185.68	L.F.

W. J. ...
 12/14/18

LEGEND

- DO NOT BLOCK INTERSECTION. SEE DETAIL SHEET S-1 (OPTION 2)
- REFERENCE POINT

PREPARED BY: PEVIDA HIGHWAY DESIGNERS, LLC



NW 87th AVENUE AT NW 13th TERRACE
 TWO #2 - DO NOT BLOCK THE BOX AT 13 INTERSECTIONS

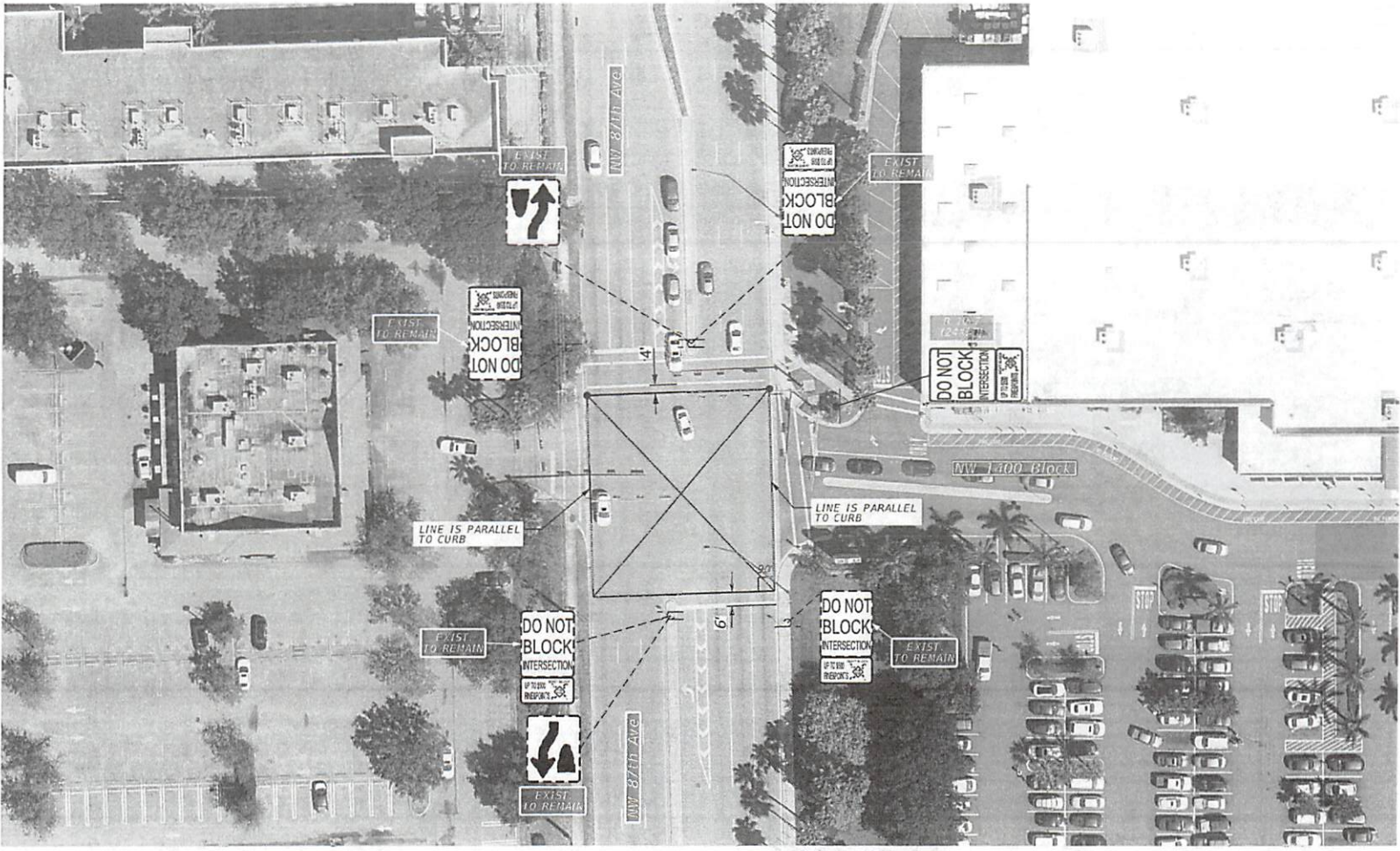
PLAN VIEW / SHEET S-8

0 10 50
Feet

DATE: 09.12.2018




CITY OF DORAL



PAVEMENT MARKING QUANTITIES

DO NOT BLOCK SIGNS	1	E.A.
DON'T BLOCK THE BOX	5	E.A.
8" WHITE	362.37	L.F.
6" WHITE	256.45	L.F.

LEGEND

-  DO NOT BLOCK INTERSECTION, SEE DETAIL SHEET S-1 (OPTION 1)
- REFERENCE POINT

PREPARED BY: PEVIDA HIGHWAY DESIGNERS, LLC



NW 87th AVENUE AT NW 1400 BLOCK
TWO #2 - DO NOT BLOCK THE BOX AT 13 INTERSECTIONS

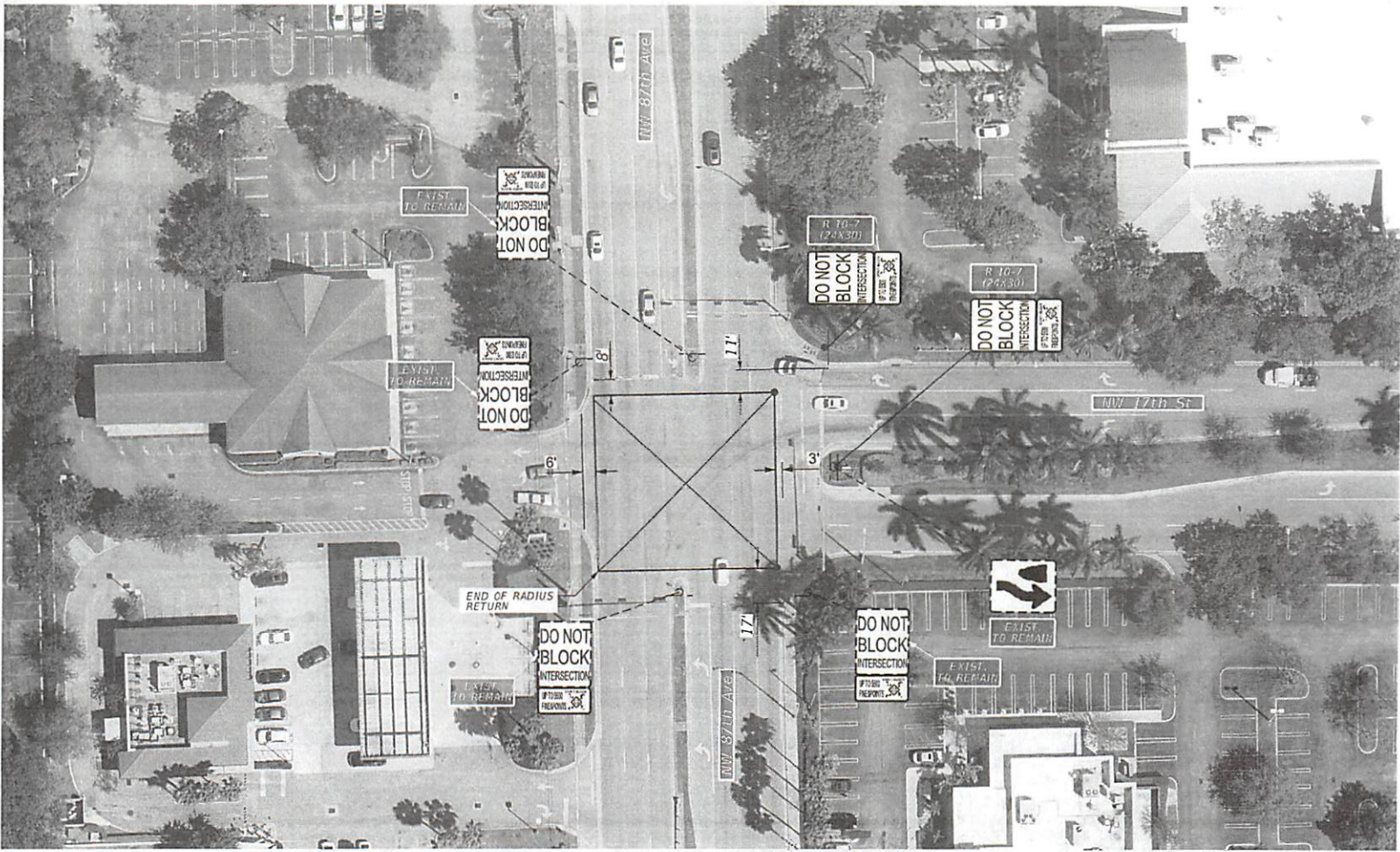
PLAN VIEW / SHEET S-9

Feet

DATE: 09.12.2018



CITY OF DORAL



PAVEMENT MARKING QUANTITIES

DO NOT BLOCK SIGNS	2	E.A.
DON'T BLOCK THE BOX	6	E.A.
8" WHITE	334.61	LF.
6" WHITE	235.31	LF.

WMM
12/14/18

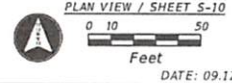
LEGEND

- DO NOT BLOCK INTERSECTION. SEE DETAIL SHEET S-1 (OPTION 1)
- REFERENCE POINT

PREPARED BY: PEVIDA HIGHWAY DESIGNERS, LLC



NW 87th AVENUE AT NW 17th STREET
TWO #2 - DO NOT BLOCK THE BOX AT 13 INTERSECTIONS

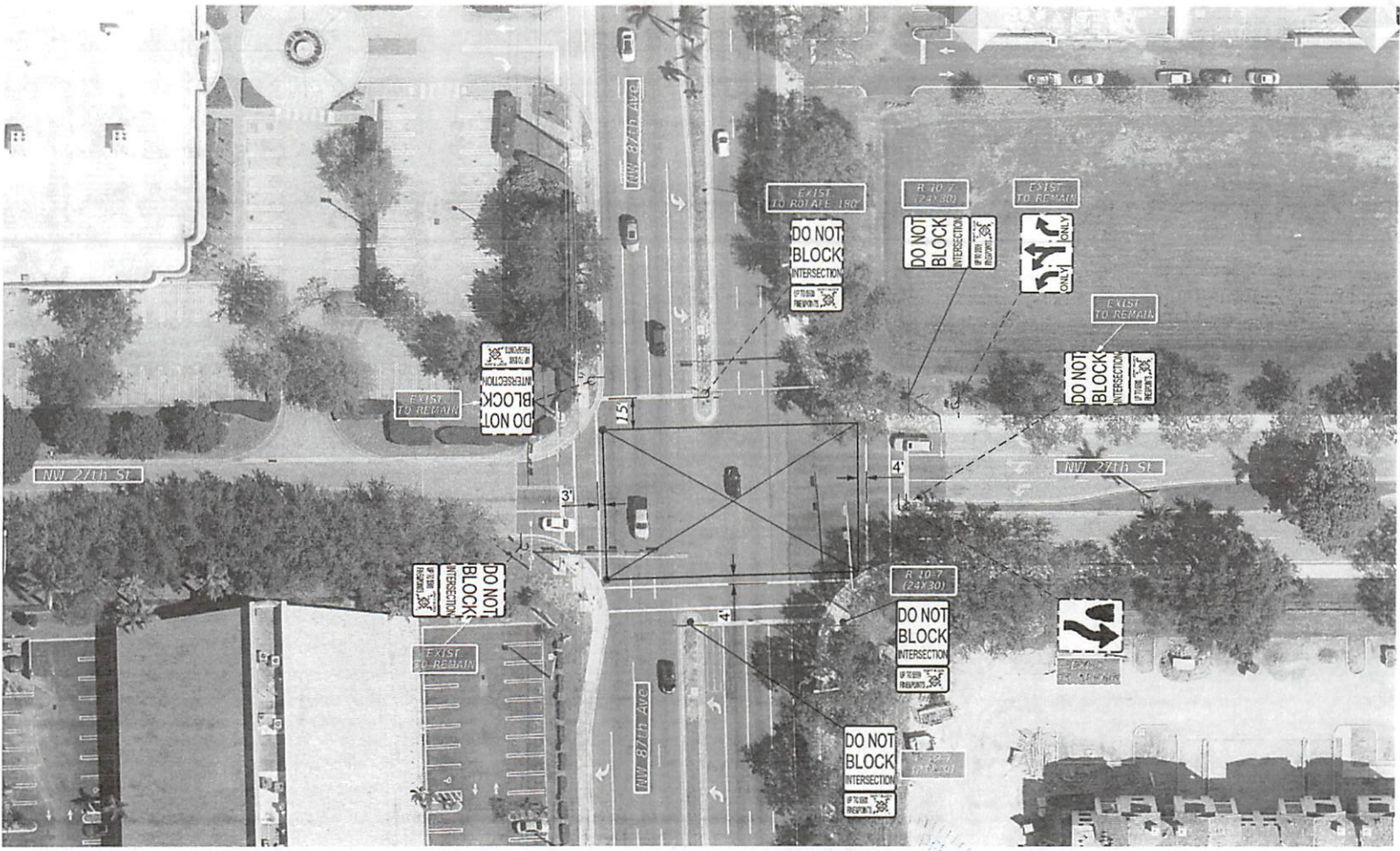


PLAN VIEW / SHEET S-10

DATE: 09.12.2018



CITY OF DORAL




PAVEMENT MARKING QUANTITIES

DO NOT BLOCK SIGNS	3	E.A.
DONT BLOCK THE BOX	7	E.A.
8" WHITE	379.89	L.F.
6" WHITE	277.44	L.F.

WAM
12/14/18

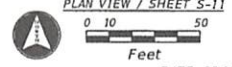
LEGEND

-  DO NOT BLOCK INTERSECTION. SEE DETAIL SHEET S-1 (OPTION 1)
- REFERENCE POINT

PREPARED BY: PEVIDA HIGHWAY DESIGNERS, LLC



NW 87th AVENUE AT NW 27th STREET
TWO #2 - DO NOT BLOCK THE BOX AT 13 INTERSECTIONS

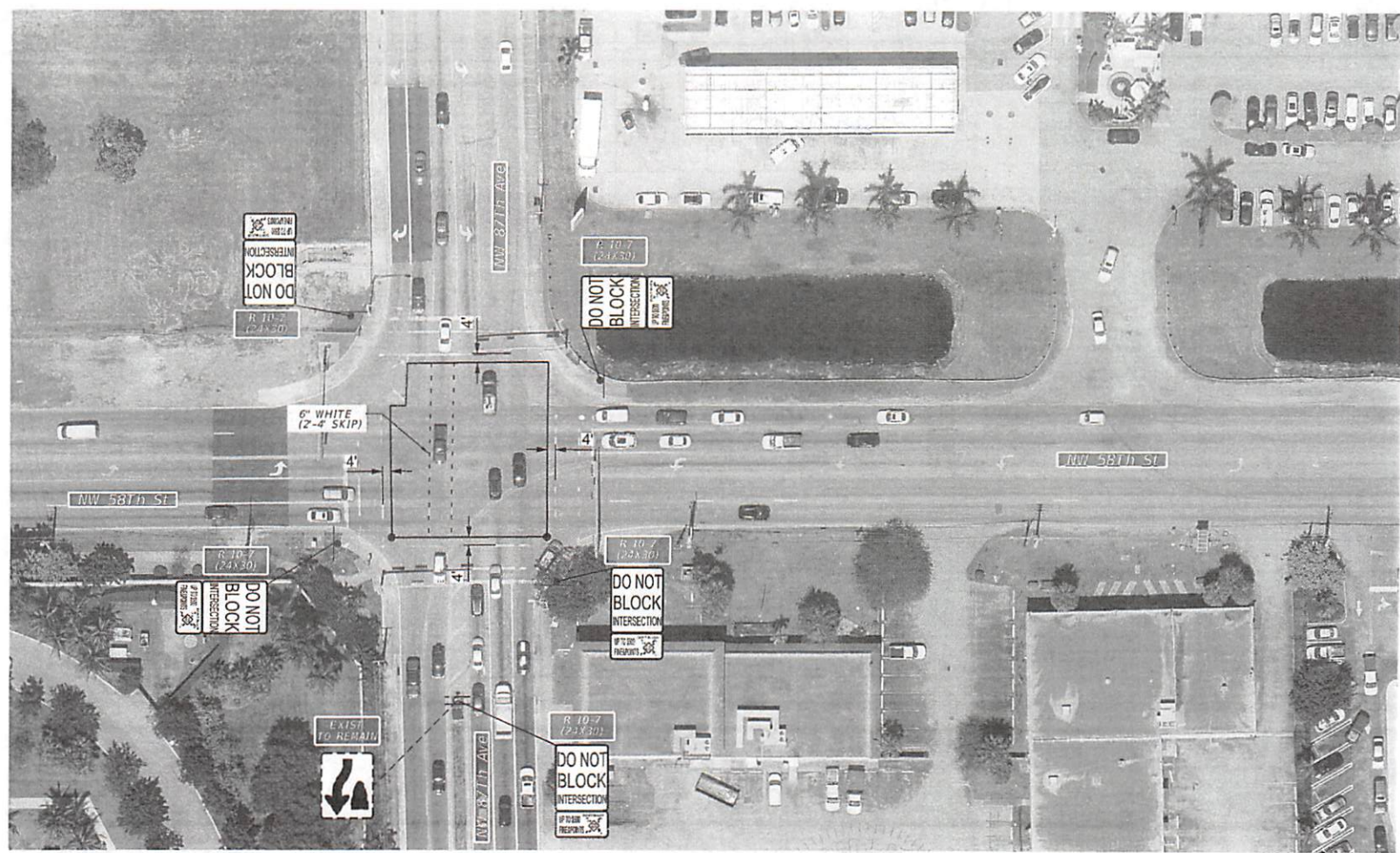


PLAN VIEW / SHEET S-11

DATE: 09.12.2018



CITY OF DORAL



PAVEMENT MARKING QUANTITIES

DO NOT BLOCK SIGNS	5	E.A.
DONT BLOCK THE BOX	5	E.A.
8" WHITE	312.79	L.F.
6" WHITE (2'-4" SKIP)	165.22	L.F.

W. J. ...
12/14/18

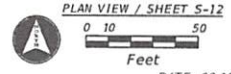
LEGEND

- DO NOT BLOCK INTERSECTION, SEE DETAIL SHEET S-1 (OPTION 2)
- REFERENCE POINT

PREPARED BY: PEVIDA HIGHWAY DESIGNERS, LLC



NW 87th AVENUE AT NW 58th STREET
TWO #2 - DO NOT BLOCK THE BOX AT 13 INTERSECTIONS

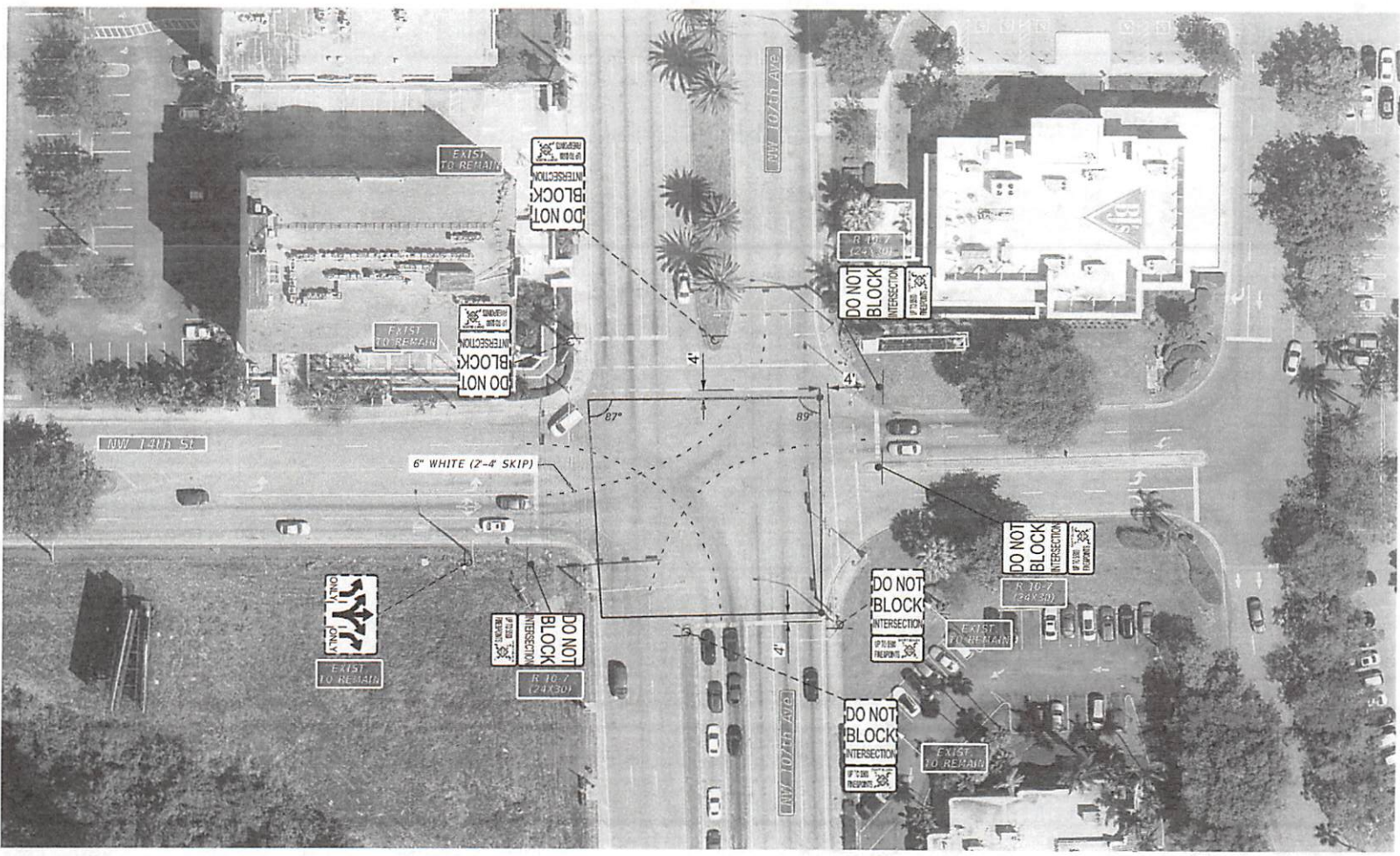


PLAN VIEW / SHEET S-12

DATE: 09.12.2018



CITY OF DORAL



PAVEMENT MARKING QUANTITIES

DO NOT BLOCK SIGNS	3	E.A.
DONT BLOCK THE BOX	7	E.A.
8" WHITE	423.57	L.F.
6" WHITE (2'-4" SKIP)	335.58	L.F.

W. M. Williams
12/14/19

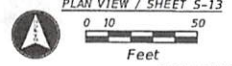
LEGEND

- DO NOT BLOCK INTERSECTION, SEE DETAIL SHEET S-1 (OPTION 2)
- REFERENCE POINT

PREPARED BY: PEVIDA HIGHWAY DESIGNERS, LLC



NW 107th AVENUE AT NW 14th STREET
TWO #2 - DO NOT BLOCK THE BOX AT 13 INTERSECTIONS

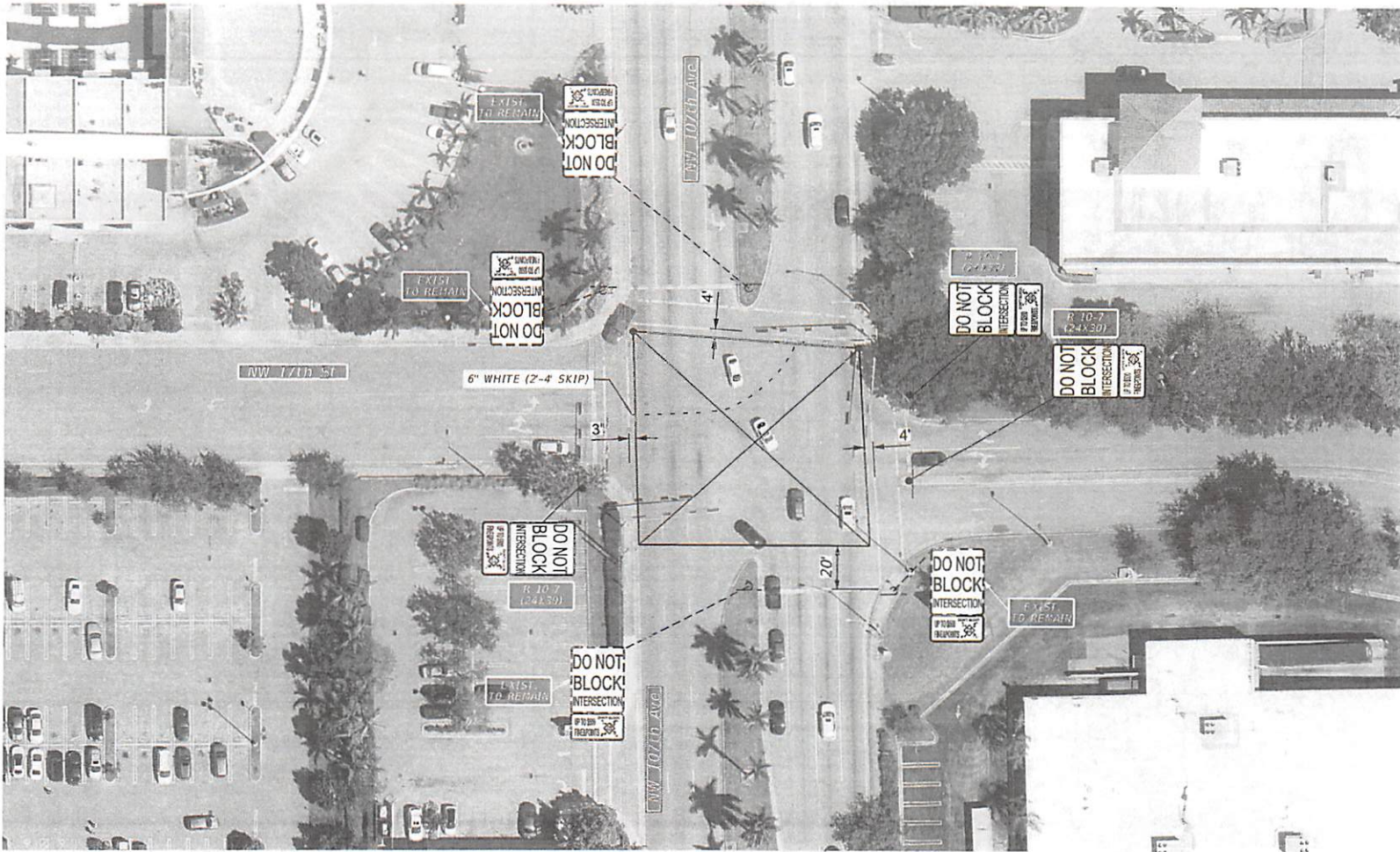


PLAN VIEW / SHEET 5-13

DATE: 09.12.2018



CITY OF DORAL



PAVEMENT MARKING QUANTITIES

DO NOT BLOCK SIGNS	3	E.A.
DON'T BLOCK THE BOX	7	E.A.
8" WHITE	408.58	L.F.
6" WHITE	288.97	L.F.
6" WHITE (2'-4" SKIP)	81.82	L.F.

W. W. W.
12/14/18

LEGEND



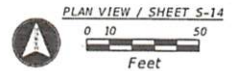
DO NOT BLOCK INTERSECTION, SEE DETAIL SHEET S-1 (OPTION 1)

● REFERENCE POINT

PREPARED BY: PEVIDA HIGHWAY DESIGNERS, LLC



NW 107th AVENUE AT NW 17th STREET
 TWO #2 - DO NOT BLOCK THE BOX AT 13 INTERSECTIONS



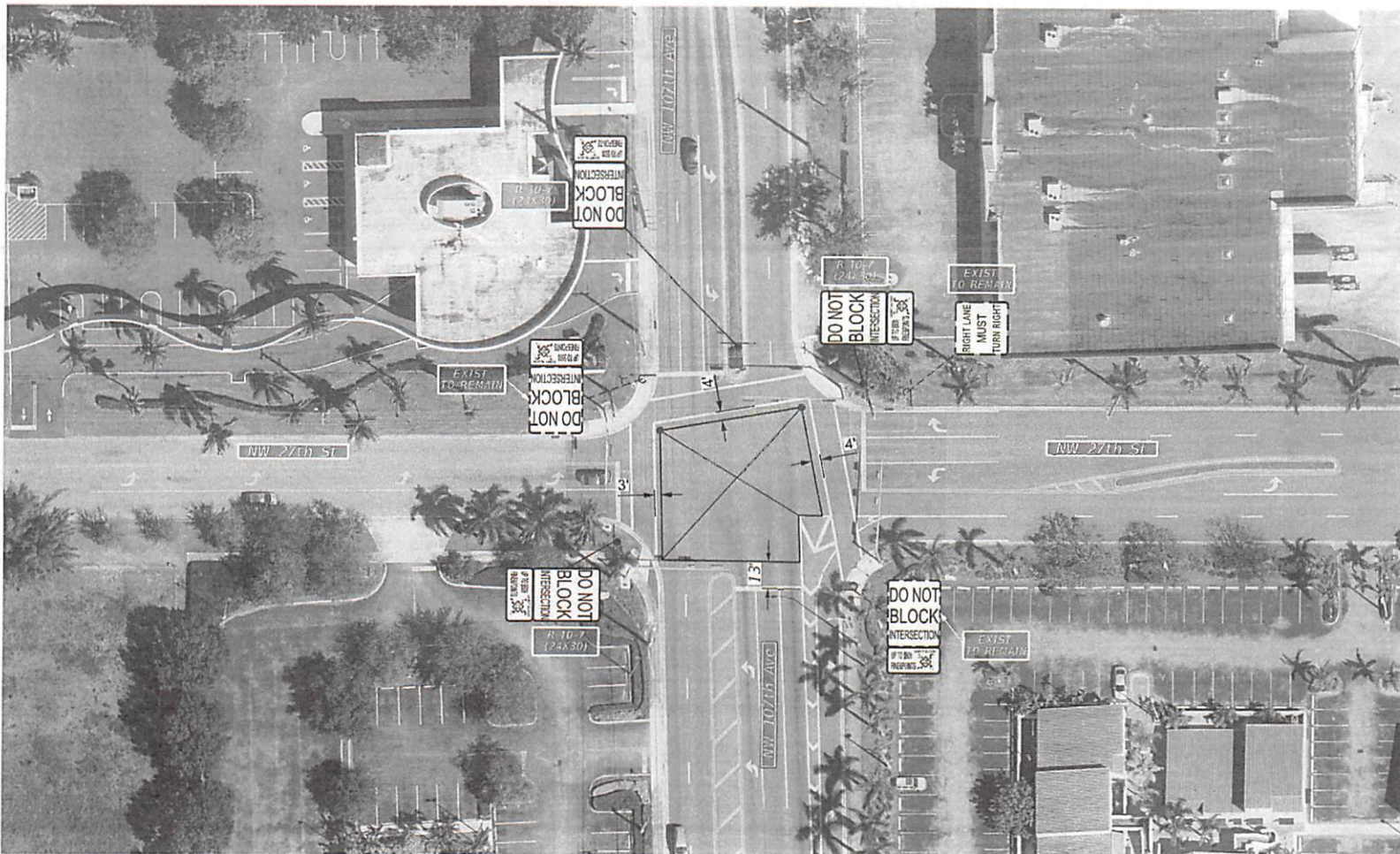
PLAN VIEW / SHEET S-14

Feet

DATE: 09.12.2018



CITY OF DORAL



PAVEMENT MARKING QUANTITIES

DO NOT BLOCK SIGNS	3	E.A.
DON'T BLOCK THE BOX	5	E.A.
8" WHITE	276.47	L.F.
6" WHITE	172.17	L.F.

W. M. 12/14/18

LEGEND



DO NOT BLOCK INTERSECTION. SEE DETAIL SHEET S-1 (OPTION 1)

● REFERENCE POINT

PREPARED BY: PEVIDA HIGHWAY DESIGNERS, LLC



NW 107th AVENUE AT NW 27th STREET
TWO #2 - DO NOT BLOCK THE BOX AT 13 INTERSECTIONS



PLAN VIEW / SHEET S-15



Feet

DATE: 09.12.2018



CITY OF DORAL
 PUBLIC WORKS DEPARTMENT
 8401 NW 53rd Terrace
 DORAL, FLORIDA 33166
 Ph. (305)593-6740
 Fax (305) 593-6617

WORK AUTHORIZATION FOR CONTRACTUAL SERVICES

TO: H & R Paving, Inc.
 1955 NW 110th Avenue
 Miami, FL 33172
 305-261-3005
 305-592-6079 FAX

DATE: February 11, 2019

WORK ORDER No. 18-08 (ITB #2016-43)

TOTAL AMOUNT: \$1,219.99 (Not to exceed)

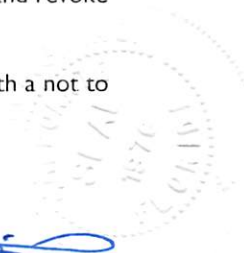


PROJECT SCOPE OF WORK: The City of Doral authorizes the firm of H&R Paving, Inc. to proceed with the bike lanes painting construction as per the attached roadway plan description. Work is to be performed along the following road segment 10075 NW 52nd Street., as provided by the City's Public Works Department, in accordance with the terms, conditions and specifications of the Contract Documents, (ITB#2016-43) "Milling and Resurfacing of Bituminous Paving, Miscellaneous Stormwater Improvement" Agreement. All road construction and repairs will comply with Miami-Dade County Public Works Manual Part 2 Design and Construction Section 51, Limerock Base, Section 100, Prime and Tack Coats, Section 132, Asphaltic Concrete Binder Course, Section 133, Type S-I Asphaltic Concrete Surface Course.


If Contractor fails to execute said Work Order in a timely manner and complete all work within 30 calendar days from the time this work order is executed. The City of Doral will be entitled to disqualify the Proposal, and revoke the award.

The performance of services associated with this Work Order will be executed on a 'Line Item' basis with a not to exceed amount of \$1,219.99 which includes a 10% contingency.

Contractor: H & R Paving, Inc.

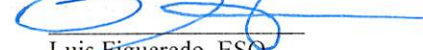
BY: 
 NAME: Alberto Rodriguez
 TITLE: Rep.

WITNESSES: SEAL: 
 1. 
 2. 

OWNER: City of Doral
 BY: 
 NAME: Albert P. Childress
 TITLE: Acting City Manager

AUTHENTICATION:
 BY: 
 NAME: Connie Diaz
 TITLE: City Clerk

APPROVED AS TO FORM AND
 LEGAL SUFFICIENCY FOR THE SOLE USE
 OF THE CITY OF DORAL:

BY: 
 NAME: Luis Figueredo, ESQ
 TITLE: City Attorney

Item	Description	Unit	QTY	Unit Price	Cost
5	Mobilization-Demobilization (Pavement Marking and Signage Projects)(Scope of work: existing pavement marking removal, pavement markings, rpms, etc.)	EA	1	\$ 1.00	\$ 1.00
6	Maintenance of Traffic (Pavement Marking Projects)(Includes traffic control, pedestrian and vehicle access, signs, barricades, and flagger, as per FDOT Standards, lighting, and steel plates if required)	EA	1	\$ 450.00	\$ 450.00
90	Patterned Pavement, Vehicular Areas - Green Bike Lane (FDOT Item No. 0523-1-3)	SY	25	\$ 30.25	\$ 768.99



Subtotal	\$	1,219.99
10% Contingency	\$	-
Total	\$	1,219.99

RESOLUTION No. 17-40

A RESOLUTION OF THE MAYOR AND THE CITY COUNCIL OF THE CITY OF DORAL, FLORIDA, APPROVING THE AWARD OF INVITATION TO BID #2016-43, "MILLING AND RESURFACING OF BITUMINOUS PAVING, MISCELLANEOUS STORMWATER IMPROVEMENTS" TO H&R PAVING, INC; AUTHORIZING THE CITY MANAGER TO NEGOTIATE AND ENTER INTO AN AGREEMENT, SUBJECT TO APPROVAL AS TO FORM AND LEGAL SUFFICIENCY BY THE CITY ATTORNEY, IN AN AMOUNT NOT TO EXCEED \$2,406,668.37, FOR THE PROVISION OF CITYWIDE ROADWAY IMPROVEMENTS AND TO EXPEND BUDGETED FUNDS IN FURTHERANCE HEREOF; PROVIDING FOR IMPLEMENTATION; AND PROVIDING FOR AN EFFECTIVE DATE

WHEREAS, in response to Invitation to Bid #2016-43 for "Milling and Resurfacing of Bituminous Paving, Miscellaneous Stormwater Improvements" (the "Project"), the City received six (6) bids by the January 31, 2017 deadline, with all six (6) companies meeting the required criteria; and

WHEREAS, upon review of bids received, staff determined that H&R Paving Inc. was the lowest most responsive and responsible bidder (the "Contractor"); and

WHEREAS, a copy of Contractor's Bid Submittal which includes the Construction Contract, ITB #2016-43 Inventory, and Bid Tabulation are all attached as Exhibit "A", which is incorporated herein and made a part hereof by this reference; and

WHEREAS, staff recommends the City Council award the bid to H&R Paving and authorize the City Manager to enter into an agreement for the Project with the Contractor in a not to exceed amount of \$2,406,668.37, which includes a 10% contingency for any unforeseen conditions, is in the best interest of the City.

NOW, THEREFORE, BE IT RESOLVED BY THE MAYOR AND CITY COUNCIL OF THE CITY OF DORAL, FLORIDA, AS FOLLOWS:

Section 1. Recitals. The above recitals are confirmed, adopted, and incorporated herein and made part hereof by this reference.

Section 2. Award. Invitation to Bid #2016-43 for "Milling and Resurfacing of Bituminous Paving, Miscellaneous Stormwater Improvements" is hereby award to H&R Paving, the lowest, most responsible and most responsive bidder. This award, in and of itself, and absent entering into an agreement, does not vest H&R Paving with any contractual rights with regard to the Bid, the Project, or the City.

Section 3. Approval. The Contract between the City and Contractor for the Project, in substantially the form provided in in Exhibit "A", which is incorporated herein and made a part hereof by this reference, together with such non-material changes as may be acceptable to the City Manager and approved as to form and legal sufficiency by the City Attorney, in an amount of \$2,406,668.37 (which includes a 10% contingency for any unforeseen conditions), is hereby approved.

Section 4. Authorization. The City Manager is authorized to execute the construction contract and expend budgeted funds on behalf of the City in furtherance hereof.

Section 5. Implementation. The City Manager and the City Attorney are hereby authorized to take such further action as may be necessary to implement the purpose and the provisions of this Resolution.

Section 6. Effective Date. This Resolution shall take effect immediately upon adoption.

The foregoing resolution was offered by Vice Mayor Cabrera who moved its adoption. The motion was seconded by Councilmember Rodriguez and upon being put to a vote, the vote was as follows:

Mayor Juan Carlos Bermudez	Yes
Vice Mayor Pete Cabrera	Yes
Councilwoman Christi Fraga	Absent/Excused
Councilwoman Claudia Mariaca	Yes
Councilwoman Ana Maria Rodriguez	Yes

PASSED and ADOPTED this 8 day of March, 2017.



JUAN CARLOS BERMUDEZ, MAYOR

ATTEST:



CONNIE DIAZ, CMC
CITY CLERK

APPROVED AS TO FORM AND LEGAL SUFFICIENCY
FOR THE USE AND RELIANCE OF THE CITY OF DORAL ONLY:



WEISS, SEROTA, HELFMAN, COLE & BIERMAN, P.L.
CITY ATTORNEY