

WORK ORDER No. 18 FOR PROFESSIONAL SERVICES

TO: CHA Consulting, Inc.
10305 N.W. 41 Street, Suite 115
Miami, Florida 33178
(305) 592-7283

DATE: September 5, 2023

The City of Doral authorizes the firm of CHA Consulting, Inc. to provide professional engineering design services for the provision of Drainage improvements on NW 56th Street and NW 102nd Ave, and NW 57th Street and NW 114 Ave. Where CHA Consulting, Inc. is a prequalified provider of professional engineering services selected in accordance with Consultant Competitive Negotiation Act (CCNA) requirements and approved by the City Council in October 2020 through Resolution 20-20-243. The work should be performed in accordance with the contract provisions contained in the Continuing Professional Services Agreement between CHA Consulting, Inc. and the City of Doral dated January 1, 2020, and the attached Proposal dated August 31, 2023, and submitted by your firm for the above referenced project.

SCOPE OF SERVICES AND SCHEDULE:

The scope of the project will be as described in the attached proposal from CHA Consulting, Inc. dated August 31, 2023, for the "Drainage improvements on NW 56th Street and NW 102nd Ave and NW 57th Street and NW 114 Ave". The schedule requires the scope of work to be completed within 45 Days of Notice to Proceed. All limitations of time set forth in this Work Order are of the essence. The performance of services associated with this Work Order will be executed on a lump sum basis not to exceed the amount of \$29,839.60.

You are required by the Continuing Service Agreement to begin work subsequent to the execution of this Work Order, or as directed otherwise. If you fail to begin work subsequent to the execution of this Work Order, the City of Doral will be entitled to disqualify the Proposal and revoke the award.

Work Order incorporates the terms and conditions set forth in the Continuing Services Agreement dated January 1, 2020, between the parties as though fully set forth herein. In the event that any terms or conditions of this Work Order conflict with the Continuing Services Agreement, the provisions of this specific Work Order shall prevail and apply. Work Order is not binding until the City of Doral agrees and approves this Work Order.

IN WITNESS WHEREOF, the parties hereto have executed this Agreement on the day and date first above written, in three (3) counterparts, each of which shall, without proof or accounting for the other counterpart be deemed an original Contract.

CONSULTANT: CHA Consulting, Inc.

BY: *Arnelio Alfonso*
NAME: Arnelio Alfonso
TITLE: Water Resources Team Leader

WITNESSES:

1. *[Signature]*
2. *[Signature]*

SEAL:



OWNER: City of Doral

AUTHENTICATION:

BY: *B.H.H.*
NAME: Barbara Hernandez
TITLE: City Manager

BY: *Connie Diaz*
NAME: Connie Diaz
TITLE: City Clerk

APPROVED AS TO FORM AND LEGAL SUFFICIENCY FOR THE SOLE USE OF THE CITY OF DORAL:

BY: *Valerie Vicente*
NAME: Valerie Vicente, Esq for Nabors
Gibling & Nickerson, P.A.
TITLE: City Attorney



CONSULTANT WORK ORDER PROPOSAL

August 31, 2023
Darlin Perez, P.E.
City of Doral
Chief of Engineering
8401 NW 53 Terrace
Doral, FL 33166

**Re: Stormcrete Installation Improvements
Scope of Work and Fee Proposal
Design Services**

Dear Ms. Perez,

In accordance with City of Doral's request, CHA Consulting, Inc. proposes to provide the services identified below for the project titled "**Stormcrete Installation Improvements**", **Civil Engineering Services**, pursuant to its Professional Service Agreement with the City of Doral.

I. GENERAL

The purpose of this task work order is to provide design services for the work involving the installation of the precast porous panels known as Stormcrete, to address severe ponding impacting crosswalks and accessible curb ramps at the five (5) locations listed below and identified in the Location Map found in Exhibit 1.

- Location 1: SW corner of the intersection at NW 56th Street & Northwest 102nd Avenue
- Location 2: NE corner of the intersection at NW 56th Street & Northwest 102nd Avenue
- Location 3: SE corner of the intersection at NW 56th Street & Northwest 102nd Avenue
- Location 4: NE corner of the intersection at NW 57th Street & Northwest 114th Avenue
- Location 5: SE corner of the intersection at NW 57th Street & Northwest 114th Avenue

Anticipated design work is as follows:

- Roadway and grading design to accommodate the proposed porous panels and address current ponding conditions.
- Utility coordination.
- Relocation of light pole at the SW corner of SW 102nd Avenue and NW 56th Street through a Utility Work Schedule.
- Restoring Signing and Pavement Markings impacted by the proposed work.
- Maintenance of Traffic Plans.

The Consultant is to provide all project management and civil engineering design services necessary for the roadway and drainage improvements at the five (5) locations identified in the Location Map ponding issues. All plans and designs are to be prepared with English values in accordance with the FDOT Plans Preparation Manual and CADD Production Criteria Handbook. The Consultant is to provide all CADD project files to the city at the conclusion of the project.

II. SCOPE OF WORK

Construction Plans

CHA will prepare the following sheets necessary to convey the intent and scope of the project for the purposes of construction, based on the information received:

Key Sheet
Summary of Pay Items
General Notes
Roadway / Grading and Drainage Sheet
Special Details Sheet
Signing and Pavement Markings Sheet
Temporary Traffic Control Sheet

Drainage Memorandum:

- Document existing drainage issues and solutions into report format
- Include documentation for all the drainage design tasks and associated meetings and decisions.

Coordinate fully with the City of Doral's staff. All activities and submittals should be coordinated through the City's Project Manager.

Coordination:

Coordinate with the City, with the Stormcrete supplier and with all disciplines during design process.

Technical Meetings

A maximum of two (2) meetings are anticipated with the City.

Supervision

Includes all efforts required to supervise all technical drainage design activities.

Other services

Include topographic survey of the project areas.

Exclusions

- Subsurface Utility Engineering (SUE)
- As-built survey
- Geotechnical investigation.
- Permit coordination.
- Technical Special Provisions

III. SCHEDULE OF WORK – TIME OF PERFORMANCE

Consultant shall submit the Deliverables and perform the Work as depicted in the tables below

SCHEDULE OF DELIVERABLES				
Task or Activity ID #	Task Name and/or Activity Description	Duration (weeks)	Projected Start Date	Projected Finish Date
1	90% Design	3	NTP	NTP + 3 weeks
2	City of Doral Review	1	NTP + 3 weeks	NTP + 4 weeks
3	100% Design	2	NTP + 4 weeks	NTP + 6 weeks
Total Project Duration = 6 weeks				

METHOD OF COMPENSATION:

Task	Labor Fee	Consultant/ Sub-Consultant	Payment Method
Design Services	\$22,226.00	CHA Consulting, Inc.	Lump Sum
Survey	\$7,613.60	Longitude Surveyors	Lump Sum
Task Total	\$29,839.60		

CONSULTANT'S Project Manager for this Work Order assignment will be **Angela Baron-Ruiz, P.E.**

Submitted by:



Arnelio Alfonso, P.E.
Water Resources Team Leader, CHA Consulting, Inc.

Reviewed and approval in concept recommended by:

Darlin Perez (PW)

Digitally signed by Darlin Perez (PW)
DN: CN=Darlin Perez (PW),
OU=PublicWorks Staff,
OU=Departments, OU=City, DC=doral,
DC=local
Date: 2023.09.05 14:37:44-0400'

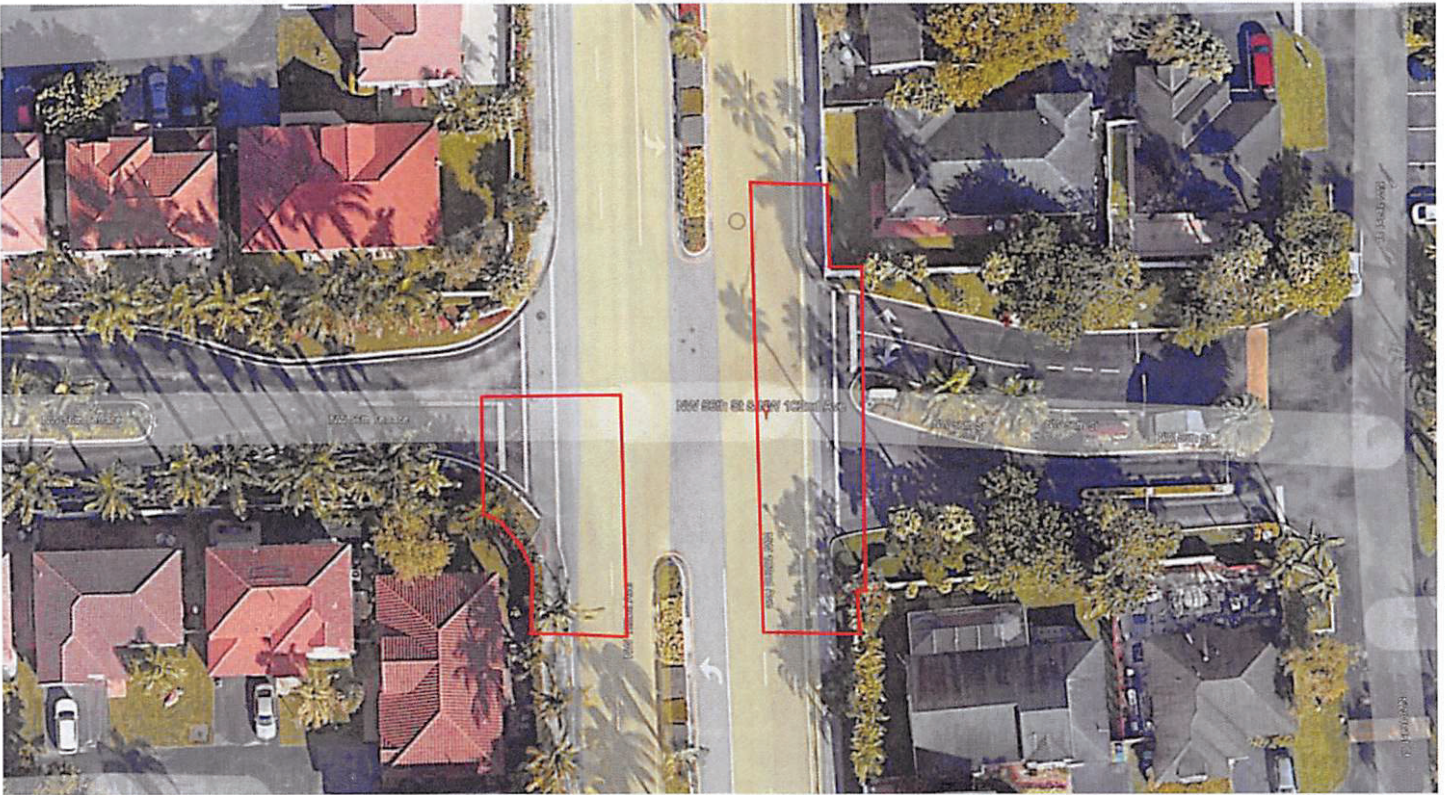
Darlin Perez, P.E.
City of Doral Chief of Engineering



FIGURE 1
LOCATION MAP

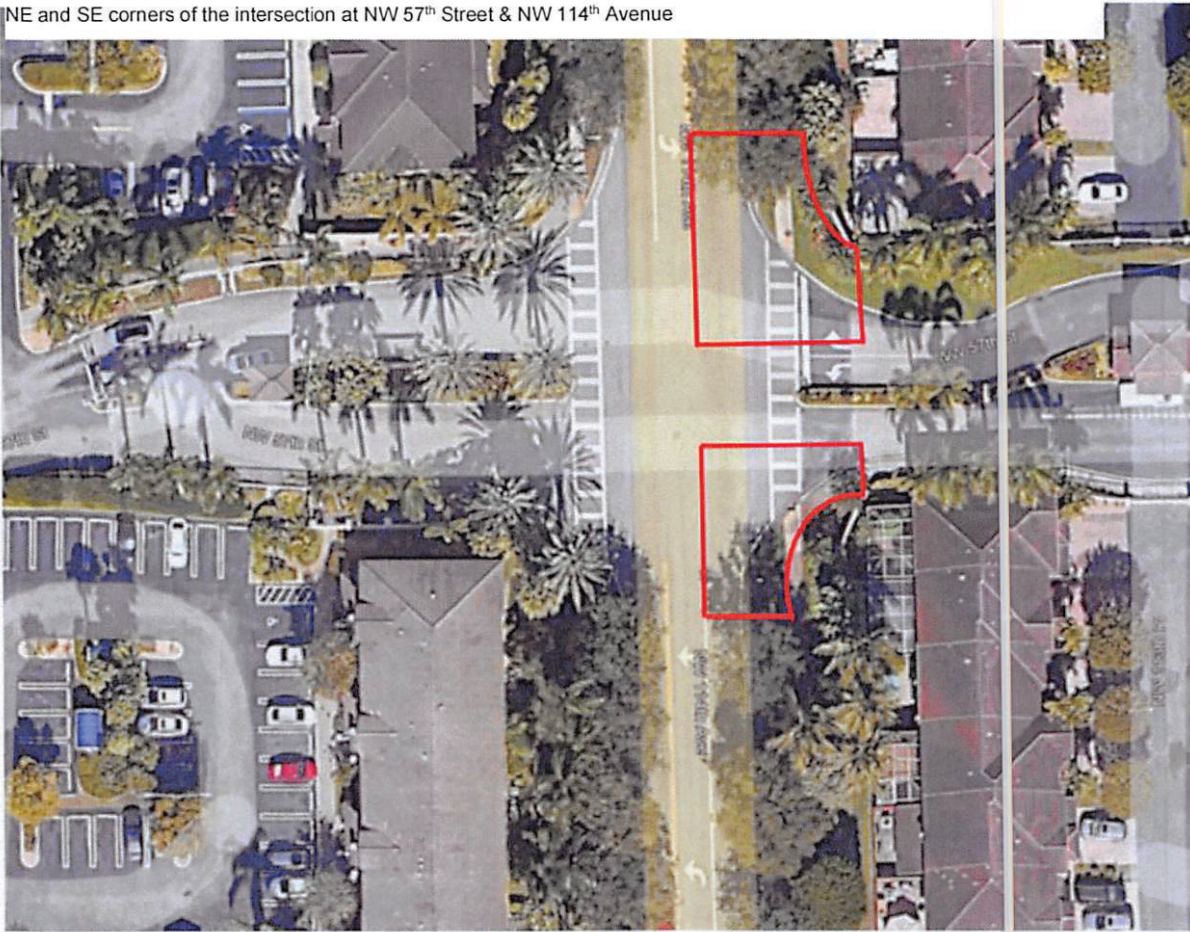


SW, NE, and SE corners of the intersection at NW 56th Street & Northwest 102nd Avenue



8935 NW 35th Lane, Suite 200, Doral, FL 33172
T 305.592.7283 • www.chacompanies.com

NE and SE corners of the intersection at NW 57th Street & NW 114th Avenue



CIWA

FEE PROPOSAL

Task	Rate Per Hour	Activity	By	Cost	SALARY RELATED COSTS										Total Staff Hours	
					Survey Field Days by Subcontractor	1 - Person Crew	Overhead	Operating Margin	FCM (Fees/Costs Capital Cost)	Expenses	Subtotal Estimated Fee	Optional Services	Grand Total Estimated Fee			
3 Project General and Project Common Tasks	\$0.00			\$0.00	\$0.00	\$0.00	\$0.00	\$0.00	\$0.00	\$0.00	\$0.00	\$0.00	\$0.00	\$0.00	\$0.00	1
4 Roadway Analysis	\$7,647			\$7,647	\$0.00	\$0.00	\$0.00	\$0.00	\$0.00	\$0.00	\$0.00	\$0.00	\$0.00	\$0.00	\$0.00	49
5 Roadway Plans	\$1,092.53			\$5,805	\$0.00	\$0.00	\$0.00	\$0.00	\$0.00	\$0.00	\$0.00	\$0.00	\$0.00	\$0.00	\$0.00	21
6a. Drainage Analysis	\$1,151.13			\$921	\$0.00	\$0.00	\$0.00	\$0.00	\$0.00	\$0.00	\$0.00	\$0.00	\$0.00	\$0.00	\$0.00	8
6b. Drainage Plans	\$1,151.13			\$1,842	\$0.00	\$0.00	\$0.00	\$0.00	\$0.00	\$0.00	\$0.00	\$0.00	\$0.00	\$0.00	\$0.00	16
7. Utilities	\$1,132.92			\$2,848	\$0.00	\$0.00	\$0.00	\$0.00	\$0.00	\$0.00	\$0.00	\$0.00	\$0.00	\$0.00	\$0.00	25
8 Environmental Permits, Compliance & Clearances	\$0.00			\$0.00	\$0.00	\$0.00	\$0.00	\$0.00	\$0.00	\$0.00	\$0.00	\$0.00	\$0.00	\$0.00	\$0.00	3
9 Structures - Misc. Tasks, Dwg's, Non-Tech	\$0.00			\$0.00	\$0.00	\$0.00	\$0.00	\$0.00	\$0.00	\$0.00	\$0.00	\$0.00	\$0.00	\$0.00	\$0.00	16
10 Structures - Bridge Development Report	\$0.00			\$0.00	\$0.00	\$0.00	\$0.00	\$0.00	\$0.00	\$0.00	\$0.00	\$0.00	\$0.00	\$0.00	\$0.00	2
11 Structures - Temporary Bridge	\$0.00			\$0.00	\$0.00	\$0.00	\$0.00	\$0.00	\$0.00	\$0.00	\$0.00	\$0.00	\$0.00	\$0.00	\$0.00	4
12 Structures - Short Span Concrete Bridge	\$0.00			\$0.00	\$0.00	\$0.00	\$0.00	\$0.00	\$0.00	\$0.00	\$0.00	\$0.00	\$0.00	\$0.00	\$0.00	3
13 Structures - Medium Span Concrete Bridge	\$0.00			\$0.00	\$0.00	\$0.00	\$0.00	\$0.00	\$0.00	\$0.00	\$0.00	\$0.00	\$0.00	\$0.00	\$0.00	8
14 Structures - Segmental Concrete Bridge	\$0.00			\$0.00	\$0.00	\$0.00	\$0.00	\$0.00	\$0.00	\$0.00	\$0.00	\$0.00	\$0.00	\$0.00	\$0.00	4
15 Structures - Arch Bridge	\$0.00			\$0.00	\$0.00	\$0.00	\$0.00	\$0.00	\$0.00	\$0.00	\$0.00	\$0.00	\$0.00	\$0.00	\$0.00	10
16 Structures - Moveable Span	\$0.00			\$0.00	\$0.00	\$0.00	\$0.00	\$0.00	\$0.00	\$0.00	\$0.00	\$0.00	\$0.00	\$0.00	\$0.00	3
17 Structures - Retaining Walls	\$0.00			\$0.00	\$0.00	\$0.00	\$0.00	\$0.00	\$0.00	\$0.00	\$0.00	\$0.00	\$0.00	\$0.00	\$0.00	8
18 Structures - Miscellaneous	\$0.00			\$0.00	\$0.00	\$0.00	\$0.00	\$0.00	\$0.00	\$0.00	\$0.00	\$0.00	\$0.00	\$0.00	\$0.00	1
19 Signing & Pavement Marking Analysis	\$1,100.08			\$1,321	\$0.00	\$0.00	\$0.00	\$0.00	\$0.00	\$0.00	\$0.00	\$0.00	\$0.00	\$0.00	\$0.00	2
20 Signing & Pavement Marking Plans	\$1,115.13			\$1,842	\$0.00	\$0.00	\$0.00	\$0.00	\$0.00	\$0.00	\$0.00	\$0.00	\$0.00	\$0.00	\$0.00	16
21 Signalization Analysis	\$0.00			\$0.00	\$0.00	\$0.00	\$0.00	\$0.00	\$0.00	\$0.00	\$0.00	\$0.00	\$0.00	\$0.00	\$0.00	0
22 Signalization Plans	\$0.00			\$0.00	\$0.00	\$0.00	\$0.00	\$0.00	\$0.00	\$0.00	\$0.00	\$0.00	\$0.00	\$0.00	\$0.00	0
23 Lighting Analysis	\$0.00			\$0.00	\$0.00	\$0.00	\$0.00	\$0.00	\$0.00	\$0.00	\$0.00	\$0.00	\$0.00	\$0.00	\$0.00	0
24 Lighting Plans	\$0.00			\$0.00	\$0.00	\$0.00	\$0.00	\$0.00	\$0.00	\$0.00	\$0.00	\$0.00	\$0.00	\$0.00	\$0.00	0
25 Landscape Architecture Analysis	\$0.00			\$0.00	\$0.00	\$0.00	\$0.00	\$0.00	\$0.00	\$0.00	\$0.00	\$0.00	\$0.00	\$0.00	\$0.00	0
26 Landscape Architecture Plans	\$0.00			\$0.00	\$0.00	\$0.00	\$0.00	\$0.00	\$0.00	\$0.00	\$0.00	\$0.00	\$0.00	\$0.00	\$0.00	0
27 Survey (Field & Office Support)	\$0.00			\$0.00	\$0.00	\$0.00	\$0.00	\$0.00	\$0.00	\$0.00	\$0.00	\$0.00	\$0.00	\$0.00	\$0.00	0
28 Photogrammetry	\$0.00			\$0.00	\$0.00	\$0.00	\$0.00	\$0.00	\$0.00	\$0.00	\$0.00	\$0.00	\$0.00	\$0.00	\$0.00	0
29 Mapping	\$0.00			\$0.00	\$0.00	\$0.00	\$0.00	\$0.00	\$0.00	\$0.00	\$0.00	\$0.00	\$0.00	\$0.00	\$0.00	0
30 Technical Model LIDAR	\$0.00			\$0.00	\$0.00	\$0.00	\$0.00	\$0.00	\$0.00	\$0.00	\$0.00	\$0.00	\$0.00	\$0.00	\$0.00	0
31 Architecture Development	\$0.00			\$0.00	\$0.00	\$0.00	\$0.00	\$0.00	\$0.00	\$0.00	\$0.00	\$0.00	\$0.00	\$0.00	\$0.00	0
32 Noise Barriers Impact Design Assessment	\$0.00			\$0.00	\$0.00	\$0.00	\$0.00	\$0.00	\$0.00	\$0.00	\$0.00	\$0.00	\$0.00	\$0.00	\$0.00	0
33 Intelligent Transportation Systems Analysis	\$0.00			\$0.00	\$0.00	\$0.00	\$0.00	\$0.00	\$0.00	\$0.00	\$0.00	\$0.00	\$0.00	\$0.00	\$0.00	0
34 Intelligent Transportation Systems Plans	\$0.00			\$0.00	\$0.00	\$0.00	\$0.00	\$0.00	\$0.00	\$0.00	\$0.00	\$0.00	\$0.00	\$0.00	\$0.00	0
35 Geotechnical	\$0.00			\$0.00	\$0.00	\$0.00	\$0.00	\$0.00	\$0.00	\$0.00	\$0.00	\$0.00	\$0.00	\$0.00	\$0.00	0
Subtotal	\$22,226.00			\$22,226.00	\$0.00	\$0.00	\$0.00	\$0.00	\$0.00	\$0.00	\$0.00	\$0.00	\$0.00	\$0.00	\$0.00	197
Grand Total Estimated Fee	\$22,226.00			\$22,226.00	\$0.00	\$0.00	\$0.00	\$0.00	\$0.00	\$0.00	\$0.00	\$0.00	\$0.00	\$0.00	\$0.00	198

Notes:
 1. This sheet to be used by Prime Consultant to calculate the Grand Total fee.
 2. Manually enter fee from each subcontractor. (Unused subcontractor rows may be hidden.)

Survey Field Days by Subcontractor
 1 - Person Crew

0 days @ \$ / day
 0 crew

0%
 0%
 0.00%

OPERATING MARGIN
 FCM (Fees/Costs Capital Cost)
 EXPENSES
 SUBTOTAL ESTIMATED FEE
 Optional Services
 GRAND TOTAL ESTIMATED FEE

Check = \$22,226.00

ESTIMATE OF WORK EFFORT AND COST - PRIME CONSULTANT

Consultant Name: CHA Consulting, Inc.
 Date: 8/25/2023
 Estimator: Alejandro Leon, PE & Angela Barron-Ruiz, PE

Name of Project: Somerville Installation Improvements
 County: MA
 FPN: 180
 FAP No.: 180

Project Activity 4: Roadway Analysis

Estimator: Alejandro Leon, PE

Stormcrete Installation Improvements

TBD

Representing	Print Name	Signature / Date
City of Doral	Darlin Perez, PE	
Consultant Name	CHA Consulting, Inc.	

NOTE: Signature Block is optional, per District preference

Task No.	Task	Units	No of Units	Hours/ Unit	Total Hours	Comments
4.1	Typical Section Package	LS	1	0	0	No Typical Section Required
4.2	Pavement Type Selection Report	LS	1	0	0	N/A
4.3	Pavement Design Package	LS	1	0	0	N/A
4.4	Cross-Slope Correction	LS	1	0	0	N/A
4.5	Horizontal /Vertical Master Design Files	LS	1	21	21	
4.6	Access Management	LS	1	0	0	N/A
4.7	Roundabout Evaluation	LS	1	0	0	N/A
4.8	Roundabout Final Design Analysis	LS	1	0	0	N/A
4.9	Cross Section Design Files	LS	1	0	0	N/A
4.10	Traffic Control Analysis	LS	1	12	12	Level 1 TTCP
4.11	Master TCP Design Files	LS	1	10	10	
4.12	Design Variations and Exceptions	LS	1	0	0	N/A
4.13	Design Report	LS	1	0	0	N/A
4.14	Quantities	LS	1	8	8	
4.15	Cost Estimate	LS	1	3	3	
4.16	Technical Special Provisions	LS	1	0	0	
4.17	Other Roadway Analyses	LS	1	0	0	
Roadway Analysis Technical Subtotal					54	

Project Activity 4: Roadway Analysis

Task No.	Task	Units	No of Units	Hours/ Unit	Total Hours	Comments
4.18	Field Reviews	LS	1	4	4	2 people, 2 hours
4.19	Monitor Existing Structures	LS	1	0	0	
4.20	Technical Meetings	LS	1	0	0	
4.21	Quality Assurance/Quality Control	LS	%	5%	3	
4.22	Independent Peer Review	LS	%	0%	0	
4.23	Supervision	LS	%	5%	3	
Roadway Analysis Nontechnical Subtotal					10	
4.24	Coordination	LS	%	5%	3	
4. Roadway Analysis Total					67	

Technical Meetings	Units	No of Units	Hours/ Unit	Total Hours	PM Attendance at Meeting Required?	Number
Typical Section	EA	0	0	0		0
Pavement	EA	0	0	0		0
Access Management	EA	0	0	0		0
15% Line and Grade	EA	0	0	0		0
Driveways	EA	0	0	0		0
Local Governments (cities, counties, MPO)	EA	1	1	1	no	0
Work Zone Traffic Control	EA	0	0	0		0
60 and 90% Comment Review Meetings	EA	1	1	1		0
Other Meetings (PS&E Meeting)	EA	0	0	0		0
Subtotal Technical Meetings				2		0
Progress Meetings (if required by FDOT)	EA	0	0	0	PM attendance at Progress Meetings is manually entered on General Task 3	--
Phase Review Meetings	EA	0	0	0	PM attendance at Phase Review Meetings is manually entered on General Task 3	--
Total Meetings				2	Total Project Manager Meetings (carries to Tab 3)	0

Carries to 4.17

Carries to Tab 3

Project Activity 5: Roadway Plans

Estimator: Alejandro Leon, PE

Stormcrete Installation Improvements

TBD

Representing	Print Name	Signature / Date
City of Doral	Darlin Perez, PE	
Consultant Name	CHA Consulting, Inc.	

NOTE: Signature Block is optional, per District preference

Task No.	Task	Scale	Units	No. of Units or Sheet	Hours/ Unit or Sheet	Total Hours	Comments
5.1	Key Sheet		Sheet	1	4	4	
5.2	Summary of Pay Items Including Quantity Input		Sheet	1	2	2	
5.3	Typical Section Sheets						
5.3.1	Typical Sections		EA	0	0	0	N/A
5.3.2	Typical Section Details		EA	1	6	6	Pavement Detail and Curb detail
5.4	General Notes/Pay Item Notes		Sheet	1	4	4	
5.5	Summary of Quantities Sheets		Sheet	2	4	8	
5.6	Project Layout		Sheet	0	0	0	
5.7	Plan/Profile Sheet		Sheet	0	0	0	
5.8	Profile Sheet		Sheet	0	0	0	
5.9	Plan Sheet	1 = 40	Sheet	2	3	6	
5.10	Special Profile		Sheet	0	0	0	
5.11	Back-of-Sidewalk Profile Sheet		Sheet	0	0	0	
5.12	Interchange Layout Sheet		Sheet	0	0	0	
5.13	Ramp Terminal Details (Plan View)		Sheet	0	0	0	
5.14	Intersection Layout Details		Sheet	0	0	0	
5.15	Special Details		EA	1	4	4	
5.16	Cross-Section Pattern Sheet(s)		Sheet	0	0	0	

Project Activity 5: Roadway Plans

Task No.	Task	Scale	Units	No. of Units or Sheet	Hours/ Unit or Sheet	Total Hours	Comments
5.17	Roadway Soil Survey Sheet(s)		Sheet	0	0	0	
5.18	Cross Sections		EA	0	0	0	
5.19	Temporary Traffic Control Plan Sheets		Sheet	0	0	0	
5.20	Temporary Traffic Control Cross Section Sheets		EA	0	0	0	
5.21	Temporary Traffic Control Detail Sheets		Sheet	2	4	8	Phasing and MOT details
5.22	Utility Adjustment Sheets		Sheet	2	3	6	
5.23	Selective Clearing and Grubbing Sheet(s)		Sheet	0	0	0	
5.24	Project Network Control Sheet(s)		Sheet	0	0	0	
5.25	Environmental Detail Sheets		Sheet	0	0	0	
5.26	Utility Verification Sheet(s) (SUE Data)		Sheet	0	0	0	
Roadway Plans Technical Subtotal						48	
5.27	Quality Assurance/Quality Control		LS	%	5%	2	
5.28	Supervision		LS	%	5%	2	
5. Roadway Plans Total						52	

Project Activity 6a: Drainage Analysis

Estimator: Angela Baron-Ruiz, P.E.

Stormcrete Installation Improvements
TBD

Representing	Print Name	Signature / Date
City of Doral	Darlin Perez, PE	
Consultant Name	CHA Consulting, Inc.	

NOTE: Signature Block is optional, per District preference

Task No.	Task	Units	No of Units	Hours/ Unit	Total Hours	Comments
6a.1	Drainage Map Hydrology	Per Map	0	0	0	
6a.2	Base Clearance Report	Per Location	0	0	0	
6a.3	Pond Siting Analysis and Report	Per Basin	0	0	0	
6a.4	Design of Cross Drains	EA	0	0	0	
6a.5	14	Per Ditch Mile	0	0	0	
6a.6	Design of Stormwater Management Facility (Offsite or Infield Pond)	EA	0	0	0	
6a.7	Design of Stormwater Management Facility (Roadside Ditch as Linear Pond)	Per Cell	0	0	0	
6a.8	Design of Floodplain Compensation	Per Floodplain Basin	0	0	0	
6a.9	Design of Storm Drains	EA	0	0	0	
6a.10	Optional Culvert Material	EA	0	0	0	
6a.11	French Drain Systems	Per Cell	0	0	0	
6a.12	Drainage Wells	EA	0	0	0	
6a.13	Drainage Design Documentation Report	LS	1	8	8	Drainage Memorandum Documenting Improvements
6a.14	Bridge Hydraulic Report	EA	0	0	0	

Project Activity 6a: Drainage Analysis

Task No.	Task	Units	No of Units	Hours/ Unit	Total Hours	Comments
6a.15	Temporary Drainage Analysis	LS	0	0	0	
6a.16	Cost Estimate	LS	1	0	0	
6a.17	Technical Special Provisions	LS	1	0	0	
6a.18	Other Drainage Analysis	LS	1	0	0	
Drainage Analysis Technical Subtotal					8	
6a.19	Field Reviews	LS	0	0	0	
6a.20	Technical Meetings	LS	0	0	0	Meetings are listed below
6a.21	Environmental Look-Around (ELA) Meeting	LS	0	0	0	
6a.22	Quality Assurance/Quality Control	LS	%	5%	0	
6a.23	Independent Peer Review	LS	%	0%	0	
6a.24	Supervision	LS	%	5%	0	
Drainage Analysis Nontechnical Subtotal					0	
6a.25	Coordination	LS	%	5%	0	
6a. Drainage Analysis Total					8	

Technical Meetings	Units	No of Units	Hours/ Unit	Total Hours	PM Attendance at Meeting Required?	Number
Base Clearance Water Elevation	EA	0	0	0		0
Pond Siting	EA	0	0	0		0
Agency (City of Doral)	EA	2	0.5	1		0
Local Governments (cities, counties)	EA	0	0	0		0
FDOT Drainage	EA	0	0	0		0
Other Meetings	EA	0	0	0		0
Subtotal Technical Meetings				1		0
Progress Meetings (if required by FDOT)	EA	0	0	0	PM attendance at Progress Meetings is manually entered on General Task 3	--
Phase Review Meetings	EA	0	0	0	PM attendance at Phase Review Meetings is manually entered on General Task 3	--
Total Meetings				1	Total Project Manager Meetings (carries to Tab 3)	0

Carries to 6.19

Carries to Tab 3

6b. Drainage Plans

Estimator: Angela Baron-Ruiz, PE

Stormcrete Installation Improvements

TBD

Representing	Print Name	Signature / Date
City of Doral	Darlin Perez, PE	
Consultant Name	CHA Consulting, Inc.	

NOTE: Signature Block is optional, per District preference

Task No.	Task	Scale	Units	No. of Units or Sheet	Hours/ Unit or Sheet	Total Hours	Comments
6b.1	Drainage Map (Including Interchanges)	50	Sheet	2	5	10	Drainage Maps for the 5 locations
6b.2	Bridge Hydraulics Recommendation Sheets		Sheet	0	0	0	
6b.3	Summary of Drainage Structures		Sheet	0	0	0	
6b.4	Optional Pipe/Culvert Material		Sheet	0	0	0	
6b.5	Drainage Structure Sheet(s) (Per Structure)		EA	0	0	0	
6b.6	Miscellaneous Drainage Detail Sheets		Sheet	1	4	4	
6b.7	Lateral Ditch Plan/Profile		Sheet	0	0	0	
6b.8	Lateral Ditch Cross Sections		EA	0	0	0	
6b.9	Retention/Detention Ponds Detail Sheet(s)		Sheet	0	0	0	
6b.10	Retention Pond Cross Sections		EA	0	0	0	
6b.11	Erosion Control Plan Sheet(s)		Sheet	0	0	0	
6b.12	SWPPP Sheet(s)		Sheet	0	0	0	
Drainage Plans Technical Subtotal						14	
6b.13	Quality Assurance/Quality Control		LS	%	5%	1	
6b.14	Supervision		LS	%	5%	1	
6. Drainage Plans Total						16	

Project Activity 7: Utilities

Estimator: Alejandro Leon, PE

Stormcrete Installation Improvements
TBD

Representing	Print Name	Signature / Date
City of Doral	Darlin Perez, PE	
Consultant Name	CHA Consulting, Inc.	

NOTE: Signature Block is optional, per District preference

Task No.	Task	Units	No of Units	Hours/ Unit	Total Hours	Comments
7.1	Utility Kickoff Meeting	LS	1	1	1	
7.2	Identify Existing Utility Agency Owners (UAO(s))	LS	0	0	0	
7.3	Make Utility Contacts	LS	1	6	6	
7.4	Exception Processing	LS	0	0	0	
7.5	Preliminary Utility Meeting	LS	0	0	0	
7.6	Individual/Field Meetings	LS	0	0	0	
7.7	Collect and Review Plans and Data from UAO(s)	LS	1	6	6	Collect and review UAO plans
7.8	Subordination of Easements Coordination	LS	0	0	0	
7.9	Utility Design Meeting	LS	0	0	0	
7.10	Review Utility Markups & Work Schedules, and Processing of Schedules & Agreements	LS	1	2	2	Assume 2 UWS will be required including relocation of FPL light pole
7.11	Utility Coordination/Followup	LS	1	5	5	Follow up with 5 UAOs
7.12	Utility Constructability Review	LS	0	0	0	
7.13	Additional Utility Services	LS	0	0	0	
7.14	Processing Utility Work by Highway Contractor (UWHC)	LS	0	0	0	
7.15	Contract Plans to UAO(s)	LS	0	0	0	
7.16	Certification/Close-Out	LS	1	5	5	Assume 10 UAOs
7.17	Other Utilities	LS	0	0	0	
7. Utilities Total					25	

Project Activity 7: Utilities

Technical Meetings	Units	No of Units	Hours/ Unit	Total Hours	PM Attendance at Meeting Required?	Number
Kickoff (see 7.1)	EA	0	0	0		0
Preliminary Meeting (see 7.5)	EA	0	0	0		0
Individual UAO Meetings (see 7.6)	EA	0	0	0		0
Field Meetings (see 7.6)	EA	0	0	0		0
Design Meeting (see 7.9)	EA	0	0	0		0
Other Meetings (this is automatically added into Utilities Total (cell F27))	EA	0	0	0		0
Total Meetings				0	Total Project Manager Meetings (carries to Tab 3)	0

Project Activity 19: Signing and Pavement Marking Analysis

Estimator: Alejandro Leon, PE

Stormcrete Installation Improvements
TBD

Representing	Print Name	Signature / Date
City of Doral	Darlin Perez, PE	
Consultant Name	CHA Consulting, Inc.	

NOTE: Signature Block is optional, per District preference

Task No.	Task	Units	No. of Units	Hours/ Units	Total Hours	Comments
19.1	Traffic Data Analysis	LS	1	0	0	
19.2	No Passing Zone Study	LS	1	0	0	
19.3	Reference and Master Design File	LS	1	8	8	
19.4	Multi-Post Sign Support Calculations	EA	1	0	0	
19.5	Sign Panel Design Analysis	EA	1	0	0	
19.6	Sign Lighting/Electrical Calculations	EA	1	0	0	
19.7	Quantities	LS	1	2	2	
19.8	Cost Estimate	LS	1	1	1	
19.9	Technical Special Provisions	LS	1	0	0	
19.10	Other Signing and Pavement Marking	LS	1	0	0	
Signing and Pavement Marking Analysis Technical Subtotal					11	
19.11	Field Reviews	LS	0	0	0	
19.12	Technical Meetings	LS	0	0	0	
19.13	Quality Assurance/Quality Control	LS	%	5%	1	
19.14	Independent Peer Review	LS	%	0%	0	
19.15	Supervision	LS	%	5%	1	
Signing and Pavement Marking Analysis Nontechnical Subtotal					2	
19.16	Coordination	LS	%	2%	0	
19. Signing and Pavement Marking Analysis Total					13	

Technical Meetings	Units	No of Units	Hours/ Unit	Total Hours	PM Attendance at Meeting Required?	Number

Project Activity 19: Signing and Pavement Marking Analysis

Task No.	Task	Units	No. of Units	Hours/ Units	Total Hours	Comments	
	Sign Panel Design	EA	0	0	0		0
	Queue Length Analysis	EA	0	0	0		0
	Local Governments (cities, counties)	EA	0	0	0	yes	0
	Other Meetings	EA	0	0	0		0
	Subtotal Technical Meetings				0		Subtotal Project Manager Meetings
	Progress Meetings (if required by FDOT)	EA	0	0	0	<i>PM attendance at Progress Meetings is manually entered on General Task 3</i>	--
	Phase Review Meetings	EA	0	0	0	<i>PM attendance at Phase Review Meetings is manually entered on General Task 3</i>	--
	Total Meetings				0	Total Project Manager Meetings (carries to Tab 3)	0

Project Activity 20: Signing and Pavement Marking Plans

Estimator: Alejandro Leon, PE

Stormcrete Installation Improvements

TBD

8125 NW 54th ST Drainage Improvements

Representing	Print Name	Signature / Date
City of Doral	Darlin Perez, PE	
Consultant Name	CHA Consulting, Inc.	

NOTE: Signature Block is optional, per District preference

Task No.	Task	Scale	Units	No of Units	Hours/Unit	No. of Sheets	Total Hours	Comments
20.1	Key Sheet		Sheet	1	4	1	4	
20.2	Summary of Pay Items Including TRNS-Port Input		LS	0	0	0	0	
20.3	Tabulation of Quantities		Sheet	1	4	1	4	
20.4	General Notes/Pay Item Notes		Sheet	1	2	1	2	
20.5	Project Layout		Sheet	0	0	0	0	
20.6	Plan Sheet		Sheet	2	2	2	4	
20.7	Typical Details		EA	0	0	0	0	
20.8	Guide Sign Worksheet(s)		EA	0	0	0	0	
20.9	Traffic Monitoring Site		EA	0	0	0	0	
20.10	Cross Sections		EA	0	0	0	0	
20.11	Special Service Point Details		EA	0	0	0	0	
20.12	Special Details		LS	0	0	0	0	
20.13	Interim Standards		LS	0	0	0	0	
Signing and Pavement Marking Plans Technical Subtotal						5	14	
20.14	Quality Assurance/Quality Control		LS	%	5%		1	
20.15	Supervision		LS	%	5%		1	
20. Signing and Pavement Marking Plans Total						5	16	



Friday, September 01, 2023

Ms. Angela M. Baron-Ruiz, PE*, ENV SP
Project Manager | Senior Engineer
abaron@chacompanies.com



8935 Northwest 35 lane, Suite 200
Doral, FL 33172
786.257.3084

RE: Surveying and Mapping services for 4 intersection corners located in Doral, FL 33178.

Dear Ms. Baron-Ruiz,

Pursuant to your request regarding a fee estimate for Surveying and Mapping services for the above-referenced project, LONGITUDE SURVEYORS, LLC (LS) is pleased to submit the following proposal for your consideration.

A. SCOPE OF WORK – TOPOGRAPHIC SURVEY

- LS will show rights-of-way computing field evidence, plats, deeds, and other documentation relative to the project. Lot lines and ownership lines, inclusive of locations, bearings, and dimensions, within the survey limits will be shown graphically.
- LS will show any easements, covenants, restrictions, etc. that can be found on plats, deeds, and other public records relative to the project. However, without a Title Commitment or Title Search there is no guarantee that easements, covenants, restrictions, etc. will be shown on the survey.
- LS will establish horizontal and vertical control within the limits of the survey.
- The survey will be geo-referenced to the Florida State Plane Coordinate System based on the North American Datum of 1983/2011 (NAD83/11).
- Elevations will be referenced to the North American Vertical Datum of 1988 (NAVD88).
- LS will collect all significant aboveground improvements including but not limited to; pavement, driveways, edge of pavement lines, sidewalks, walkways, slabs, guard rails, trees and palms, hedges, poles, light poles, drainage inlets (manholes, catch basins, etc.), tops of underground vaults/boxes, fences, walls, columns, signs, utilities, and any other significant above-ground improvements within the survey limits.
- LS will identify and collect curb and gutter joint locations within the survey limits.
- Elevations will be collected equivalent to a twenty-five (25) foot grid throughout the survey limits and will include, at a minimum, the crown of road, edge of pavement, utilities, tops of underground vaults/boxes, walkways, top of curb and driveway elevations at right-of-way lines. Elevations will be collected equivalent to a ten (10) foot grid up to a ten (10) foot perimeter beyond the survey limits. Additional elevations will be collected sufficient to identify all grade changes and features of interest within the survey limits.

B. SURVEY LIMITS:

The Northeast and Southeast corners of the intersection at Northwest 57 Street & Northwest 114 Avenue. The Southwest, Northeast, and Southeast corners of the intersection at Northwest 56 Street & Northwest 102 Avenue. Survey Limits on both sites to extend from the right-of-way up to the centerline of adjacent roadways. As per the attached Exhibit provided by the Client.

C. DELIVERABLES:

LS will provide a digitally signed and sealed PDF of the resulting survey. The survey shall be prepared in Microstation Version SS10. Signed and sealed hardcopies can be provided upon request.

D. TIME & COST:

The total professional fee to complete the **Scope of Work** described herein shall be a lump sum of **\$7,613.60**. LS has estimated eight (8) business days from the date of Notice to Proceed (NTP) to complete these tasks. Notice to Proceed (NTP) is considered effective twenty-four (24) hours after this proposal agreement has been executed and returned to the undersigned.



I agree that by signing below "I APPROVE AND ACCEPT" this proposal as a legal binding contract.

By: _____
(Authorized Signature)

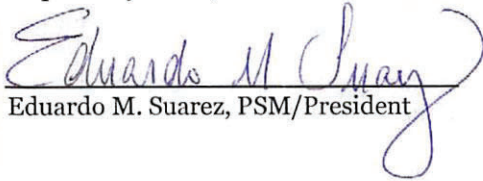
Date: _____

(Typed or printed name)

Title: _____

On behalf of the firm, I thank you for the opportunity to present this proposal. We look forward to utilizing our best professional efforts on your behalf on this very important project.

Respectfully Yours,


Eduardo M. Suarez, PSM/President



TERMS AND CONDITIONS

1. **Time of Delivery:** "LS" intends to deliver requested surveys within the approximate calendar days specified on the Letter of Proposal from receipt of written Authorization to Proceed from "Client". The delivery date may change if "Client" does not deliver all requisite documents within the specified time, such as title documents (including but not limited to the title commitment and all necessary supportive documents). "LS" requires a minimum of 5 business days to deliver the first draft of survey after receipt of title and supporting documentation. It is understood that delays may be encountered for weather (or acts of God), property line conflicts, excessive items in title commitments, delays in receiving title commitments and review of comments from title examiner/attorneys. If "LS" experiences any delay in complying with this deadline, "LS" will advise "Client" in a timely manner.
 - a) **Delivery/Receipt of Title Commitments:** Two (2) hard copies of the current title commitment or one copy by email (including copies of all supportive documents, vesting deeds and ad joiner deeds) upon which to base the surveys will be delivered to "LS" within one (1) week after authorization to proceed. In the event title reports are delayed, then the time of delivery noted in each Letter of proposal shall be extended one day for every day the title report is late. "LS" will require a minimum of 5 business days to deliver the first draft of survey after receipt of title and supporting documents.
 - b) **Survey Delivery Procedure:** Up to six (6) first draft prints of survey will be delivered or forwarded via email to "Client" or as directed by "Client" to other parties in the transaction. If requested by "Client" and if possible, the first draft of survey will be delivered or emailed whether or not title commitments are available. If the title commitment is not available, that fact will be noted on the survey draft. Prints of survey of a second draft incorporating all of "LS's" review comments will be delivered to "Client", or as directed by "Client" to other parties in the transaction. Up to six (6) prints of the FINAL survey bearing the Surveyor's original seal and signature will be delivered to "Client", or as directed by "Client" to other parties in the transaction. Any versions or copies of the survey beyond those referenced above will be delivered in electronic format (.PDF or .TIF). "LS" WILL NOT provide AUTOCAD drawing files for surveys.
2. **Client Comments:** "Client" will collect and consolidate survey review comments from all parties with an interest in the survey and will submit one round of comments per survey site to "LS" within thirty (30) days after their receipt of the first draft of survey. The comments will be delivered to "LS" in a Word document, PDF, or Excel Spreadsheet. "LS" will then coordinate all necessary edits, revisions, redrafts, etc. under the original scope of work and redistribute the final survey. If comments are submitted to "LS" after thirty (30) days, additional charges may be charged at the discretion of "LS".
3. **Survey Fees:** "LS's" fees for providing each survey are to be itemized on the Letter of Proposal. The applicable fees are Lump Sum or Not-to-exceed amounts based upon the survey requirements, terms and conditions stated herein. The stated fees do not include sales tax, overnight delivery charges (five maximum per site), reproduction costs, telephone calls, and labor and materials incidental to the performance, preparation, and delivery of the surveys. All telephone, U.S. Mail, and overnight delivery charges to "Client" and others involved in this transaction shall be included in the survey fees for the performance of the survey work per the specification stated herein. Unless otherwise and mutually agreed to prior to acceptance by client of this proposal, LS's fees quoted herein are valid for no more than 30 days from the date noted above. A credit card deposit may be assessed for services less than two thousand dollars (\$2,000.00).
4. **Additional Services and Fees:** The following items will be subject to additional fees:
 - a) Revisions to surveys due to revised and/or proforma title commitments or to new title commitments issued by another title insurer.
 - b) Additional lands beyond the scope outlined in the original proposal.
 - c) Inclusion of appurtenant easements into a revised Schedule A of the title commitment.
 - d) Changes to the form of Surveyor's Certification subsequent to delivery of the first draft.



- e) It is understood that others, including the title company, their agents and/or branch offices, will be involved in this transaction. Any additional services requested by these others will be paid for by "Client" but only if such additional services were first approved by "Client". Such additional services may include, but are not limited to, revisions to Surveyor's certifications; reporting facts for determining compliance to zoning codes; adding and deleting areas from the scope of surveys; communicating with other parties involved in this transaction; or supplying additional copies of surveys.
5. **Payment of Fees:** The fee for each survey will become due and payable upon "Client's" receipt of the partial or complete survey and "LS's" invoice. Payment will be made within thirty (30) days of date of invoice or within five (5) days of closing. Pay-when-Paid clauses are not applicable, unless otherwise agreed to by "LS" prior to approval of this proposal. If payment is not received within said time period, then there will be an additional charge of 1.5% per month. "Client" and "LS" understand the payment for said fee is not subject to any pending real estate transaction and "LS" will be paid regardless if any pending real estate transaction closes or not. The payment for each survey shall not be contingent upon the receipt of any other survey involved in this project. It is further understood that "Client" is to satisfy "LS" invoice and shall pay "LS" directly and not the independent surveyor.
6. At times, it is possible that a work item for a site will be submitted to "Client" and completed to the extent possible based upon the information provided to "LS" by "Client". If the information provided by "Client" is incomplete, the survey may not be completed pursuant to the requirements for the services provided in this agreement due to missing documents or other information. If "Client" has not provided the missing document(s) and/or information to "LS" within 30 days after receiving the work item(s), the work item will be considered final and complete, and "LS" shall be paid in full at this time (unless otherwise agreed to in writing between the parties).
7. **Limits of Survey:** The limits of the property(ies) to be surveyed are as outlined in the information provided by "Client" with their request for proposal and as outlined in "LS's" proposal. In the event the lands included in the Schedule "A" upon receipt of the current title commitment are in conflict with the limits of said outlined property(ies) "LS" will revise their fee accordingly and seek approval from "Client" for the revised fee. If the Schedule "A" of the title commitment contains off-site appurtenant easements, then the Surveyor shall show the limits of said easements on the survey for information use only, and the limits and improvements contained therein shall not be subject to the survey requirements contained herein.
8. **Liability/Insurance:** It is understood that "LS" is employed to acquire surveys on behalf of "Client" and the actual performance of said surveys may, at "LS's" discretion, be provided via internal licensed surveyors, or use of independent surveyors licensed to practice in each corresponding state. In such instances where "LS" will act as survey coordinator on behalf of "Client", "LS" will coordinate surveys from licensed surveyors performing in accordance with state minimum standards and the "LS's" liability will be limited to managing the procurement of independent surveyors, monitoring all survey progress, communicating surveying needs to the surveyors, reviewing surveys for compliance with requirements, and delivery of final surveys to parties involved in the transaction. "LS" shall not be liable nor held responsible for data or information shown or not shown by the independent surveyors on said surveys. However, this does not limit the liability of the independent surveyor. It is also understood that "LS" will obtain evidence or certificates of insurance from each independent Surveyor prior to the commencement of any surveying work which state the independent Surveyor and his employees are covered by workmen's compensation insurance and general liability insurance (and the amounts thereof). Evidence or certificate of insurance for professional liability insurance is not a requirement for "LS" or each independent Surveyor.
9. **Parties:** It is understood that only the parties named within the Surveyor's Certification are entitled to rely on the survey and the certificate. The liability of the independent surveyor and that of "LS" is only extended to those parties.
10. **Right to Cancel:** It is understood "Client" reserves the right to cancel some or all survey orders at any time upon the following terms and conditions:
- a) "Client" will notify "LS" in writing of cancellation by email, certified mail, overnight package, or messenger delivery, which notice will be effective on the date on which it is received by "LS" (the "Cancellation Date");



- b) In the event of cancellation, "LS" will be compensated on the basis of:
- i. reasonable charges for work performed to the date which is ONE (1) business day after the Cancellation Date; and
 - ii. reasonable costs and expenses for incidentals to the date which is one (1) business day after the Cancellation Date.
11. **Right to Lean:** "LS" shall, at its sole discretion and when legally applicable, reserves the right to lean a property, in the event that payment to "LS" remains uncollected past 90 days.
12. **Confidentiality:** The information contained in this agreement and related to this project is confidential, may be attorney-client privileged, may constitute inside information, and is intended only for the use of the parties to this agreement. Unauthorized use, disclosure or copying is strictly prohibited and may be unlawful.

Acceptance: "Client" agrees with all the terms and conditions herein by their acceptance of "LS" proposal to coordinate surveys and by acknowledging Section 2 of the Survey requirements for the specific project which references these terms and conditions and the date hereof.



LONGITUDE SURVEYORS

Client Information: Kimley Horn - City of Doral
Estimate Prepared By: Eduardo M. Suarez
Project Area: Drainage Improvements
Project Length:

Job Description	Position	Rate/Hour	Hours	Total Cost
Overall Management	Senior Surveyor and Mapper	\$ 48.00	2	\$296.00
Prepare Job	Survey Technician	\$ 90.00	4	\$360.00
Horizontal & Vertical Control	Survey Field Crew (8HR Day)	\$ 71.88	8	\$1,375.04
Horizontal & Vertical Control Process	Survey Technician	\$ 90.00	4	\$360.00
Horizontal & Vertical Control Compute	Surveyor and Mapper	\$ 10.00	12	\$1,320.00
Topographic Survey	Survey Field Crew (8HR Day)	\$ 71.88	12	\$2,062.56
Topographic Survey Process	Survey Technician	\$ 90.00	2	\$180.00
Topographic Survey Drafting	CADD Technician	\$ 75.00	12	\$900.00
QA/QC	Surveyor and Mapper	\$ 10.00	2	\$220.00
QA/QC Edits/Drafting	Survey Technician	\$ 90.00	6	\$540.00
			Total	\$7,613.60



