

RESOLUTION No. 19-236**A RESOLUTION OF THE MAYOR AND THE CITY COUNCIL OF THE CITY OF DORAL, FLORIDA, APPROVING THE REVISED OUTDOOR AND CORPORATE EVENT FEE SCHEDULE FOR THE CITY OF DORAL PARKS AND RECREATION DEPARTMENT; PROVIDING FOR IMPLEMENTATION; AND PROVIDING FOR AN EFFECTIVE DATE**

WHEREAS, the City of Doral (the “City”) Parks & Recreation Department (the “department”) is currently offering spaces for outdoor and corporate events pursuant to the fee schedule set by the department and services providers and approved by the City Council in 2015; and

WHEREAS, upon review of the existing fees, the department has identified minor changes that should be made to the fee schedule for outdoor and corporate events; and

WHEREAS, Staff has recommended that the City Council adopt the fee schedule for the City of Doral Parks & Recreation Department as presented in Exhibit “A” which is attached hereto and incorporated herein by this reference;

NOW THEREFORE, BE IT RESOLVED BY THE CITY COUNCIL OF THE CITY OF DORAL, FLORIDA, AS FOLLOWS:

Section 1. Recitals. The above recitals are confirmed, adopted, and incorporated herein and made a part hereof by this reference.

Section 2. Approval of Recreation Fees. The fee schedule for the City of Doral Parks and Recreation Department, as presented in Exhibit “A”, attached hereto and incorporated herein by this reference, is hereby approved.

Section 3. Implementation. The City Manager is hereby authorized to take such action as may be necessary to implement the provisions of this Resolution.

Section 5. Effective Date. This resolution shall take effect immediately upon adoption.

The foregoing Resolution was offered by Councilmember Fraga who moved its adoption. The motion was seconded by Vice Mayor Mariaca and upon being put to a vote, the vote was as follows:

Mayor Juan Carlos Bermudez	Yes
Vice Mayor Claudia Mariaca	Yes
Councilwoman Digna Cabral	Yes
Councilman Pete Cabrera	Absent/Excused
Councilwoman Christi Fraga	Yes

PASSED AND ADOPTED this 11 day of September 2019.



JUAN CARLOS BERMUDEZ, MAYOR

ATTEST:



CONNIE DIAZ, MMC
CITY CLERK

APPROVED AS TO FORM AND LEGAL SUFFICIENCY
FOR THE USE AND RELIANCE OF THE CITY OF DORAL ONLY:



LUIS FIGUEREDO, ESQ.
CITY ATTORNEY

EXHIBIT “A”

EXHIBIT A: City of Doral Parks and Recreation Department Outdoor & Corporate Event Fees

All applicants must submit an Outdoor Event Permit to the Planning and Zoning Department before obtaining approval for an outdoor event to be held at one of our parks. All Outdoor Event requests at city parks are subject to availability. Please see below for a list of fees.

Schedule of Fees							
Number of Attendees	51 to 199	200 to 399	400 to 999	1,000 to 2,499	2,500 to 4,999	5,000 to 7,499	7,500 to 10,000
Rental Fee	\$175	\$225	\$425	\$900	\$1,350	\$2,700	\$5,400
Concession, Food, and/or Merchandise Sales	\$100	\$100	\$175	\$350	\$700	\$1,400	\$2,800
Beer and Wine On-premises	\$500	\$500	\$500	\$1,000	\$1,000	\$2,000	\$2,000
Trash Container Disposal	\$100 - \$379***	\$100 - \$379***	\$100 - \$379***	\$0	\$0	\$0	\$0
Holding Tank Cleaning*	\$0	\$0	\$300	\$600	\$600	\$1,200	\$1,200
Janitorial Supplies	\$75	\$75	\$100	\$100	\$100	\$100	\$100
Staff Fees	TBD	TBD	TBD	TBD	TBD	TBD	TBD
Athletic Field Rental Rate**	TBD	TBD	TBD	TBD	TBD	TBD	TBD
Field Preparation (Athletic)	\$20	\$20	\$20	\$20	\$20	\$20	\$20
Additional Hours Fee	\$25	\$50	\$100	\$200	\$300	\$400	\$500
Additional Parking Zone Fee	\$0	\$0	\$0	\$400	\$400	\$400	\$400

*** For Doral Central Park rentals only.**

**** See Field Rental Rates.**

***** Corporate events only.**

Security Deposits

The Planning & Zoning Department will require the following security deposit.

Maximum Attendance	Security Deposit
150	\$2,500
151-1,500	\$5,000
1,501-3,000	\$10,000
3,000+	\$20,000

Non-Profit Outdoor Event Fee Waivers

• Non-profits (501 (c) (3)) with headquarters **located within** the City of Doral are eligible to receive a fee waiver for one (1) outdoor event per calendar year per organization. Non-profits must meet the following criteria in order to qualify for the fee waiver:

- 1) Headquarters of non-profit are in the City of Doral.
- 2) Proof of non-profit status must be provided.
- 3) Event is free to the public and benefits the Doral community.
- 4) An expected attendance of 199 people or less.

• Non-profits (501 (c) (3)) with headquarters **not located within** the City of Doral are eligible to receive a 50% discount for one (1) outdoor event per calendar year per organization. Non-profits must meet the following criteria in order to qualify for the discount:

- 1) Proof of non-profit status must be provided.
- 2) Event is free to the public.
- 3) An expected attendance of 199 people or less.

Description of Fees

1. Staffing hours will be assessed for a minimum of one (1) hour prior and one (1) hour after the event for setup. Setup time will not be billed as additional hours. Additional staffing hours may be assessed if setup and breakdown period are longer.
2. Cumulative attendance for events longer than one (1) hour will be used to determine schedule of fees.
3. Events longer than six (6) hours will be charged **Additional Hour Fee** on an hourly basis.
4. Events utilizing more than one (1) parking zone will be charged an **Additional Parking Zone Fee**.
5. Events utilizing the park after the posted operating hours will be charged the **After-Hours Fee**.
6. All events are required to provide parking management. An additional **\$500 Parking Fee** will be assessed to events that do not provide parking management.
7. Additional fees from other departments may apply.
8. Staffing fees will be assessed at the hourly rates identified below.

<u>Staff Fees</u>		
<u>Position</u>	<u>Hourly Rate</u>	<u>Overtime Hourly Rate</u>
Park/Recreation Service Aide	\$14.76	\$22.14
Assistant Park Manager	\$25.98	\$38.97
Park Manager	\$29.12	\$43.68
Parks Maintenance Technician	\$29.12	\$43.68

Recreation Facility Supervisor	\$36.97	\$55.46
Parks Operations Administrator	\$36.97	\$56.46
This rate includes the City's hourly rate, FICA/MICA and retirement contributions (full-time) to salaries.		

Events between 51 to 399 Attendees

- Staffing Fees: Includes staff to perform litter control, clean park restrooms, and supervisors to ensure rules and regulations are observed.
- Janitorial Supplies: Includes trash liners, toilet paper, litter control supplies, ant killer, and cleaning supplies.
- Trash Container Disposal: Disposal of trash after event.

Events between 400 to 999 Attendees

- Trash Container Disposal: Disposal of trash after event.
- Holding Tank Cleaning: Pumping of Holding tank after event.
- Janitorial Supplies: Includes trash liners, toilet paper, litter control supplies, ant killer, and cleaning supplies.
- Staffing Fees: Includes staff to perform litter control, clean park restrooms, and supervisors to ensure rules and regulations are observed.

Events with 1,000+ Attendees

- Holding Tank Cleaning: Pumping of Holding tank after event.
- Janitorial Supplies: Includes trash liners, toilet paper, litter control supplies, ant killer, and cleaning supplies. Supplies are used to maintain the restroom buildings on-site or repair the event area.
- Staffing fees: Includes staff to supervise the event area to ensure rules and regulations are observed.
- The applicant is responsible for providing janitorial and custodial services and supplies for event.
- The applicant is responsible for waste and recycling removal for the event.
- The applicant is responsible for parking management for event.

Doral Central Park Rentals
3000 NW 87th Avenue
Doral, Florida 33178

- Maximum capacity is 10,000 for events not designated as “City signature” events.
- Events larger than 5,000 attendees may be required to provide off-site parking agreements.
- All proposed events must be requested at least three (3) months in advance.
- All of the parks amenities will remain open to public, regardless if they are attending the event or not.
- The use of outlets or any other source of power inside the park is prohibited. Organization must provide power for the event.
- Event parking cannot take place on surface lots. These lots must remain open for park visitors to use during hours of operation.



-  **Parking Zones**
-  **Rental Zones**

Doral Meadow Park Rentals

11555 NW 58th Street

Doral, Florida 33178

- 500 person daily capacity.
- Vehicles cannot be driven into the facility to drop off supplies. Coordinator must transport supplies via hand truck or dolly.
- All of the parks amenities will remain open to public, regardless if they are attending the event or not.
- Parking lot roads must remain free of obstructions (cars, supplies, etc.) in order to maintain the flow of traffic.
- Loading zones cannot be used as parking spots in case of an emergency.
- Structures cannot be staked down due to irrigation lines around the park.
- The use of outlets or any other source of power inside the park is prohibited. Organization must provide power for the event.

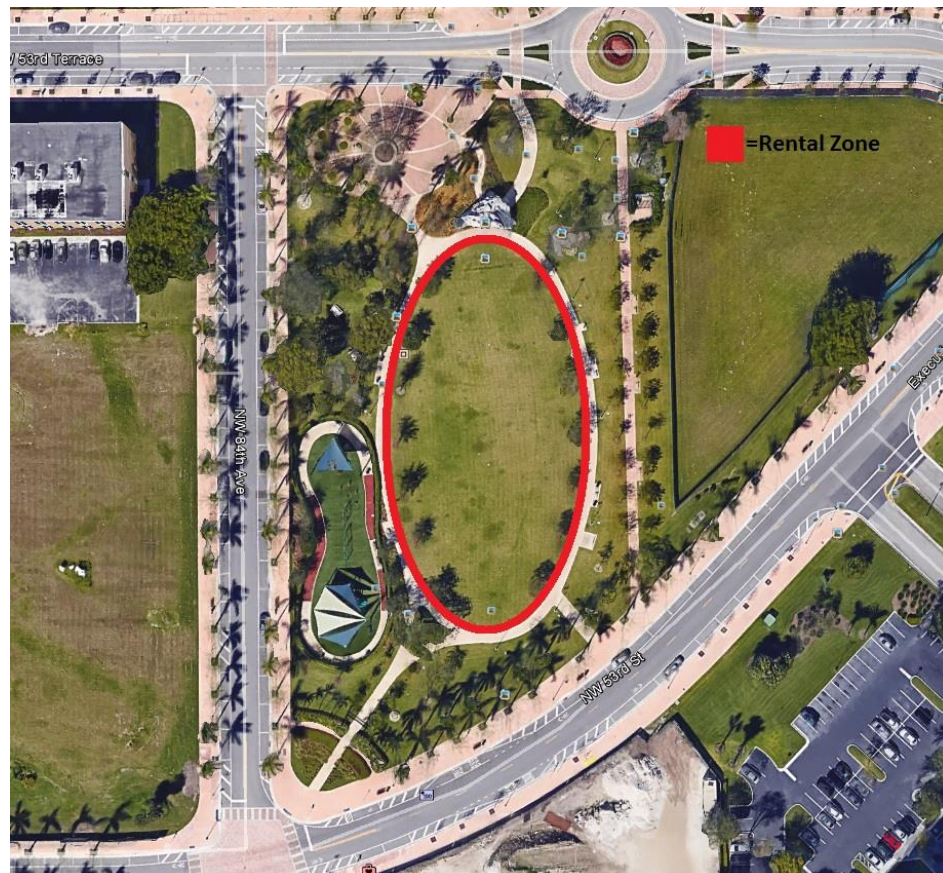


Downtown Doral Park Rentals

8395 NW 53rd Street

Doral, Florida 33166

- 500 person daily capacity.
- Event must obtain approval from the Downtown Doral Community Association Board of Directors.
- A parking agreement may be required for non-community-based events.
- Event must be family-friendly. *Family-friendly is defined as something to offer to family members of every age and to every type of family.*
- Vehicles cannot be driven into the facility to drop off supplies. Coordinator must transport supplies via hand truck or dolly.
- All proposed events must be requested at least three (3) months in advance.
- All of the parks amenities will remain open to public, regardless if they are attending the event or not.
- Structures cannot be staked down due to irrigation lines around the park.
- The use of outlets or any other source of power inside the park is prohibited. Organization must provide power for the event.
- Parking plan must be provided at the time of application submittal and is subject to approval by other departments/parties.
- Only one (1) event per month will be permitted.
- Commercial activities within the Downtown Doral Park are prohibited without prior approval of the Association, in its sole discretion, provided that temporary food vending carts at City-sponsored events and a monthly farmers market are expressly permitted.



Morgan Levy Park Rentals
5300 NW 102nd Avenue
Doral, Florida 33178

- 500 person daily capacity.
- Vehicles cannot be driven into the facility to drop off supplies. Coordinator must transport supplies via hand truck or dolly.
- All of the parks amenities will remain open to public, regardless if they are attending the event or not.
- Parking lot roads must remain free of obstructions (cars, supplies, etc.) in order to maintain the flow of traffic.
- Loading zones cannot be used as parking spots in case of an emergency.
- Structures cannot be staked down due to irrigation lines around the park.
- The use of outlets or any other source of power inside the park is prohibited. Organization must provide power for the event.

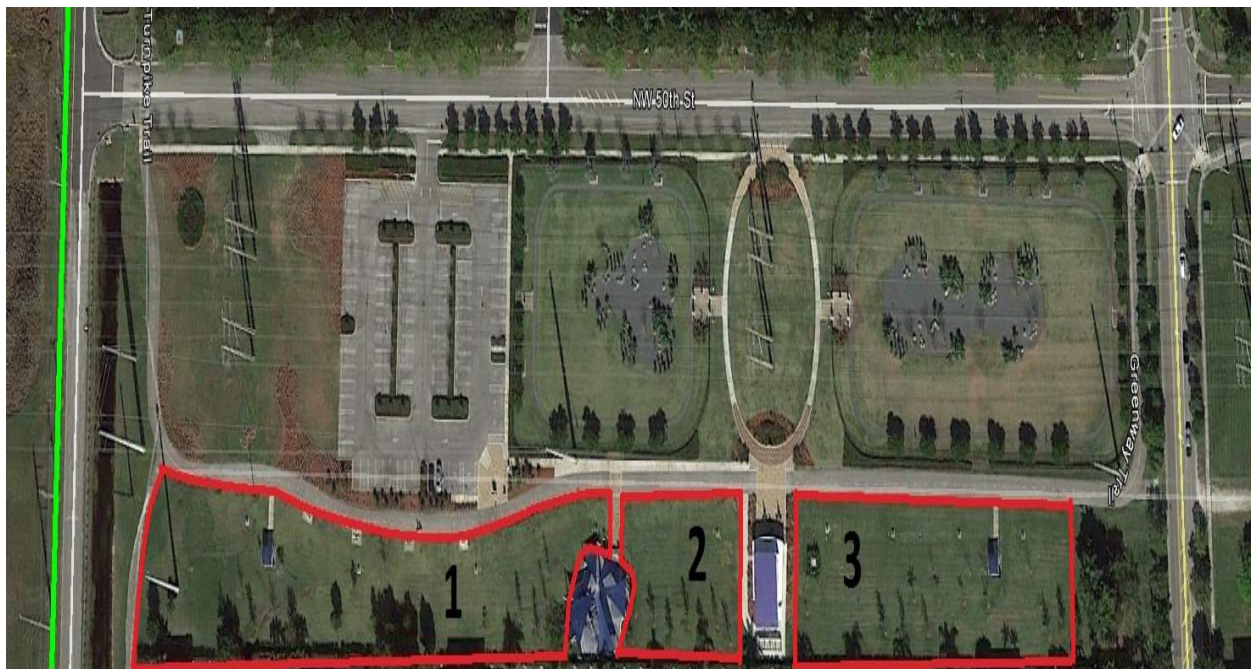


Trails and Tails Park Rentals

11645 NW 50th Street

Doral, Florida 33178

- 200 person daily capacity.
- Vehicles cannot be driven into the facility to drop off supplies. Coordinator must transport supplies via hand truck or dolly.
- All of the parks amenities will remain open to public, regardless if they are attending the event or not.
- Parking lot roads must remain free of obstructions (cars, supplies, etc.) in order to maintain the flow of traffic.
- Loading zones cannot be used as parking spots in case of an emergency.
- Structures cannot be staked down due to irrigation lines around the park.
- The use of outlets or any other source of power inside the park is prohibited. Organization must provide power for the event.
- No structure can exceed fourteen (14) feet in height.



Doral Legacy Park Rentals

11400 NW 82 Street

Doral, Florida 33178

- 500 person daily capacity.
- Vehicles cannot be driven into the facility to drop off supplies. Coordinator must transport supplies via hand truck or dolly.
- All of the parks amenities will remain open to public, regardless if they are attending the event or not.
- Parking lot roads must remain free of obstructions (cars, supplies, etc.) in order to maintain the flow of traffic.
- Loading zones cannot be used as parking spots in case of an emergency.
- Structures cannot be staked down due to irrigation lines around the park.
- The use of outlets or any other source of power inside the park is prohibited. Organization must provide power for the event.
-

