

WORK ORDER No. 2 FOR PROFESSIONAL SERVICES

TO: Marlin Engineering, Inc.
3363 W Commercial Boulevard,
Suite 115, Fort Lauderdale, Fl 33309
(954)-870-5070

DATE: July 9, 2024

The City of Doral authorizes the firm Marlin Engineering, Inc. to proceed with the professional engineering services for the design for Milling and Resurfacing and Pavement Markings at several locations. Where Marlin Engineering, Inc. is part of the pre-qualified pool of consultants selected in accordance with RFQ 2023-08 requirements and approved by the City Council on March 13, 2024, via Resolution 24-54. The work should be performed in accordance with the contract provisions contained in the Professional Services Agreement between Marlin Engineering, Inc. and the City of Doral dated June 3, 2024, and the attached Proposal submitted on June 14, 2024, submitted by your firm for the above referenced project.

SCOPE OF SERVICES AND SCEHDULE:

The scope of the project will be as described in the attached proposal from Marlin Engineering, Inc. Submitted on June 14, 2024. The schedule requires the work to be performed within 60 calendar days from Notice to Proceed. All limitations of time set forth in this Work Order are of the essence. The performance of services associated with this Work Order will be executed on a Time and Material basis based on the schedule of values submitted by Marlin Engineering, Inc. with a not to exceed amount of \$56, 838.90.

You are required by the Professional Services Agreement to begin work subsequent to the execution of this Work Order, or as directed otherwise. If you fail to begin work subsequent to the execution of this Work Order, the City of Doral will be entitled to disqualify the Proposal and revoke the award.

This Work Order incorporates the terms and conditions set forth in the Professional Services Agreement dated June 3, 2024, between the parties as though fully set forth herein. In the event that any terms or conditions of this Work Order conflict with the Continuing Services Agreement, the provisions of this specific Work Order shall prevail and apply. This Work Order is not binding until the City of Doral agrees and approves this Work Order.

IN WITNESS WHEREOF, the parties hereto have executed this Agreement on the day and date first above written, in two (2) counterparts, each of which shall, without proof or accounting for the other counterpart be deemed an original Contract.

CONSULTANT: MARLIN ENGINEERING, INC.

WITNESSES:

SEAL:

BY: *Ayced Freda*
NAME: Ayced Freda, PE
TITLE: Director of Business Development

1. *J. Padron*
2. _____

OWNER: CITY OF DORAL

AUTHENTICATION:

BY: *Rey Valdes*
NAME: Rey Valdes
TITLE: City Manager

BY: *Connie Diaz*
NAME: Connie Diaz
TITLE: City Clerk



APPROVED AS TO FORM AND LEGAL SUFFICIENCY FOR THE SOLE USE OF THE CITY OF DORAL:

BY: *Gastesi, Lopez and Mestre*
NAME: Gastesi, Lopez and Mestre, PLLC
TITLE: City Attorney

RESOLUTION No. 24-182

A RESOLUTION OF THE MAYOR AND THE CITY COUNCIL OF THE CITY OF DORAL, FLORIDA, APPROVING A WORK ORDER WITH MARLIN ENGINEERING INC. FOR THE PROVISION OF DESIGN AND PERMITTING SERVICES FOR MILLING AND RESURFACING AND PAVEMENT MARKINGS AT SEVERAL LOCATIONS, IN AN AMOUNT NOT TO EXCEED \$56,838.90, RECOGNIZING THAT MARLIN ENGINEERING, INC. IS A CITY OF DORAL PRE-QUALIFIED VENDOR; AUTHORIZING THE CITY MANAGER TO EXECUTE THE WORK ORDER AND EXPEND BUDGETED FUNDS ON BEHALF OF THE CITY; AND PROVIDING FOR AN EFFECTIVE DATE

WHEREAS, in April 2023 the Mayor and City Councilmembers adopted the latest Pavement Evaluation & Five-Year Maintenance and Rehabilitation Plan; and

WHEREAS, the Pavement Evaluation & Five-Year Maintenance and Rehabilitation Plan was able to evaluate and analyze the existing conditions of roadway and pavement markings within the City's maintained corridors to prioritize and schedule roadway rehabilitation and maintenance projects to extend the service life of the pavement and maximize use of available funds; and

WHEREAS the City of Doral Public Works Department (PWD) needs to secure a firm to provide design and permitting phase services for the Milling and resurfacing and Pavement Marking at several locations identified in the Plan; and

WHEREAS, the PWD requested a proposal from Marlin Engineering, Inc. (Marlin) to perform design and permitting phase services for the Milling & Resurfacing and Pavement Marking at several locations; and

WHEREAS, Marlin is a pre-qualified provider of professional engineering services selected in accordance with Consultant Competitive Negotiation Act (CCNA) requirements and approved by the City Council via Resolution No. 24-54; and

WHEREAS, PWD staff and Marlin negotiated the attached proposal in a not to exceed amount of Fifty Six Thousand, Eight Hundred Thirty Eight Dollars and 90/100 (\$56,838.90); and

WHEREAS, Marlin will develop the design plans and obtain all necessary permits and approvals for the project to move forward into construction phase; and

WHEREAS, the design services include topographical survey, utility coordination, development of construction plans, permitting with regulatory agencies, and other tasks as detailed on Marlin's proposal; and

WHEREAS, City staff respectfully requests that the City Council approve Work Order No. 2 for Marlin, a copy of which is attached hereto as Exhibit "A", for the provision of design and permitting services for the Milling and resurfacing and Pavement Marking at several locations; and an amount not to exceed \$56,838.90; and

WHEREAS, funding for this request is available from the Public Works Transportation Fund, "Construction in Progress" Account, Account Num. 101.80005.500650.

NOW, THEREFORE, BE IT RESOLVED BY THE MAYOR AND THE CITY COUNCIL OF THE CITY OF DORAL AS FOLLOWS:

Section 1. Recitals. The above recitals are confirmed, adopted, and incorporated herein and made part hereof by this reference.

Section 2. Approval. Work Order No. 2 for design and permitting for the Milling & Resurfacing and Pavement Marking at several locations; and an amount not to exceed \$56,838.90; a copy of which is attached hereto as Exhibit "A", together with such non-material changes as may be acceptable to the City Manager and approved as to form and legality by the City Attorney, is hereby approved.

Section 3. Authorization. The City Manager is authorized to execute the work order and expend budgeted funds on behalf of the City.

Section 4. Implementation. The City Manager and the City Attorney are hereby authorized to take such further action as may be necessary to implement the purpose and the provisions of this Resolution.

Section 5. Effective Date. This Resolution shall take effect immediately upon adoption.

The foregoing Resolution was offered by Councilmember Pineyro who moved its adoption. The motion was seconded by Vice Mayor Puig-Corve and upon being put to a vote, the vote was as follows:

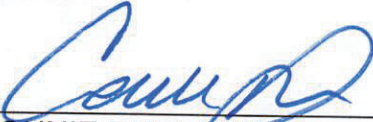
Mayor Christi Fraga	Yes
Vice Mayor Oscar Puig-Corve	Yes
Councilwoman Digna Cabral	Yes
Councilman Rafael Pineyro	Yes
Councilwoman Maureen Porras	Yes

PASSED AND ADOPTED this 14 day of August, 2024.



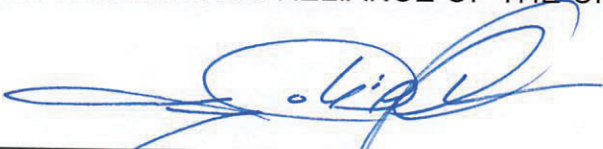
CHRISTI FRAGA, MAYOR

ATTEST:



CONNIE DIAZ, MMC
CITY CLERK

APPROVED AS TO FORM AND LEGAL SUFFICIENCY
FOR THE USE AND RELIANCE OF THE CITY OF DORAL ONLY:



LORENZO COBIELLA
GASTESI, LOPEZ & MESTRE, PLLC
CITY ATTORNEY

EXHIBIT “A”



June 14, 2024

Revision:

Julio Amoedo, MPA, GCC, CUC, GEC
Chief of Construction
City of Doral Public Works Department
8401 NW 53rd Terrace
Doral, FL 33166

Re: Professional Consulting Services for design services for Milling and Resurfacing and Pavement Markings at several locations

Dear Ms. Perez:

Marlin Engineering, Inc. proposes to provide engineering design, and preparation of construction documents, and contract documents, pursuant to the Continuing Professional Services Agreement provided by the City of Doral ("City") for Professional General Engineering and Architectural Services, RFQ 2023-08 dated April 4th, 2024.

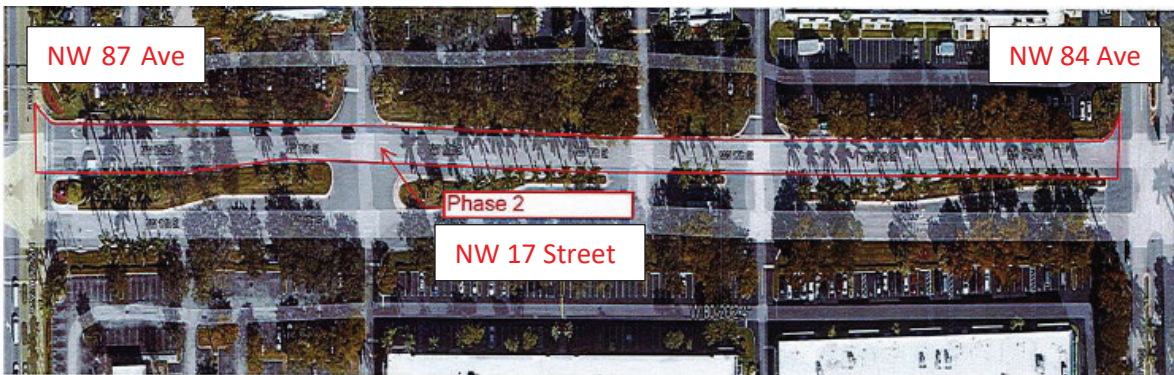
I. General

The scope of work consists of milling and resurfacing, pavement, and marking with no changes in the striping patterns within the designated areas. The locations and limits are specified below:

Location 1- NW 13th Terrace from 89th Court to 87th Ave: Corridor length 0.27 miles = 1425 feet



Location 2- NW 17 St from NW 87 Ave to NW 84 Ave: Corridor length 0.27 miles = 1425 feet





Location 3- NW 33 St from NW 107 Ave to NW 104 Ave: Corridor length 0.25 miles = 1320 feet



The scope of work outlines the effort required for the production of the construction documents by the City of Doral and Miami Dade County Standards and Specifications.

Scope of Services: The scope of work outlines the effort required for the production of the construction documents for the entire project.

Task 1- Pre-Design services

- 1.1 - Field Assessments-** A field review will be performed to confirm the data collected on existing features including, but not limited to, ADA ramps conditions, including a photo record and development of a survey at all locations from aerials.
- 1.2- Project General Tasks-** Project Management and coordination with the City of Doral and permitting agencies.

Task 2– Design Plans- For financial considerations, a set of design plans will be provided for each corridor.

- 2.1- Project General Tasks – 30% Plans-** Prepare preliminary design plans for the proposed improvements for review and comments by the City of Doral.
 - a) Prepare a complete contract set of smart plans consisting of:
 1. Key Sheet
 2. Summary of Pay Items
 3. General Notes
 4. Plan Sheets include Roadway and Signing and Pavement Markings
 5. Quantities
 - b) Permitting – Permit will be required from the Miami-Dade County Department of Transportation and Public Works (DTPW) traffic division. Permitting fees are not included in this proposal and are the responsibility of the city.
 - c) Construction Cost Estimate – Prepare a construction cost estimate to be included with the 30% and 100% submittal documents.
 - d) Quality Control and Peer Review – Perform quality control and peer review of contract documents. If requested by the City of Doral, a copy of the marked-up set of plans and/or specifications will be provided showing the consultant’s QC review on each scheduled deliverable. The submittals shall include the name of the consultant staff that performed the QC review for each component.



The plans will outline the following improvements: asphalt milling and resurfacing (as per Pavement design from the city), and pavement markings as required. No road reconstruction is included in this proposal.

- Deliverables for this Task will include:
- 30% Construction Plans Package (11"x 17")
 - 30% Engineer's Construction Estimate

Task 2.2- 100% Plans-

- a) Incorporate the review comments from 30% of plan submissions into 100% of plans.
- b) Submit the 100% plans for City review. Once all comments are addressed, or if no comments or corrections are necessary, submit the final signed and sealed construction documents and specifications to the city.

Deliverables for this Task will include:

- 100% construction documents.
- Final signed and sealed construction documents.
- Updated construction cost estimate.

Schedule of Work – Time of Performance

The anticipated length of services for tasks 1- 2 commencing after the Notice to Proceed. MARLIN shall submit the Deliverables and perform the Work as depicted in the tables below.

Task or Activity ID#	Major Task, Sub-Task, Activity, or Deliverables	Anticipated Delivery Date
1	Pre-Design Service	NTP + 1 week
2.1	30% Plans	NTP + 8 weeks
	Review by the City	NTP + 9 weeks
2.2	100% Plans include a review by DTPW	NTP + 17 weeks

MARLIN will provide the City with the Services defined in the Scope section above. The anticipated Notice to Proceed for these Services is TBD.

II. Compensation

Consultant shall perform the work detailed in this Proposal for a Total fee of \$ 56,838.90. The City shall not be liable for any fee, cost, expense or reimbursable expense, or other compensation beyond this amount unless approved in a supplemental work order.

SUMMARY OF COMPENSATION			
Task or Activity ID #	Task Name and/or Activity Description	Fee Amount	Fee Basis
1.1	Field Assessment/Development of Survey	\$9,084.60	Time & Material/Not to Exceed
1,2	Project Management	\$5,399.90	Time & Material/Not to Exceed



2.1	30% Plans/Permitting	\$13,377.52	Time & Material/Not to Exceed
2.2	100% Plans/Permitting	\$28,976.84	Time & Material/Not to Exceed
	Total	\$56,838.90	

- **Exclusions from Basic Services-** Utility Investigation (SUE), Survey, Geotech, and Post Design

III. Additional Services

Additional services and unforeseen circumstances beyond the established scope shall be negotiated in good faith and at the sole discretion of the City.

IV. City Furnished Documents & Data

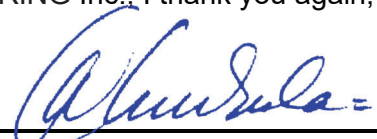
The following information or documents are to be provided by the City, if available: As-built information

V. Project Manager

Consultant's Project Manager for this Project will be Ms. Aysel Freda, P.E.

Marlin Engineering Inc. appreciates the opportunity to submit this scope and Fee Estimate and we look forward to being of service. If you have any questions concerning this proposal, do not hesitate to contact us. On behalf of MARLIN ENGINEERING Inc., I thank you again, for the opportunity with you on this important project.

Submitted by:



Aysel Freda, P.E.
 Director of Business
 Development
 Marlin Engineering, Inc

Reviewed and approved in concept recommended by:

 Julio Amoedo P.E- Chief of Construction

CITY OF SOUTH MIAMI

Consultant Fee Proposal Worksheet

Consultant Name: Marlin Engineering, Inc.

Contract No.:

Date: 6/14/2024

Work Order No:

Project: Several locations

Project No.:

Description: Milling and Resurfacing, New Pavement Markings

STAFF CLASSIFICATION

Job Classification Assigned Staff Approved Rate	Project Manager		Senior Engineer		Project Engineer		CADD Technician								Staff Hours By Task	Salary Cost By Task	Average Rate Per Task
	Rate: \$257.80	Rate: \$238.40	Rate: \$199.85	Rate: \$125.15	Rate:	Rate:	Rate:	Man hours	Cost/ Task	Man hours	Cost/ Task	Man hours	Cost/ Task				
Task	Man hours	Cost/ Task	Man hours	Cost/ Task	Man hours	Cost/ Task	Man hours	Cost/ Task	Man hours	Cost/ Task	Man hours	Cost/ Task	Man hours	Cost/ Task	Task	Task	Task
1 Field Assessment / Development of Survey	3	\$773	12	\$2,861	16	\$3,198	18	\$2,253							49	\$9,085	\$185.40
2 Project Management	8	\$2,062	14	\$3,338											22	\$5,400	\$245.45
3 Plans- 30%	6	\$1,547	6	\$1,430	32	\$6,395	32	\$4,005							76	\$13,377	\$176.02
4 Plans- 100%	6	\$1,547	6	\$1,430	80	\$15,988	80	\$10,012							172	\$28,977	\$168.47
5																	
6																	
7																	
9																	
10																	
11																	
12																	
13																	
14																	
15																	
16																	
17																	
18																	
19																	
20																	
21																	
22																	
23																	
24																	
25																	
26																	
27																	
Total Staff Hours	23		38		128		130								319		
Total Staff Cost		\$5,929.40		\$9,059.20		\$25,580.80		\$16,269.50								\$56,838.90	\$178.18

Total % of Work by Position 7.2% 11.9% 40.1% 40.8%

Note: Fee for the Principal(s) of the firm are not to be included above as the multiplier is not applicable to their hours. The fee is to be shown below and entered as a separate

Estimate of Principal's Fee
 _____ Total hours _____ / hour = \$ _____

- Notes:
- This sheet is to be used by Prime Consultant to calculate the Grand Total Fee and one is to be used for each Subconsultant
 - Manually enter fee from each subconsultant. Unused subconsultant rows may be hidden
 - Where applicable the basis for work activity descriptions shall be the FICE/FDOT Standard Scope and Staff Hour Estimation Handbook.
 - Enter the multiplier value in the field after the word "multiplier" Maximum of 2 decimal points.

1 - SUBTOTAL ESTIMATED FEE: multiplier 1.00

additional Services (Alic
 Survey Fee (or Survey t
 Subconsultant:
 Subconsultant:
 Principal's Fee

2 - SUBTOTAL ESTIMATED FEE:

Other Misc. Fee: Enter Fee Description

3 - SUBTOTAL ESTIMATED FEE:

Additional Services (Allowance)
 Reimbursables (Allowance)

GRAND TOTAL ESTIMATED FEE:

\$56,838.90
\$ -
\$56,838.90
\$56,838.90
\$56,838.90